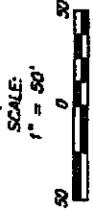


PRELIMINARY PLAN

DATE 6-26-09



Cox Machine 3rd Addition

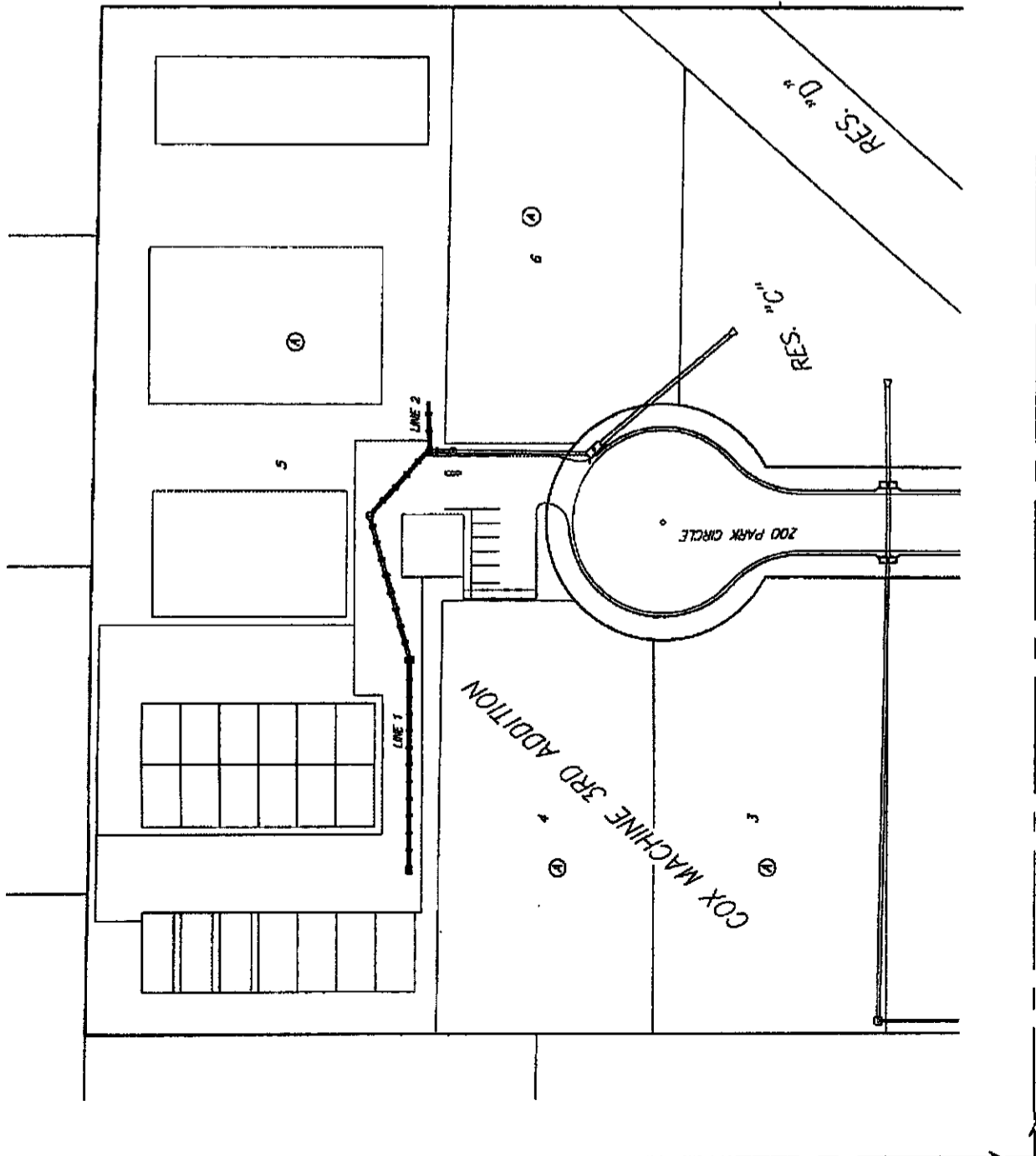
LOT 5, BLOCK A

Private Project Number: PPS (607861)

CITY OF WICHITA, KANSAS

James Armour, P.E. City Engineer

June 2009



Bench Marks

Site Bench Mark
Northeast Property Corner Iron.
Elev. = 1326.15

Index

	1	2	3
Title Sheet	Available On Request	Available On Request	Available On Request
Plan/Profile Sheet	Available On Request	Available On Request	Available On Request
Copy of Plot	Available On Request	Available On Request	Available On Request
Mainframe Detail	Available On Request	Available On Request	Available On Request
Ring & Cover Details	Available On Request	Available On Request	Available On Request
Inlet Detail	Available On Request	Available On Request	Available On Request
BMP Erosion Details	Available On Request	Available On Request	Available On Request

Legal Description

Lot 5, Block A, Cox Machine 3rd Addition,
Wichita, Sedgwick County, Kansas

HOOVER

APPROVED AS NOTED
BY CITY ENGINEER OF WICHITA

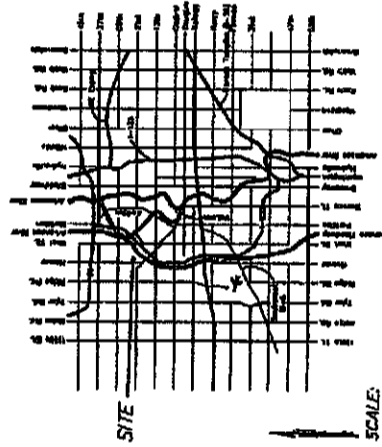
Storm Sewers

NOTE TO CONTRACTORS

Institutions, inspection and testing for this project is to be provided by a Licensed Consulting Engineering firm under contract with the Owner/Developer. Said inspection to be in accordance with the City of Wichita standard construction engineering practices and certified by a Licensed Professional Engineer. No work shall be performed in dedicated stormwater or public right-of-way by the Contractor without such inspection nor shall any work be commenced without written authorization by the City Engineer. All Construction and Materials shall comply with the City of Wichita Specifications and Standards (on file and available in the City Engineer's Office).

General Notes

- Contractor will be required to provide notice to utility companies a minimum of forty-eight (48) hours prior to any excavation, as follows:
Kansas One-Call 687-2470
City of Wichita 262-4270
City of Wichita Sewer Dept. (Water) 262-6000
City of Wichita Storm Sewer Maint. 262-6000
City of Wichita Traffic Maint. 262-6034
- All disturbed R/W areas not included for pavement or sidewalk construction shall be seeded with Kansas Premium Fescue Blend at a rate of 8 lb./1000 Sq. Ft., fertilized with a 16-20-6 ratio at a rate of 4 lb./1000 Sq. Ft., and mulched with Prairie Hay at a rate of 92 lb./1000 Sq. Ft. Mulch shall be packed with forks or punched into soil to reduce loss due to wind.
- Utility service lines, poles, valve boxes, meters, etc., shall be adjusted as necessary by others prior to construction unless the plans specifically call for the plans specifically identify a utility, it shall be adjusted by its owner during construction. Existing utilities and their location, as shown on the plans represent the best information obtainable for design and shall be field verified. The contractor will be required to work around existing utilities within the right-of-way which do not conflict with proposed construction.
- All storm sewers and appurtenances shall be installed in accordance with the most recent edition of City of Wichita, Kansas Standard Specifications for the Construction of City Projects.
- Contractor shall furnish the inspector with a copy of the manufacturer's certification for any pipe used on this project after completion of pipe installation. The engineer will not certify the project to the city until pipe certification has been received.
- Contractor shall not start work on the project until the project inspector is assigned to the project and is present on the site. Contractor shall not start on the project until all necessary bonds and permits have been obtained. Bonds may include but are not limited to Statutory Performance & Maintenance for areas in public right-of-way and easement. For projects within the City of Wichita contact Tom Mason (262-4574). Any work done without inspection will be required to be uncovered for inspection.
- Rubble from the removal of miscellaneous structures and excess excavation which is to be wasted shall be disposed of on sites to be provided by the Contractor. These sites shall be approved by the Engineer as to suitability, appearance and site location. Locations that, in the opinion of the Engineer, will leave an unsightly appearance will not be approved. All disposal sites must be approved by the Kansas Department of Health and Environment. Material either stockpiled or disposed of in a flood plain would require a Kansas State Board of Agriculture permit. Any material dumped in waters of the United States or wetlands is subject to U.S. Corps of Engineers or permitting regulations. Any material buried or stockpiled beyond approved construction limits would require additional archeological investigations unless buried in a previously approved borrow location.



VICINITY MAP

Baughman
Baughman Company, P.A. 375 E. 9th St., Wichita, KS 67211 716.262.2321 FAX 716.262.2324
ENGINEERING | SURVEYING | PLANNING | LANDSCAPE ARCHITECTURE