

TERRADYNE WEST

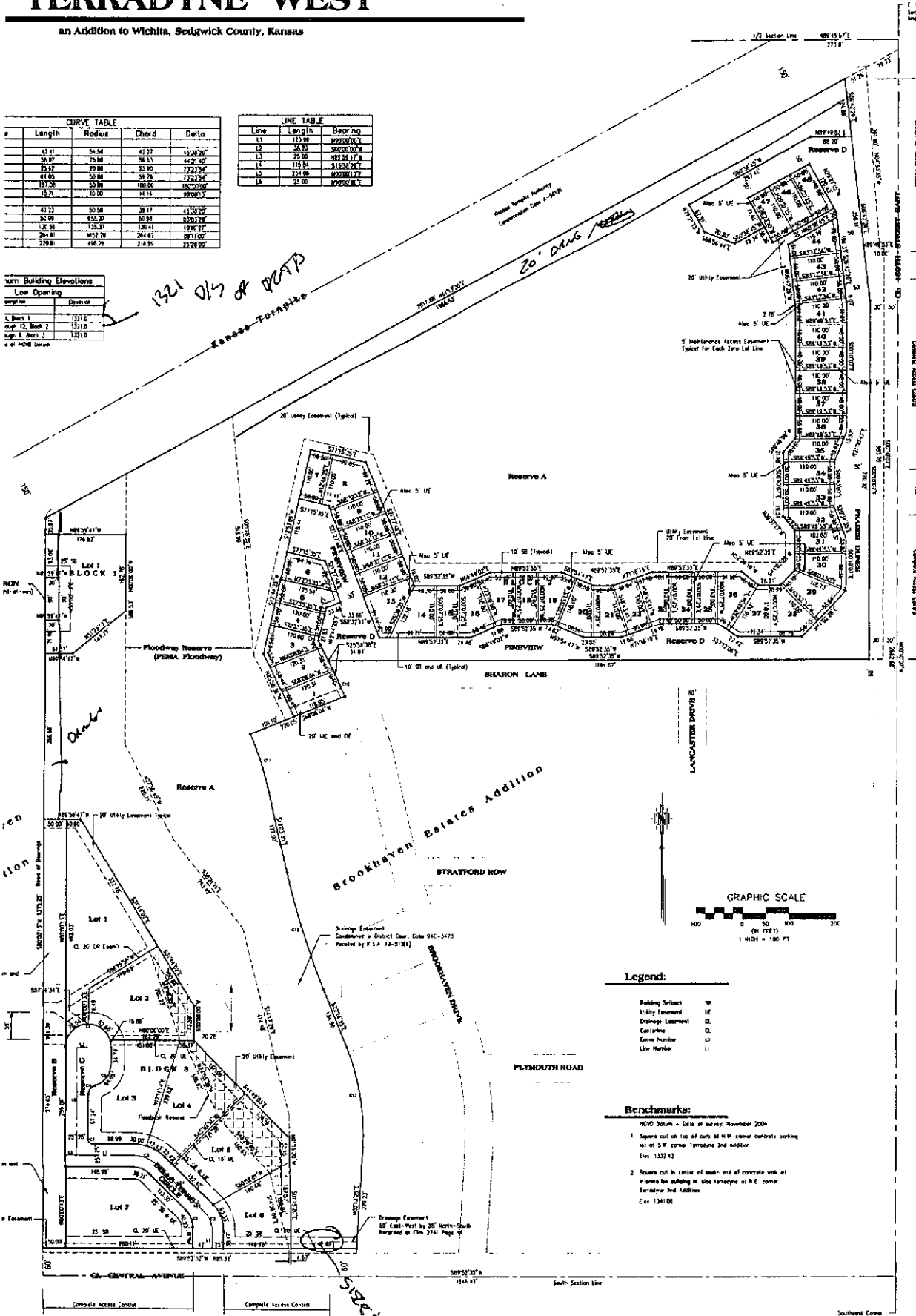
an Addition to Wichita, Sedgwick County, Kansas

Length	Radius	Chord	Delta
43.41	54.50	41.77	55.28°
50.07	75.00	54.53	44.26°
75.12	70.00	51.90	77.23°
41.50	50.00	38.78	102.00°
157.09	50.00	100.20	102.00°
15.71	10.00	14.14	90.00°
45.77	50.50	39.17	41.26°
50.99	85.37	50.84	33.01°
120.38	135.37	120.41	19.16°
78.85	162.78	204.41	29.16°
120.38	198.78	218.90	22.90°

Line	Length	Bearing
L1	112.89	S89°00'00"W
L2	34.23	S00°00'00"W
L3	75.50	S81°34'17"W
L4	103.96	S15°32'26"E
L5	124.68	S02°30'17"E
L6	51.00	S02°00'00"E

Low Opening	Elevation
1. Block 1	1311.0
2. Block 2	1311.0
3. Block 3	1311.0

1321 013 of 024P



- Legend:**
- Building Setback SE
 - Utility Easement UE
 - Drainage Easement DE
 - Carriageway CL
 - Curve Center CC
 - Lot Number LI

- Benchmarks:**
- 1. Square cut on top of curb at N.W. corner controls parking lot at S.W. corner Terrace 2nd Addition Elev 1331.42
 - 2. Square cut in center of south end of concrete walk at intersection building to site terradyne at N.E. corner Terradyne 2nd Addition Elev 1341.00