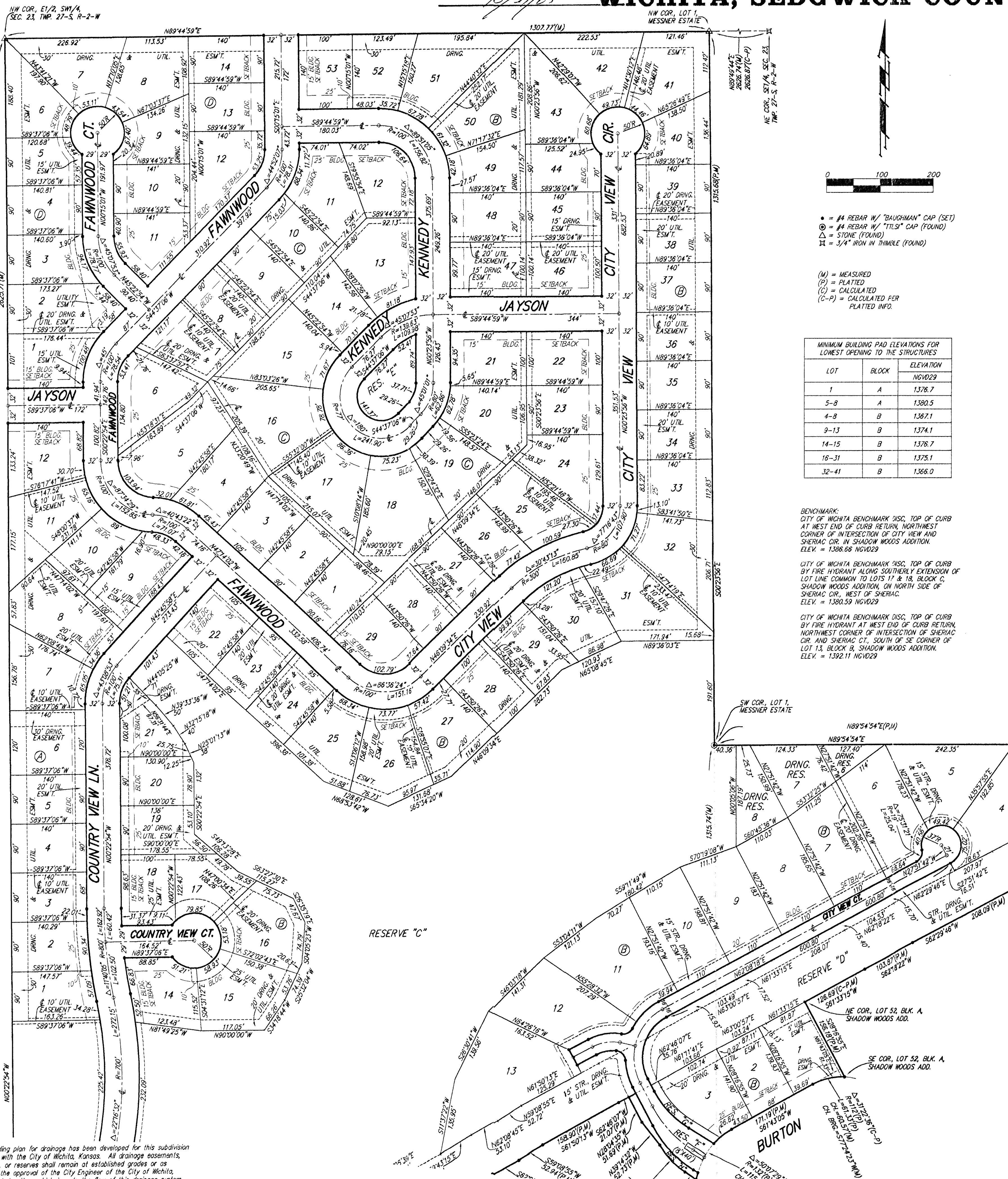


FINAL TRACING RECORD THE WOODS ADDITION WICHITA, SEDGWICK COUNTY, KANSAS



State of Kansas) SS We, Baughman Company, P.A., Surveyors in Sedgwick County and state do hereby certify that we have surveyed and platted "THE WOODS ADDITION", Wichita, Sedgwick County, Kansas and that the accompanying plat is a true and correct exhibit of the property surveyed, described as a replat of all of Lots 52, 53, and 54, Block A, Shadow Woods Addition, Wichita, Sedgwick County, Kansas, together with all of Reserve "L" in said Shadow Woods Addition, together with that part of Reserve "7" in said Shadow Woods Addition lying northwesterly of the following described line: Beginning at the most easterly NE corner of Lot 18, Block B, in said Shadow Woods Addition; thence S57°32'53"E, 15.93 feet to a point on the east line of said Reserve "7", and there ending, together with that part of City View as dedicated in said Shadow Woods Addition lying northwesterly of the following described line: Beginning at the SW corner of Lot 54 in said Block A; thence southwesterly along the extended south line of said Lot 54, being a curve to the left, having a central angle of 280°3'4" and a radius of 132.00 feet, an arc distance of 64.64 feet, (having a chord length of 64.00 feet bearing S32°27'07"W), to a deflection corner in the east line of said Reserve "7", and there ending, TOGETHER with that part of the SE 1/2 of the SE 1/4 of Sec. 23, Twp. 27-S, R-2-W of the 6th P.M., Sedgwick County, Kansas lying northwesterly of the northwest line of said Shadow Woods Addition, and TOGETHER with the E 1/2 of the SW 1/4 of said Sec. 23, (including Country View Lane as dedicated in The Woods Reserve, Wichita, Sedgwick County, Kansas), except that part of the E 1/2 of said SW 1/4 that part as said Shadow Woods Addition as cited above, and except Reserve "A" and Reserve "B", in said The Woods Reserve, all being subject to road rights-of-way on the south.

- = #4 REBAR W/ "BAUGHMAN" CAP (SET)
- = #4 REBAR W/ "TITUS" CAP (FOUND)
- = STONE (FOUND)
- = 3/4" IRON IN TRIMBLE (FOUND)
- (M) = MEASURED
- (P) = PLATTED
- (C) = CALCULATED
- (C-P) = CALCULATED PER PLATTED INFO.

LOT	BLOCK	ELEVATION NGVD29
1	A	1376.7
5-8	A	1380.5
4-8	B	1371.1
9-13	B	1374.1
14-15	B	1376.7
16-31	B	1375.1
32-41	B	1366.0

BENCHMARK: CITY OF WICHITA BENCHMARK DISC, TOP OF CURB AT WEST END OF CURB RETURN, NORTHWEST CORNER OF INTERSECTION OF CITY VIEW AND SHERIAD CIR. IN SHADOW WOODS ADDITION. ELEV. = 1368.68 NGVD29

CITY OF WICHITA BENCHMARK DISC, TOP OF CURB BY FIRE HYDRANT ALONG SOUTHERLY EXTENSION OF LOT LINE COMMON TO LOTS 17 & 18, BLOCK C, SHADOW WOODS ADDITION, ON NORTH SIDE OF SHERIAD CIR., WEST OF SHERIAD. ELEV. = 1360.59 NGVD29

CITY OF WICHITA BENCHMARK DISC, TOP OF CURB BY FIRE HYDRANT AT WEST END OF CURB RETURN, NORTHWEST CORNER OF INTERSECTION OF SHERIAD CIR. AND SHERIAD CT., SOUTH OF SE CORNER OF LOT 13, BLOCK B, SHADOW WOODS ADDITION. ELEV. = 1392.11 NGVD29

All being situated in the SE 1/4 and the SW 1/4 of Sec. 23, Twp. 27-S, R-2-W of the 6th P.M., Sedgwick County, Kansas

Existing public easements and dedications being vacated by virtue of K.S.A. 12-512(b).

Baughman Company, P.A.

 Michael G. Conrey, Surveyor

Know all men by these presents that we, the undersigned, have caused the land in the surveyors certificate to be platted into Lots, Blocks, Streets, and Reserves, to be known as "THE WOODS ADDITION", Wichita, Sedgwick County, Kansas. The utility easements are hereby granted as indicated for the construction and maintenance of all public utilities. The drainage and utility easements are hereby granted as indicated for drainage purposes and for the construction and maintenance of all public utilities. The drainage easements are hereby granted as indicated for drainage purposes. The streets are hereby dedicated to and for the use of the public. Reserves "A" and "F" are hereby reserved for open space, landscaping, streets, entry monuments, and utilities. Reserve "B" is hereby reserved for open space, landscaping, berms, entry monuments, lakes, drainage purposes, recreation areas, sidewalks, utilities as confined to easements, pipelines as confined to easement, and a public bike path. Reserve "C" is hereby reserved for open space, landscaping, berms, entry monuments, lakes, drainage purposes, recreation areas, sidewalks, utilities as confined to easements, streets as confined to easement, pipelines as confined to easement, and a public bike path. The homeowners association for the addition hereby acknowledges that the City of Wichita has the right to construct and maintain a public bike path in said Reserves "B" and "C". The homeowners association for the addition shall have the final right of approval of the location and route of said public bike path. Reserve "D" is hereby reserved for open space, streets as confined to easement, drainage purposes, utilities as confined to easements, and pipelines as confined to easement. Reserve "E" is hereby reserved for open space, landscaping, recreation areas, and drainage purposes. Reserves "G", "H", and "I" are hereby reserved for open space, landscaping, berms, drainage purposes, and utilities. Drainage Reserves "6", "7", and "8" are hereby reserved for open space, landscaping, and drainage purposes. Reserves "A", "B", "C", "D", "E", "F", "G", and "H" shall be owned and maintained by the homeowners association for the addition. Drainage Reserves "6", "7", and "8" shall be owned and maintained by their corresponding adjacent Lots. Access controls shall be as depicted on the face of the plat and are hereby granted to the City of Wichita, Kansas. The Minimum Building Pad Elevations for the lowest opening to the structures shall be as indicated on the face of the plat.

Maple Group, L.L.C., a Kansas limited liability company

 Jay W. Russell, Member

This plat of "THE WOODS ADDITION", Wichita, Sedgwick County, Kansas has been submitted to and approved by the Wichita-Sedgwick County Metropolitan Area Planning Commission, Wichita, Kansas.
 Dated this _____ day of _____, 2005.
 Wichita-Sedgwick County Metropolitan Area Planning Commission

_____, Chair
 Morris K. Dunlap

_____, Secretary
 John L. Schlegel

This plat approved and all dedications shown hereon accepted by the City Council of the City of Wichita, Kansas, this _____ day of _____, 2005.

_____, Mayor
 Carlos Mayans

_____, City Clerk
 Karen Sublett

Reviewed in accordance with K.S.A. 58-2005 on this _____ day of _____, 2005.

_____, Deputy County Surveyor
 Tricia L. Robella, L.S. #1246
 Sedgwick County, Kansas

Entered on transfer record this _____ day of _____, 2005.

_____, County Clerk
 Don Brace

State of Kansas) SS This is to certify that this plat has been filed for record in the office of the Register of Deeds, this _____ day of _____, 2005 at _____ o'clock _____ M.; and is duly recorded.

_____, Register of Deeds
 Bill Meek

_____, Deputy
 Tonya Buckingham

We the undersigned holders of a mortgage on the above described property, do hereby consent to this plat of "THE WOODS ADDITION", Wichita, Sedgwick County, Kansas.
 Kanza Bank

JAMES D. ASHCRAFT, Sr. V.P. (Title)

State of Kansas) SS The foregoing instrument acknowledged before me, this 21st day of October, 2005, by James D. Ashcraft, SR Vice President of Kanza Bank, on behalf of the bank.

JACQUELINE C. NEAL, Notary Public

My App't. Exp. 2/14/2009

State of Kansas) SS The foregoing instrument acknowledged before me, this 20th day of October, 2005, by Jay W. Russell, Member of Maple Group, L.L.C., a Kansas limited liability company, on behalf of the limited liability company.

My App't. Exp. 11-7-05

JUDITH M. TERHUNE, Notary Public