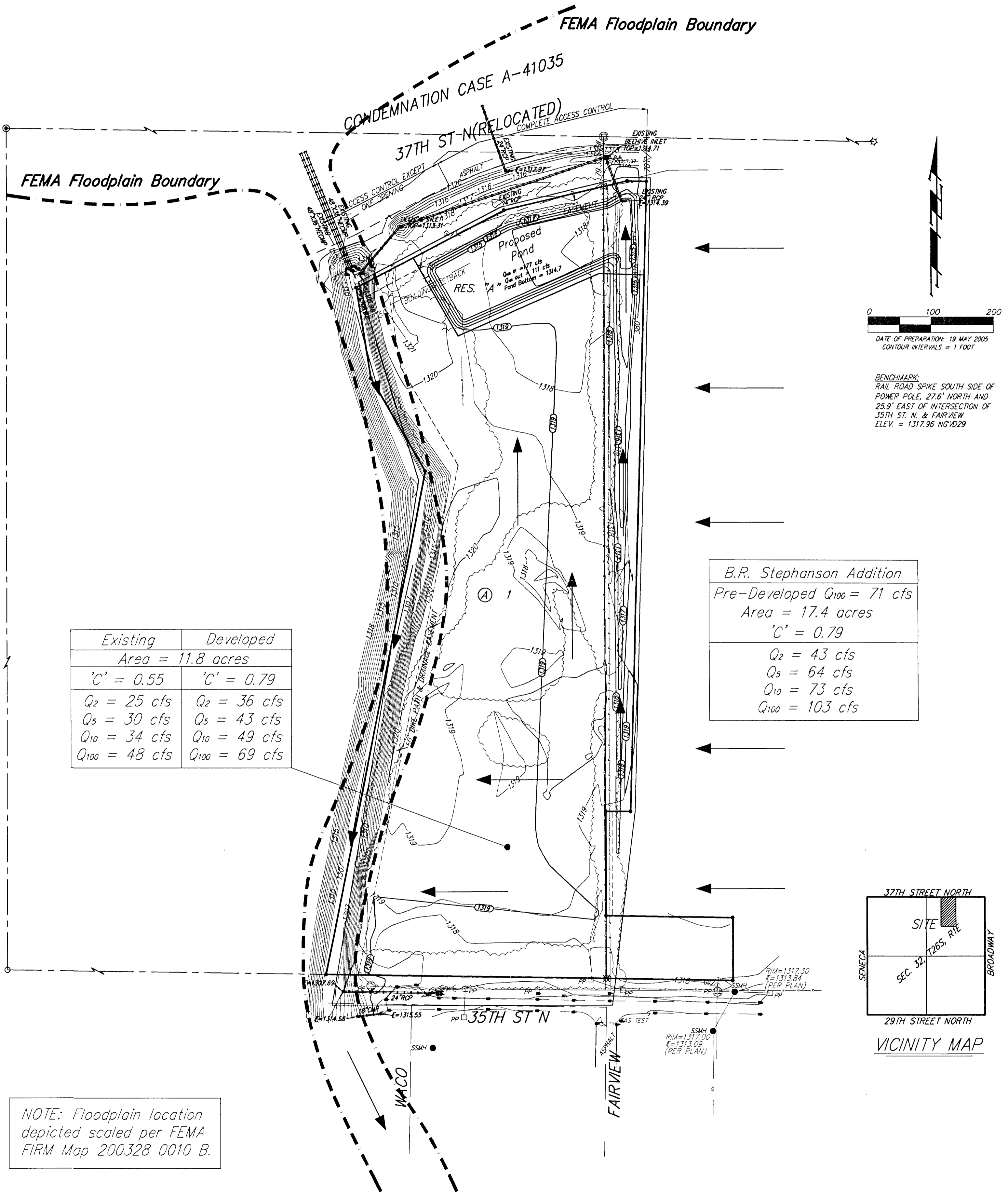


DRAINAGE PLAN

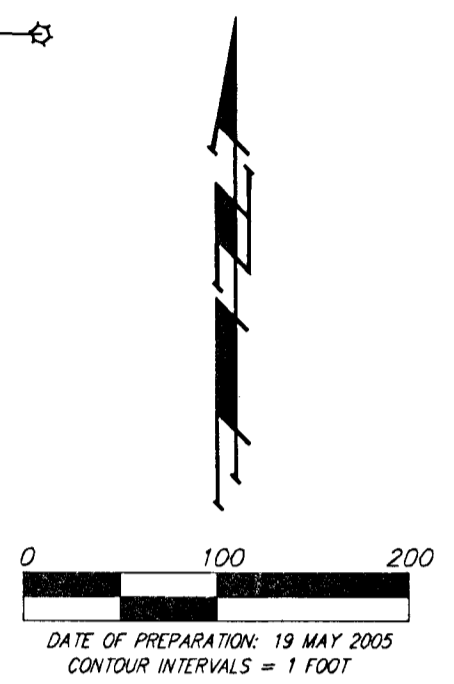
WICHITA CONCRETE PIPE ADDITION

WICHITA, SEDGWICK COUNTY, KANSAS

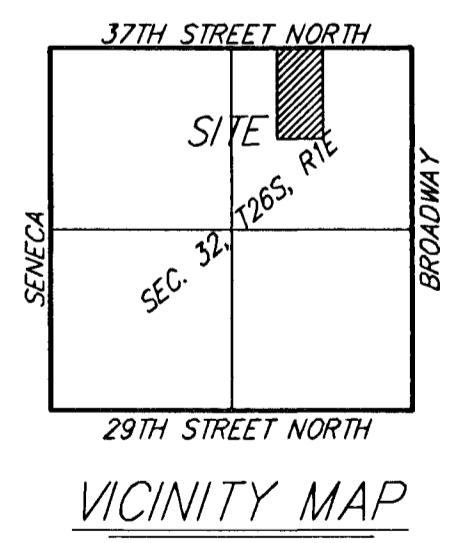


Existing	Developed
Area = 11.8 acres	
'C' = 0.55	'C' = 0.79
Q ₂ = 25 cfs	Q ₂ = 36 cfs
Q ₅ = 30 cfs	Q ₅ = 43 cfs
Q ₁₀ = 34 cfs	Q ₁₀ = 49 cfs
Q ₁₀₀ = 48 cfs	Q ₁₀₀ = 69 cfs

B.R. Stephanson Addition	
Pre-Developed Q ₁₀₀ = 71 cfs	
Area = 17.4 acres	
'C' = 0.79	
Q ₂ = 43 cfs	
Q ₅ = 64 cfs	
Q ₁₀ = 73 cfs	
Q ₁₀₀ = 103 cfs	



BENCHMARK:
RAIL ROAD SPIKE SOUTH SIDE OF
POWER POLE, 27.8' NORTH AND
25.9' EAST OF INTERSECTION OF
35TH ST. N. & FAIRVIEW
ELEV. = 1317.96 NGVD29



NOTE: Floodplain location depicted scaled per FEMA FIRM Map 200328 0010 B.

NOTE: BFE of 1316.29 and Observed HW of 1308.71 at 33rd Street per Cook, Flatt, & Strobel Engineers design plan for KDOT bridge 33rd Street North over West Drain.

REVISED 25 JULY 2005
19 MAY 2005