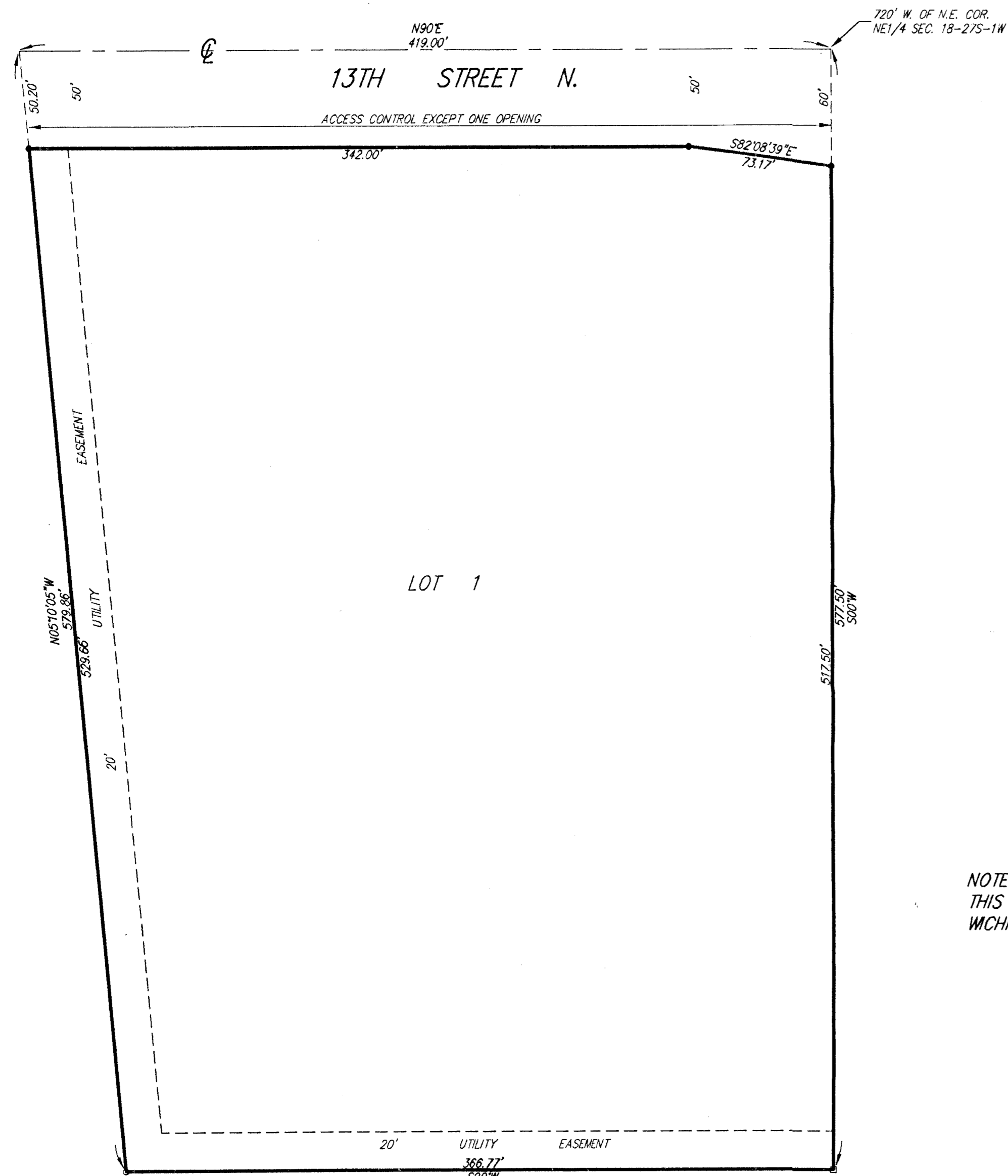


WICHITA RETIREMENT RESIDENCE ADDITION

WICHITA, SEDGWICK COUNTY, KANSAS

LIBRARY COPY
SEDGWICK COUNTY, KANSAS
REGISTER OF DEEDS



NOTE:
THIS PLAT IS SUBJECT TO THE CONDITIONS OF THE
WICHITA RETIREMENT RESIDENCE P.U.D., (P.U.D.-10)

State of Kansas)
Sedgwick County) SS

We, Savoy, Ruggles & Bohm, P.A., Surveyors in aforesaid county and state do hereby certify that, under the supervision of the undersigned, we have surveyed and platted "WICHITA RETIREMENT RESIDENCE ADDITION", Wichita, Sedgwick County, Kansas and that the accompanying plat is a true and correct exhibit of the property surveyed, described as follows:

The north 35 rods of the east 68 3/4 rods of the Northeast Quarter of Section 18, Township 27 South, Range 1 West of the Sixth Principal Meridian, Sedgwick County, Kansas, except that part platted as Brandt Commercial Addition, Wichita, Sedgwick County, Kansas.

All Public easements and dedications being vacated by virtue of K.S.A. 12-512(b).

Date 22 November 1999, Mark A. Savoy RLS #788
Surveyor
Savoy, Ruggles & Bohm, P.A.

Know all men by these presents that we, the undersigned, have caused the land described in the surveyors certificate to be platted into a Lot to be known as "WICHITA RETIREMENT RESIDENCE ADDITION", Wichita, Sedgwick County, Kansas. The Street is hereby dedicated to and for the use of the public. The utility easements are hereby granted as indicated for the construction and maintenance of all public utilities. All abutter's rights of access to or from 13th Street North over and across the north line of Lot 1 are hereby granted to the City of Wichita, provided, however, that Lot 1 shall have access to 13th Street North at one location as shall be approved by the City Engineer for the City of Wichita, Kansas. A drainage plan has been developed for this plat and all drainage easements, and rights-of-way shall remain at established grades or as modified with the approval of the City Engineer, and unobstructed to allow for the conveyance of stormwater.

William E. Colson Managing General Partner
William E. Colson
Colson & Colson Construction Co.

State of Oregon)
County of Marion) SS

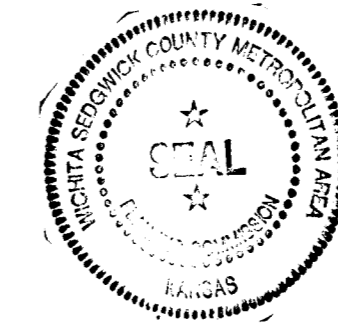
The foregoing instrument acknowledged before me, this 19th day of November 1999, by William E. Colson, Managing General Partner, on behalf of Colson & Colson Construction Co.

Pat Kathanahy Notary Public
My App't. Exp. 6-27-03



This plat of "WICHITA RETIREMENT RESIDENCE ADDITION", Wichita, Sedgwick County, Kansas, has been submitted to and approved by the Wichita-Sedgwick County Metropolitan Area Planning Commission, Wichita, Kansas.
Dated this 24th day of August, 1999.

Wichita-Sedgwick County Metropolitan Area Planning Commission



William M. Johnson Chairman
Marvin S. Krout Secretary

This plat approved and all dedications shown hereon, accepted by the City Council of the City of Wichita, Kansas, this 17th day of December, 1999.

Bob Knight Mayor
Pat Burnett City Clerk



Reviewed in accordance with K.S.A. 58-2005 on this 30th day of November, 1999.

Tricia L. Robello Deputy County Surveyor
Tricia L. Robello, LS #1246

State of Kansas)
Sedgwick County) SS

This is to certify that this plat has been filed for record in the office of the Register of Deeds, this 17th day of December, 1999, at 1:15 o'clock P.M. and is duly recorded.

Bill Meek Register of Deeds
Linda Rizzure Deputy

Entered on transfer record this 17th day of December, 1999.



James Allford County Clerk

SRB 924 NORTH MAIN 318-264-8008
WICHITA, KANSAS 67203 FAX 264-4821
http://www.feist.com/~srb E-mail: srb@feist.com
SAVOY, RUGGLES & BOHM, P.A.
ENGINEERING & SURVEYING

DWG FILE: 014209F-8.C
PROJECT NO. 99001402