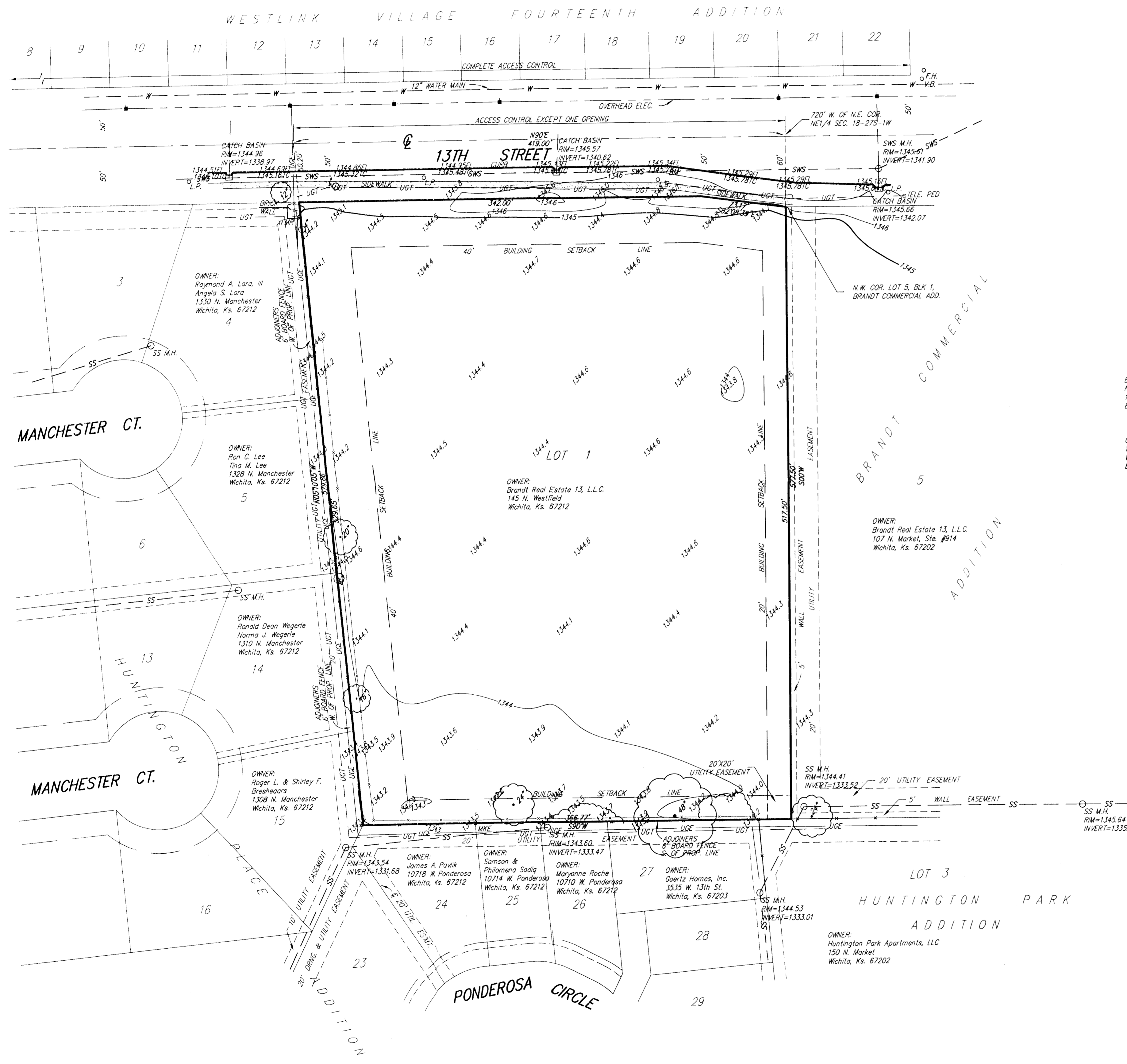


SKETCH PLAT WICHITA RETIREMENT RESIDENCE ADDITION

WICHITA, SEDGWICK COUNTY, KANSAS



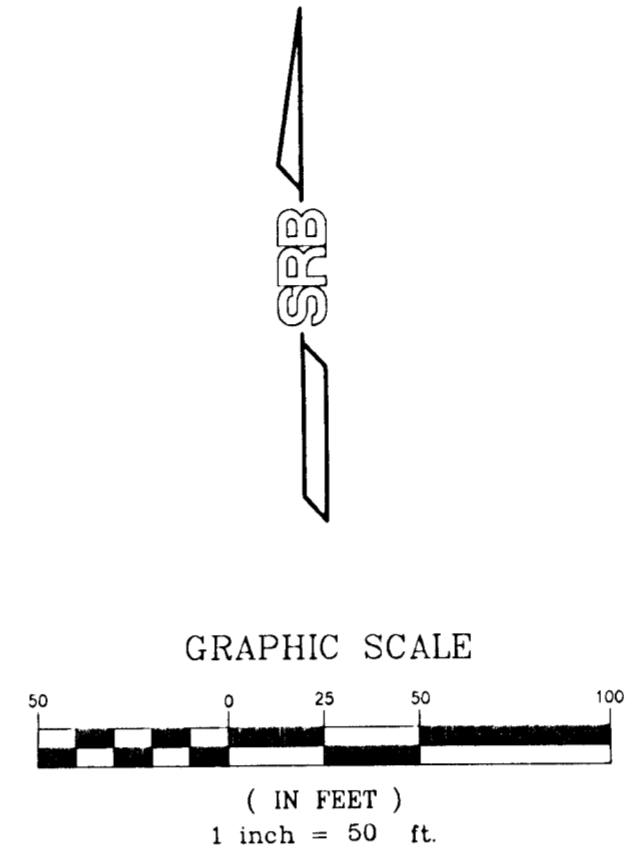
LEGAL DESCRIPTION:

The north 35 rods of the east 68 3/4 rods of the Northeast Quarter of Section 18, Township 27 South, Range 1 West of the Sixth Principal Meridian, Sedgwick County, Kansas, except that part platted as Brandt Commercial Addition, Wichita, Sedgwick County, Kansas.

OWNER:
Brandt Real Estate 13, L.L.C.
145 N. Westfield
Wichita, Ks. 67212

GROSS SIZE:
226,892.70 Sq. Ft.±
5.209 Acres±

NET SIZE:
205,693.51 Sq. Ft.±
4.722 Acres±



BENCH MARK: CITY OF WICHITA STANDARD DISC
N.W. COR. OF INTERSECTION OF MAIZE R. & 13TH ST. N.
108.5' N. & 71' W. OF INTERSECTION OF CENTERLINE OF BOTH
ELEV.=1347.42 NGVD

ON SITE B.M.: "C" CUT ON TOP OF CURB
101.4' W. & 25.4' N. OF N.E. COR. OF LOT 1,
WICHITA RETIREMENT RESIDENCE ADDITION.
ELEV.=1345.80 NGVD

LEGEND

- SS = SANITARY SEWER
- SWS = STORM WATER SEWER
- UGE = UNDER GROUND ELECTRIC
- UGT = UNDER GROUND TELEPHONE
- TELE. PED. TELEPHONE PEDISTAL
- G.M. GAS METER
- W.M. WATER METER
- L.P. LIGHT POLE
- T.P. TELEPHONE POLE
- P.O. POWER POLE
- H.L.P. HIGH LINE POLE
- G.A. GUY ANCHOR
- TR. ELECTRIC TRANSFORMER
- SIGN SIGN
- GAS REG. NATURAL GAS REGULATOR
- SWS M.H. STORM WATER SEWER MANHOLE
- SS M.H. SANITARY SEWER MANHOLE