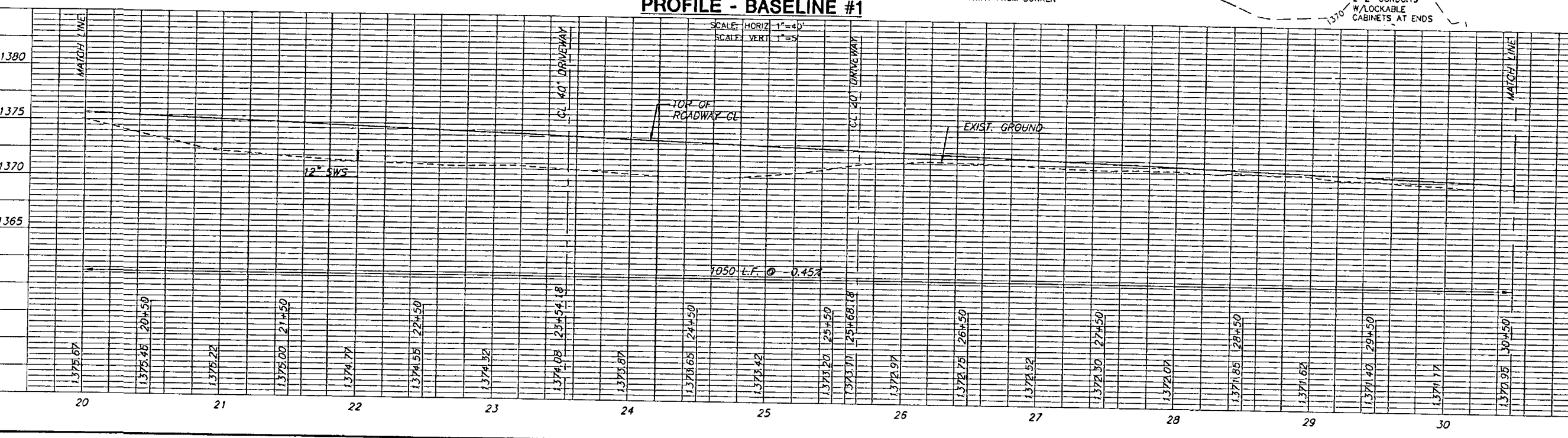
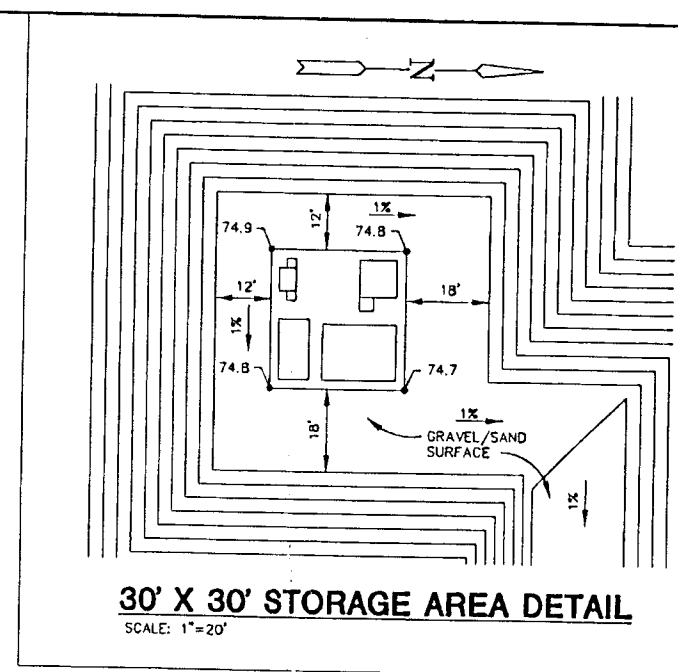
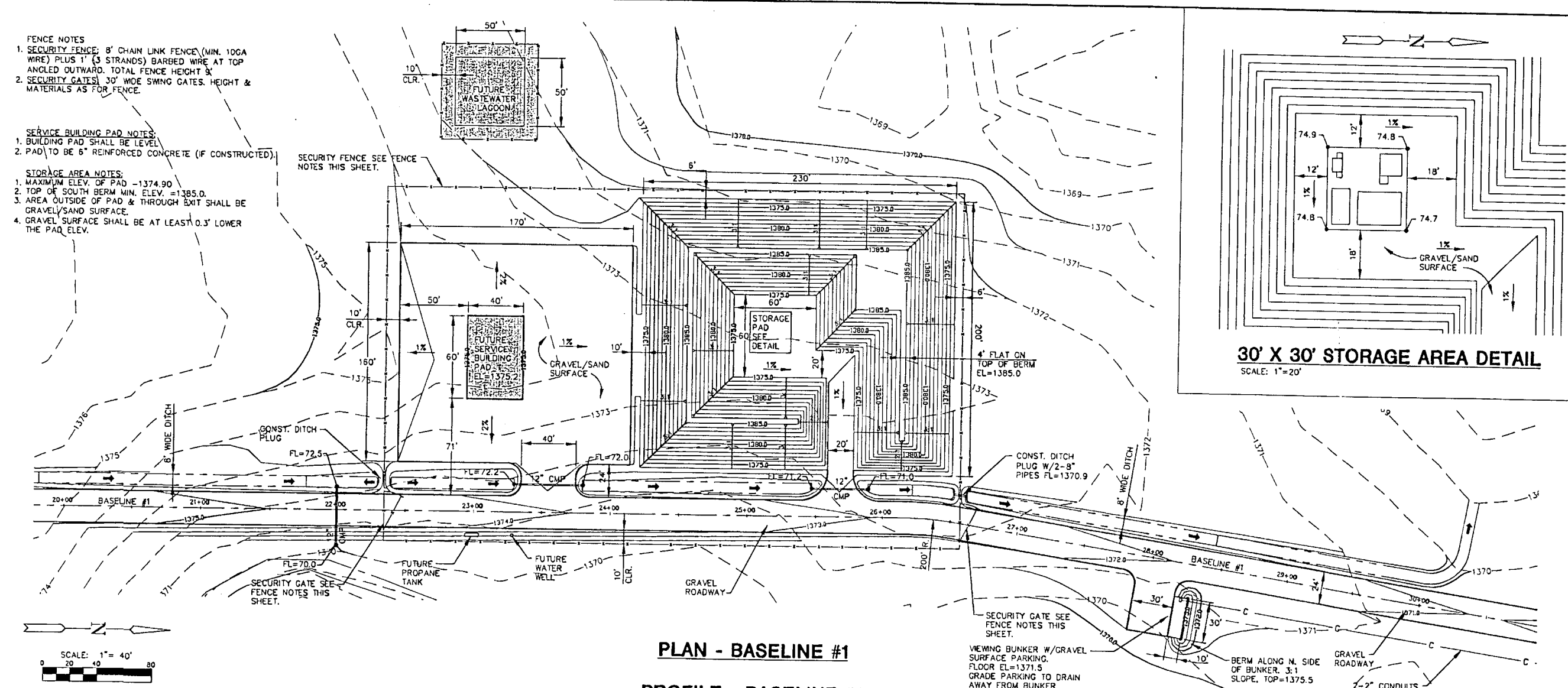
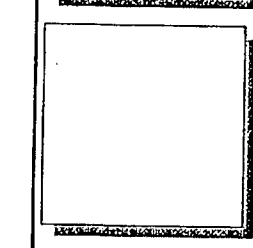


- FENCE NOTES**
- SECURITY FENCE: 8' CHAIN LINK FENCE (MIN. 10GA WIRE) PLUS 1' (3 STRANDS) BARBED WIRE AT TOP ANGLED OUTWARD. TOTAL FENCE HEIGHT 9'.
  - SECURITY GATES: 30' WIDE SWING GATES. HEIGHT & MATERIALS AS FOR FENCE.
- SERVICE BUILDING PAD NOTES**
- BUILDING PAD SHALL BE LEVEL.
  - PAD TO BE 6" REINFORCED CONCRETE (IF CONSTRUCTED).
- STORAGE AREA NOTES**
- MAXIMUM ELEV. OF PAD -1374.90
  - TOP OF SOUTH BERM MIN. ELEV. =1385.0
  - AREA OUTSIDE OF PAD & THROUGH EXIT SHALL BE GRAVEL/SAND SURFACE.
  - GRAVEL SURFACE SHALL BE AT LEAST 0.3' LOWER THE PAD ELEV.



**MKEC**  
ENGINEERING  
CONSULTANTS, INC.

411 N. WEBB ROAD  
WICHITA, K.S. 67208  
316-584-9600



**EOD DISPOSAL FACILITY**

**SITE PLAN**  
SHEET TITLE  
PROJECT NUMBER  
06530

DLM / MKEC / DLM  
CHECKED / DRAWN / CHECKED

ISSUED  
November 2006  
REVISED

SHEET NO.  
**4 of 7**

P:\LW\06530\06530\06530.DWG