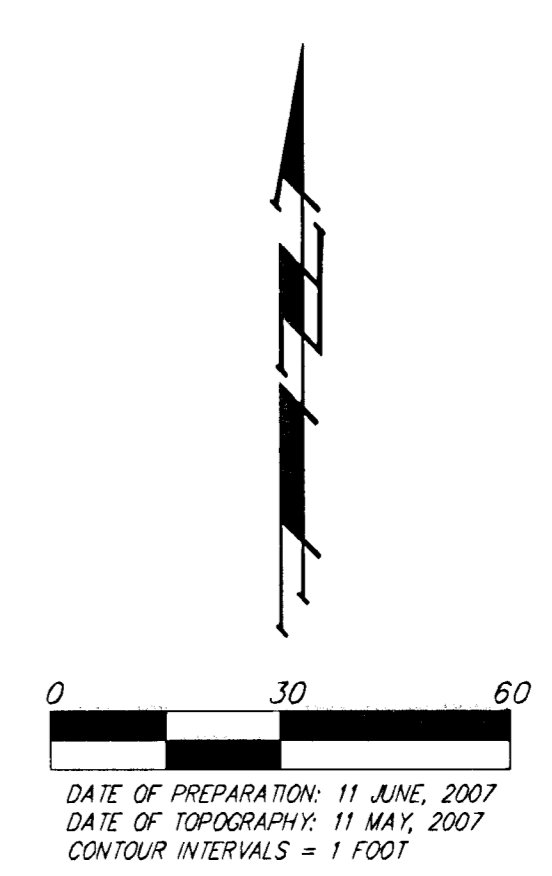
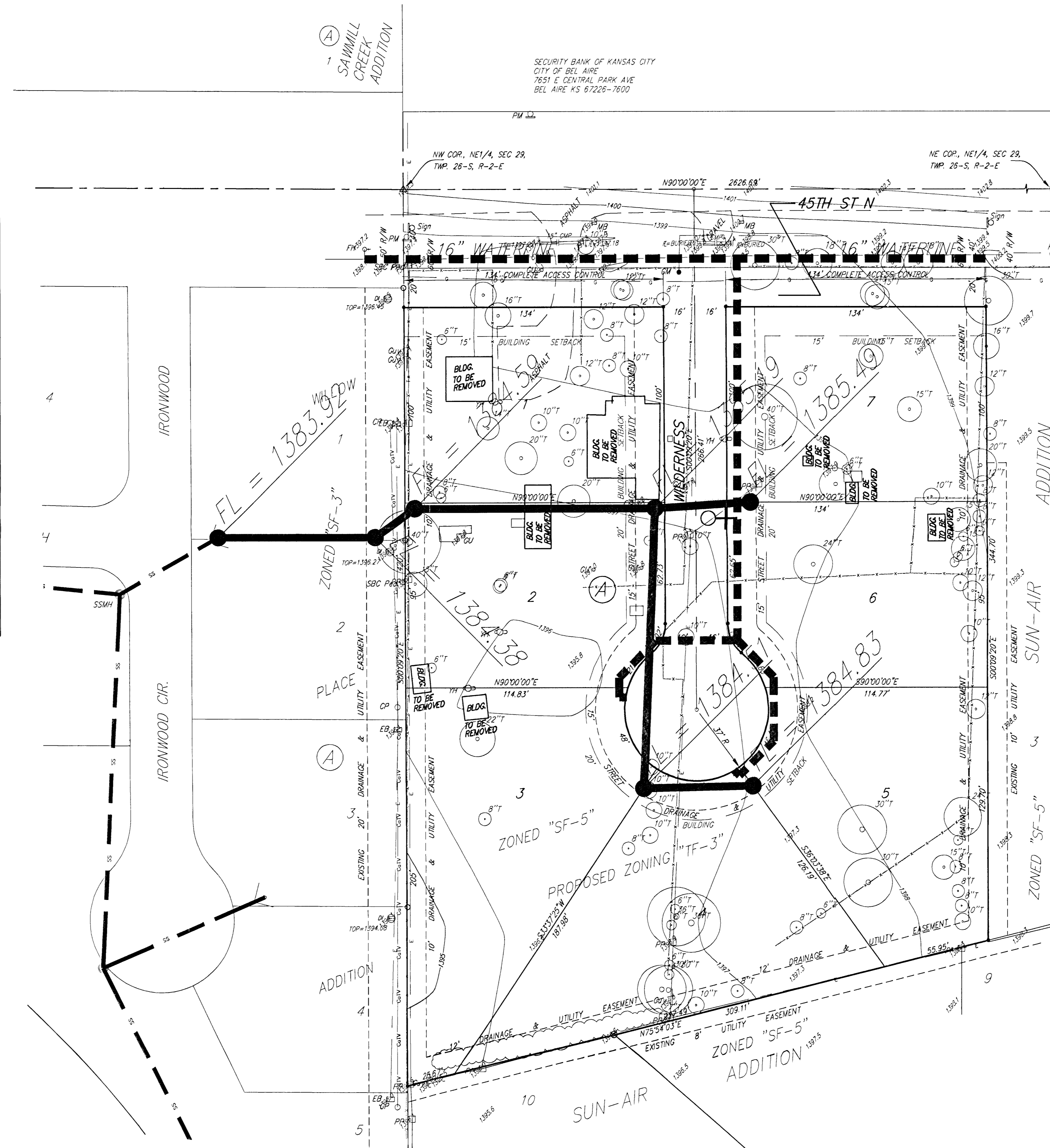


UTILITY PLAN WILLOW PLACE 2ND ADDITION WICHITA, SEDGWICK COUNTY, KANSAS

LEGEND

- Proposed Water Line
(8" Unless Noted Otherwise)
- Existing Water Line
(8" Unless Noted Otherwise)
- Proposed Sanitary Sewer Line
(8" Unless Noted Otherwise)
- Existing Sanitary Sewer Line
(8" Unless Noted Otherwise)
- Proposed Sanitary Sewer Manhole
- Proposed Fire Hydrant
- FL = XXXX.X Proposed Sanitary Sewer Flow



DATE OF PREPARATION: 11 JUNE, 2007
DATE OF TOPOGRAPHY: 11 MAY, 2007
CONTOUR INTERVALS = 1 FOOT

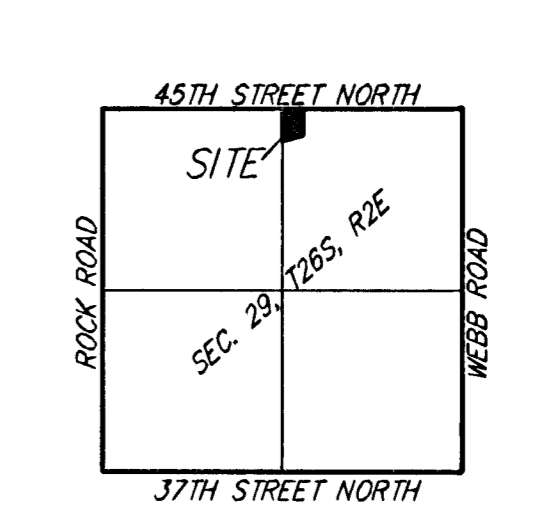
OWNER:
FORTY-FIFTH STREET PROPERTIES, LLC
2418 S. HOOPER,
WICHITA KS 67215
ATTN: MIKE BRAND
PHONE 945-3527

BENCHMARK:
3/4" IRON IN CONCRETE NORTH 1/4 CORNER
SEC. 28, TWP. 26 S., R-2-E
ELEVATION: 1400.30 (NGVD 29)

- SSMH = Sanitary Sewer Manhole
- CB = Cesspool
- PP = Power Pole
- GA = Guy Anchor
- EB = Electric Box
- SBC Ped = SBC Pedestal
- CM = Cable TV Pedestal
- GM = Gas Meter
- DI = Drop Inlet
- PO = Pole
- GP = Guard Post (Ballard)
- MB = Mail Box
- PM = Pipeline Marker
- Sign = Sign
- T = Tree

- # = #4 REBAR W/ "BAUGHMAN" CAP (FOUND)
- = #4 REBAR W/ "BAUGHMAN" CAP (SET)
- ⊙ = #4 REBAR W/ "TILSO" CAP (ARMSTRONG)
- ⊠ = #4 REBAR W/ "TILSO" CAP (GARBER)
- ⊗ = 1" IRON (FOUND)
- = 1/2" IRON (FOUND)
- △ = 3/4" IRON (FOUND)

- (M) = MEASURED
- (P) = PLATTED
- (C) = CALCULATED



NOTE:
A drainage plan has been developed for this subdivision and is on file with the City of Wichita, Kansas. Drainage intent shall remain as depicted or as modified with the approval of the City Engineer of the City of Wichita, Kansas. No obstructions which impede the flow of this drainage plan shall be allowed.

WILLOW PLACE 2ND
11 JUNE, 2007

Baughman Company, P.A.
315 6th St., Wichita, KS 67111 P 316-263-7111 F 316-263-0149
ENGINEERING | SURVEYING | PLANNING | LANDSCAPE ARCHITECTURE
F:\PLAT\WILLOW PLACE 2ND ADDITION\dwg\WILLOWPLACE2_F.dwg