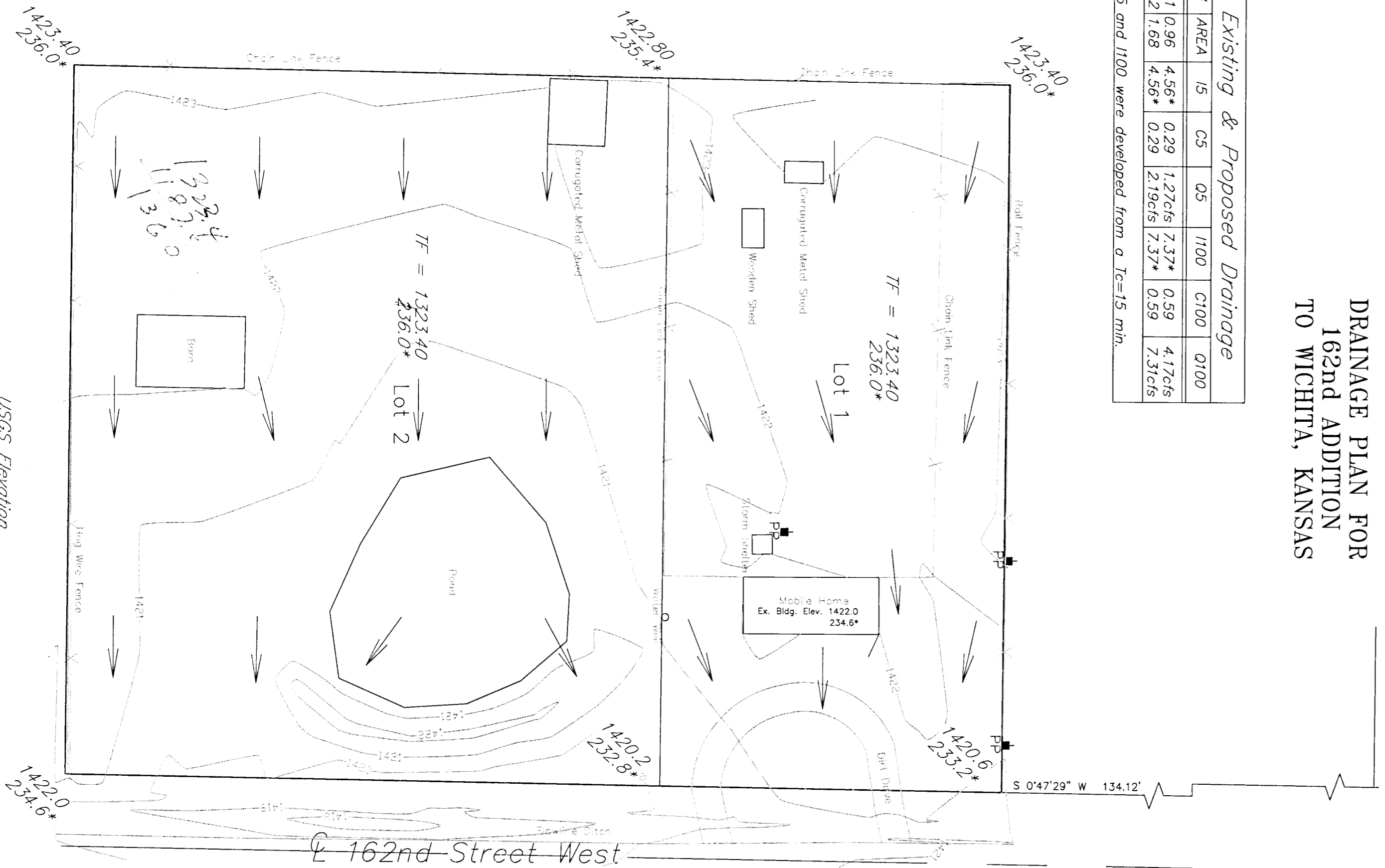


**DRAINAGE PLAN FOR
162nd ADDITION
TO WICHITA, KANSAS**

Existing & Proposed Drainage

Lot#	AREA	I5	C5	O5	I100	C100	Q100
Lot 1	0.96	4.56*	0.29	1.27cfs	7.37*	0.59	4.17cfs
Lot 2	1.68	4.56*	0.29	2.19cfs	7.37*	0.59	7.31cfs

* I5 and I100 were developed from a Tc=15 min.



USGS Elevation
* (City of Wichita Datum)

