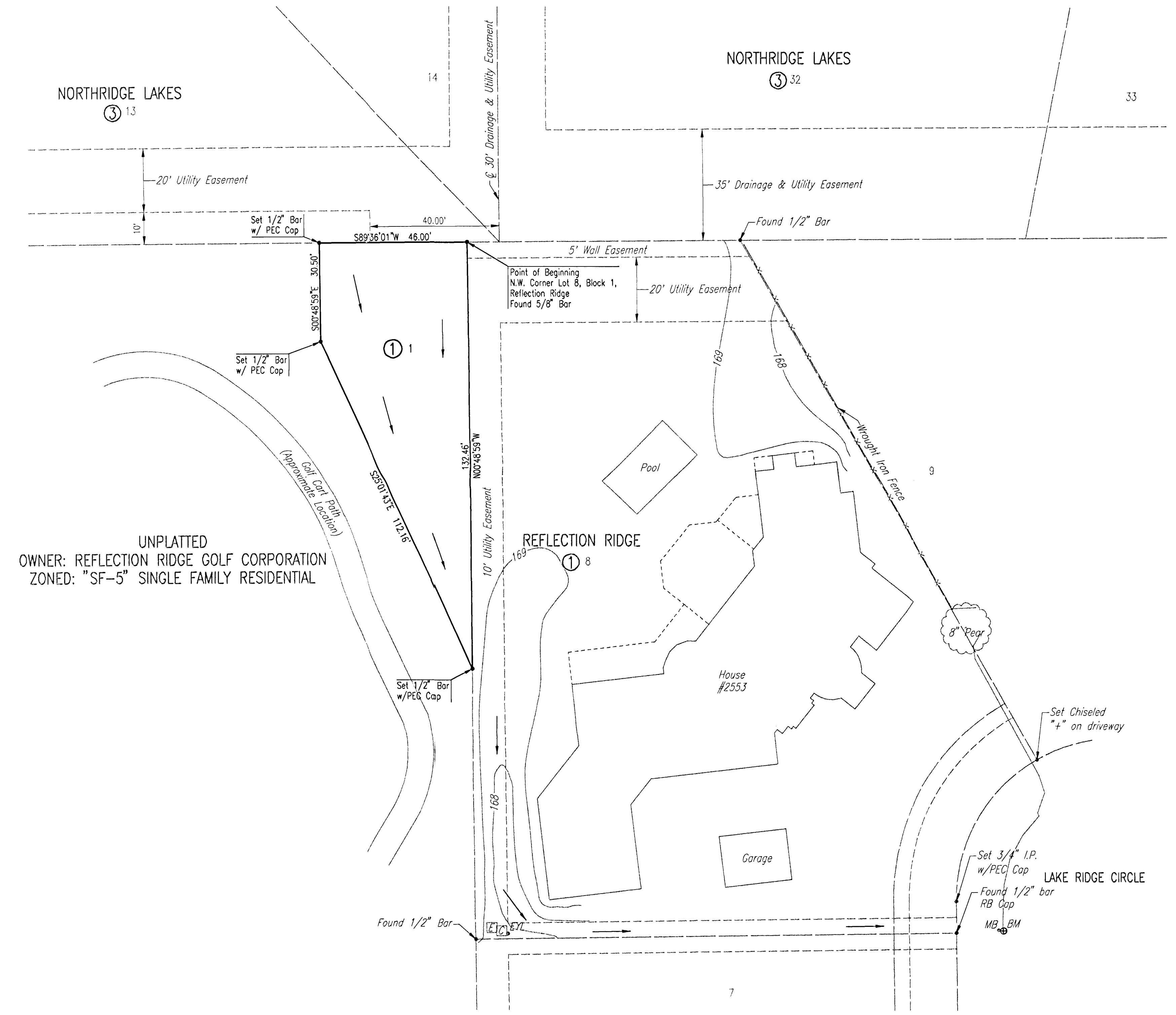
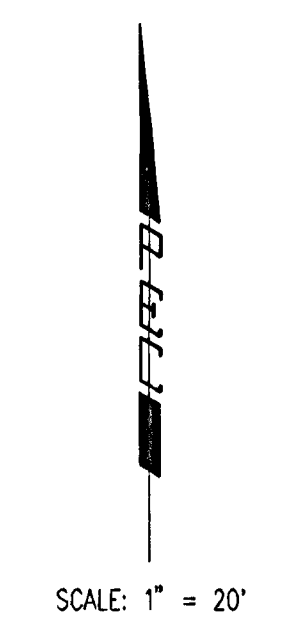


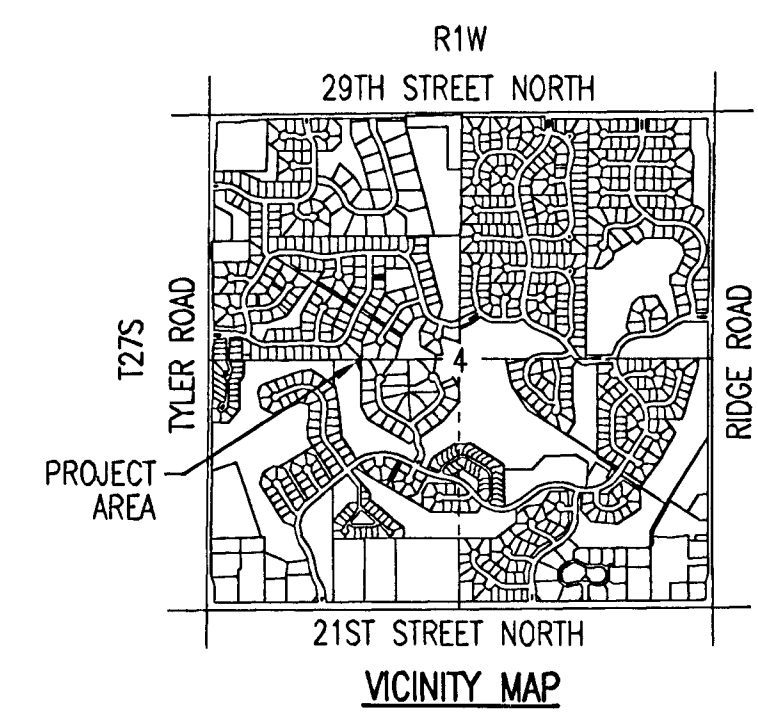
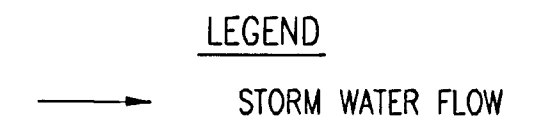
DRAINAGE PLAN
RATZLAFF ADDITION
 TO WICHITA, SEDGWICK COUNTY, KANSAS



UNPLATTED
 OWNER: REFLECTION RIDGE GOLF CORPORATION
 ZONED: "SF-5" SINGLE FAMILY RESIDENTIAL



PROJECT BENCHMARK:
 CHISELED "o" ON WEST TOP OF CURB OF LAKE RIDGE CIRCLE BY MAILBOX
 AT SE CORNER OF LOT 8, BLOCK 1, REFLECTION RIDGE ADDITION.
 ELEVATION = 163.56 CITY DATUM
 1350.96 N.G.V.D.



Professional Engineering Consultants, P.A.
 303 S. TOPEKA • WICHITA, KANSAS 67202
 316-262-2691 • FAX 316-262-3003

02:NR: PNH: OPER: JIS: SCALE: 1-20:00
 02:2005:054:39:001:DWG:05439-001-Drainage Plan 10-10-2005 08:57:22 am