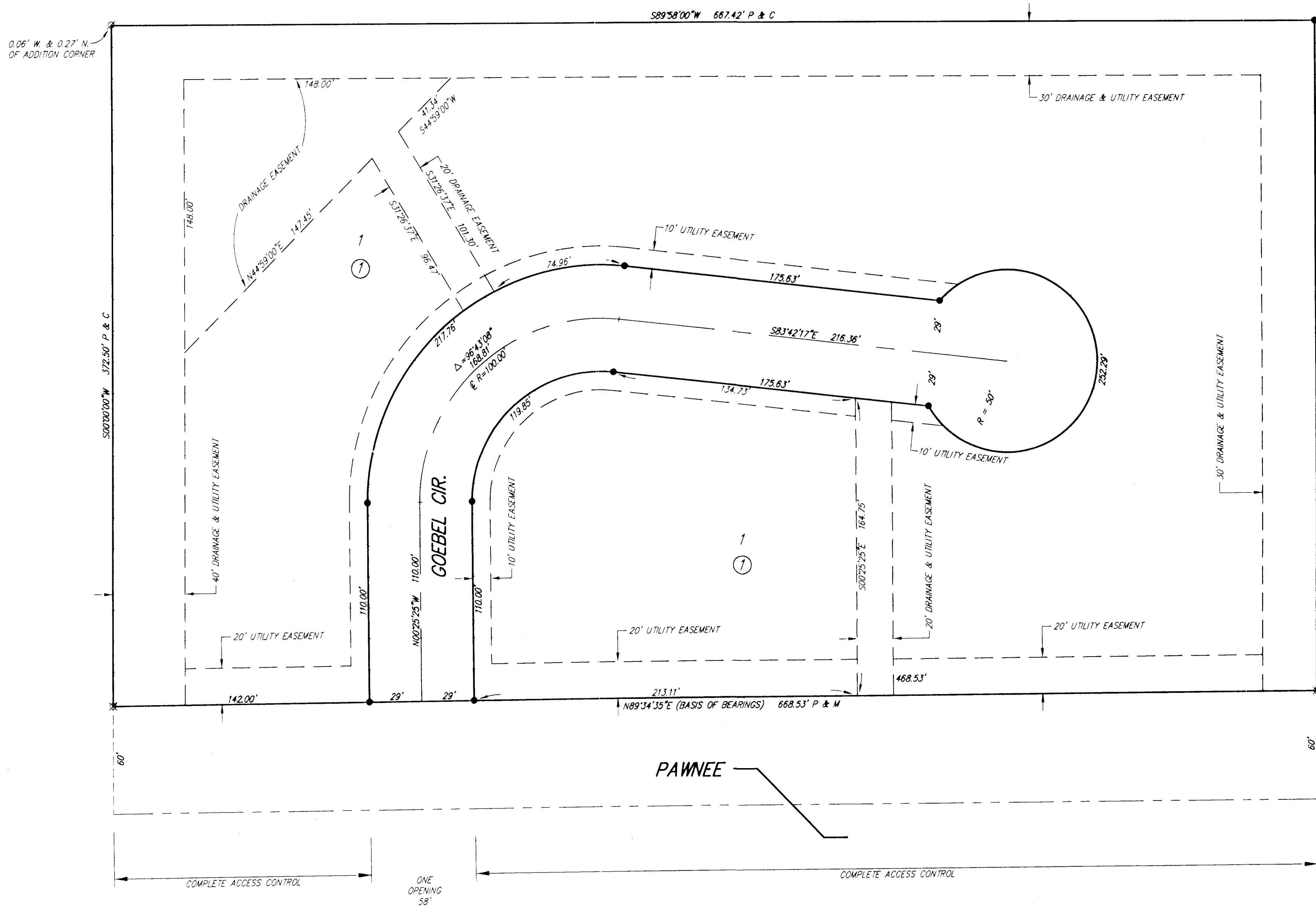


BRENTWOOD SOUTH 3RD ADDITION

Wichita, Sedgwick County, Kansas

FINAL TRACING RECORD

1-15-08



C = Calculated
M = Measured
P = Plotted (Brentwood South 2nd Addition)

SURVEY MARKER LEGEND

- ⊗ 1/2" REBAR W/BAUGHMAN CAP (FOUND)
- ⊗ 5/8" REBAR W/RUGGLES & BOHM CAP (FOUND)
- 5/8" REBAR W/RUGGLES & BOHM CAP (SET)

BENCH MARK: COW BENCHMARK AT THE SOUTHEAST CORNER OF THE INTERSECTION OF CRANBROOK AND SKINNER
ELEV.=1334.02 (NGVD29)

ON SITE BENCH MARK: R.R. SPIKE ON EAST FACE OF POWER POLE 1,215 FEET EAST AND 46 FEET NORTH OF THE S.W. CORNER SEC. 13, T27S, R2E
ELEV.=1388.99 (NGVD29)

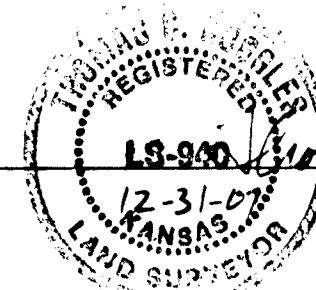


State of Kansas)
Sedgwick County) SS

We, Ruggles & Bohm, P.A., Land Surveyors in aforesaid county and state, do hereby certify that, under the supervision of the undersigned, we have surveyed and platted "BRENTWOOD SOUTH 3RD ADDITION", Wichita, Sedgwick County, Kansas, being a replat of Lot 1, Block B, Brentwood South 2nd Addition, Wichita, Sedgwick County, Kansas, and that the accompanying plat is a true and correct exhibit of the property surveyed.

All public easements and dedications are hereby vacated by virtue of K.S.A. 12-512(b).

Ruggles & Bohm, P.A.



Thomas C. Ruggles
Thomas C. Ruggles
Land Surveyor

Know all men by these presents that we, the undersigned, have caused the land described in the surveyor's certificate to be platted into a Lot, a Block, and a Street, to be known as "BRENTWOOD SOUTH 3RD ADDITION", Wichita, Sedgwick County, Kansas. Access Controls as indicated are hereby granted to the appropriate governing body. Utility Easements are hereby granted for the construction and maintenance of all public utilities. Drainage Easements are hereby granted to the public as indicated for drainage purposes. The street is hereby dedicated to and for the use of the public. A drainage plan has been developed for this plat; the property shall remain at established grades, or as modified with the approval of the City Engineer, and unobstructed to allow for the conveyance of storm water.

JBC Investments, Inc.

Stephen G. Miller
Stephen G. Miller
President

State of Kansas)
Sedgwick County) SS

The foregoing instrument acknowledged before me, this 10th day of January, 2008, by Stephen G. Miller, President of JBC Investments, Inc., on behalf of the corporation.

Richard E. Franz
Richard E. Franz
Notary Public

My appointment expires 02-13-2011

We, the undersigned, holders of a mortgage on the above described property, do hereby consent to this plat of "BRENTWOOD SOUTH 3RD ADDITION", Wichita, Sedgwick County, Kansas, this 14th day of January, 2008.

Garden Plain State Bank

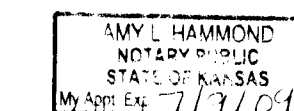
Patrick F. Waldon
Patrick F. Waldon
President

State of Kansas)
Sedgwick County) SS

The foregoing instrument acknowledged before me, this 14th day of January, 2008, by Patrick F. Waldon, President of Garden Plain State Bank on behalf of the Bank.

Amy J. Hammond
Amy J. Hammond
Notary Public

My appointment expires 7/9/09



This plat of "BRENTWOOD SOUTH 3RD ADDITION", Wichita, Sedgwick County, Kansas, has been submitted to and approved by the Wichita-Sedgwick County Metropolitan Area Planning Commission, Wichita, Kansas.

Dated this ___ day of ___, 200__.

Wichita-Sedgwick County Metropolitan Area Planning Commission

Chair
M.S. Mitchell

Secretary
John L. Schlegel

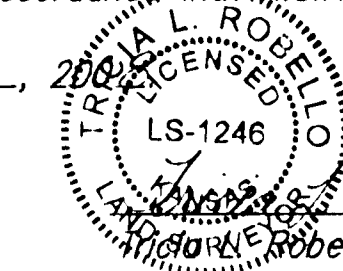
This plat approved and all dedications shown hereon accepted by the City Council of the City of Wichita, Kansas, this ___ day of ___, 200__.

At the Direction of the City Council

Mayor
Carl Brewer

City Clerk
Karen Sublett

Reviewed in accordance with K.S.A. 58-2005 on this 7th day of January, 2008.



Richard E. Franz
Richard E. Franz
Deputy County Surveyor
Sedgwick County Kansas

Entered on transfer record this ___ day of ___, 200__.

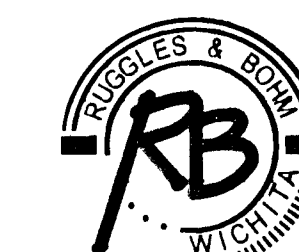
County Clerk
Don Brace

State of Kansas)
Sedgwick County) SS

This is to certify that this plat has been filed for record in the office of the Register of Deeds, this ___ day of ___, 200__, at ___ o'clock ___ M., and is duly recorded.

Register of Deeds
Bill Meek

Deputy
Tonya Buckingham



Ruggles & Bohm, P.A.
Engineering, Surveying, Land Planning

924 North Main
Wichita, Kansas 67203
www.rbkansas.com

(316) 264-8008
(316) 264-4621 fax
E-mail: info@rbkansas.com

DWG FILE: SURVEY BASE
PROJECT NO. 31619
DECEMBER 27, 2007