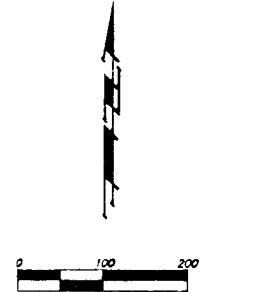
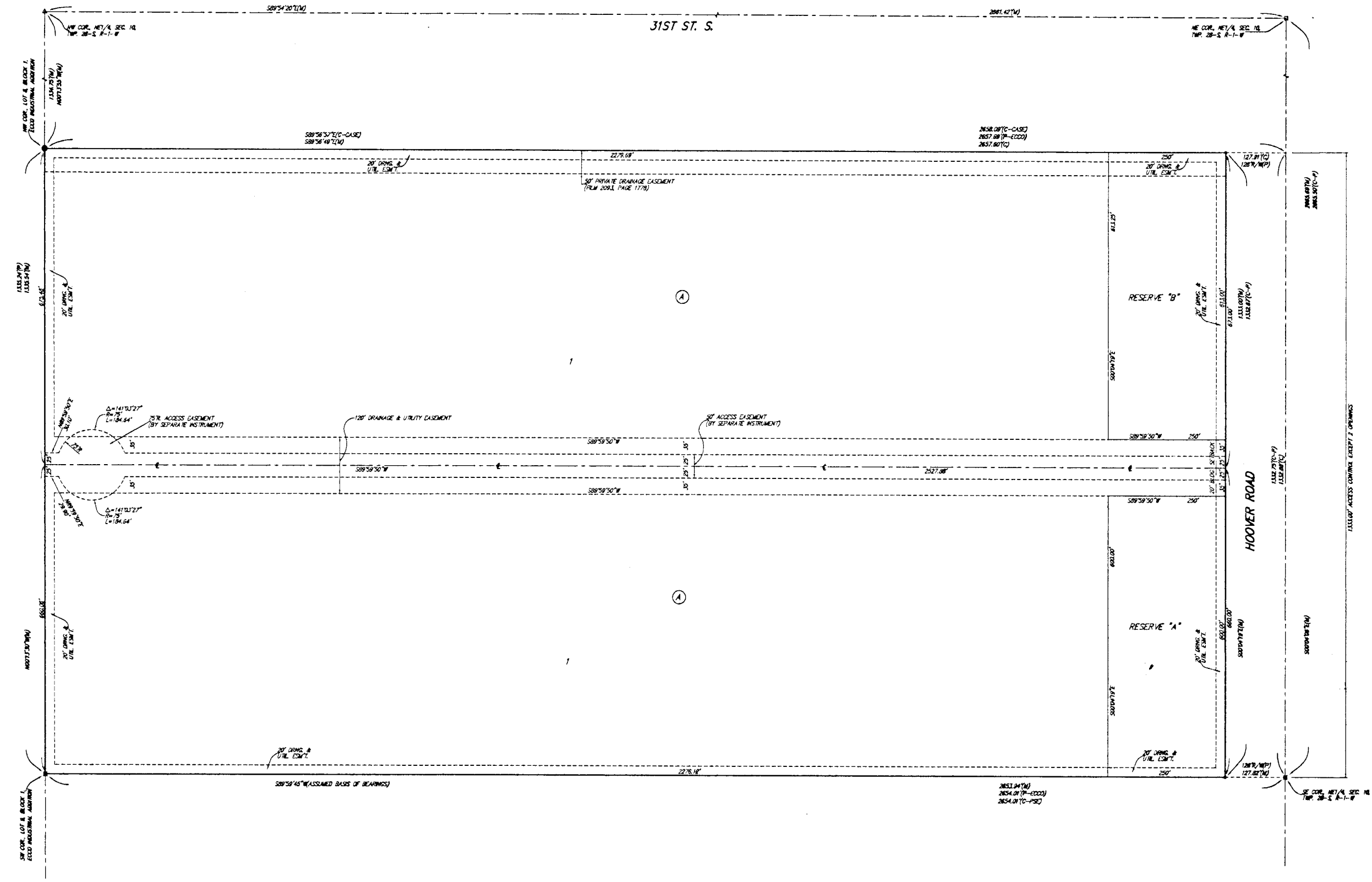


ECCO INDUSTRIAL 2ND ADDITION

WICHITA, SEDGWICK COUNTY, KANSAS



- = 1/4" REBAR BY "TROUGHMAN" CAP (FOUND)
 - = 1/2" PUM (FOUND)
 - = 1" PUM (FOUND)
 - ◐ = 2" PUM (FOUND)
 - ◑ = 3" PUM (FOUND)
- (M) = MEASURED
 (P) = PLATED
 (C) = CALCULATED
 (P-C) = PLATED PER INFO FROM FOOD INSPECTOR AND
 (C-C) = CALCULATED PER INFO FROM FOOD INSPECTOR AND
 (P-P) = PLATED PER INFO FROM A.S. CASE AND
 (C-P) = CALCULATED PER INFO FROM A.S. CASE AND
 (P-C) = CALCULATED PER PLATED INFO

BENCHMARK:
 HOOVER ROAD AND 31ST STREET SOUTH -
 CITY OF WICHITA BENCHMARK 200.
 THE CORNER OF SECTION 36, T4S, R2E, S12W
 IS 100.00 FEET WEST OF
 HOOVER RD.
 ELEV. = 1297.24 MCH 02/08

LOT	BLK.	ELEVATION
1	A	1297.8

NOTE:
 A DRAINAGE PLAN HAS BEEN DEVELOPED FOR THIS SUBDIVISION AND IS ON FILE WITH THE CITY OF WICHITA, KANSAS. DRAINAGE VENT SHALL BE INSTALLED AS SHOWN ON SAID DRAINAGE PLAN. THE CITY ENGINEER OF THE CITY OF WICHITA, KANSAS, HAS REVIEWED SAID DRAINAGE PLAN AND THE FLOW OF THIS DRAINAGE PLAN SHALL BE ALLOWED.