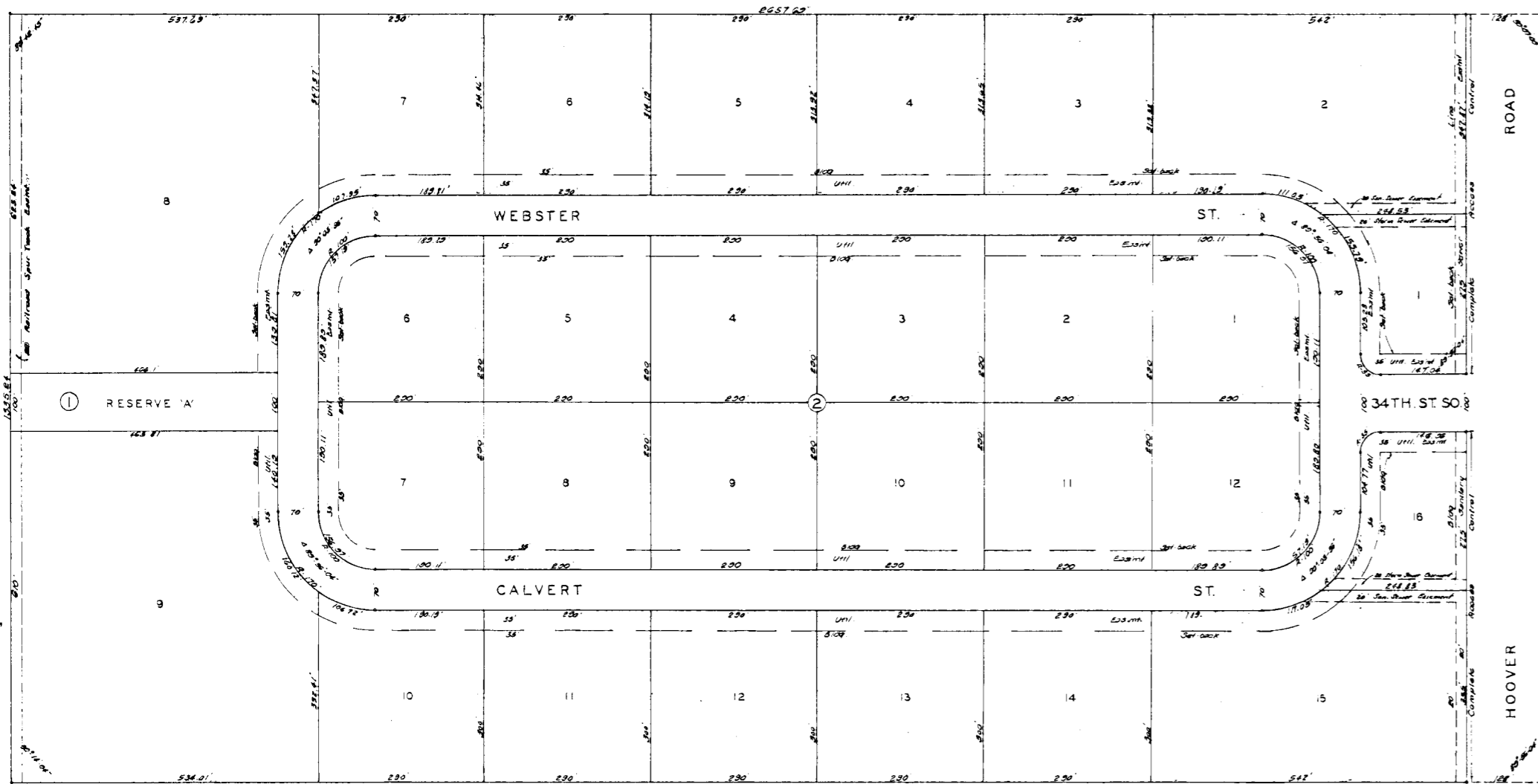


# ECCO INDUSTRIAL ADDITION

SEDGWICK COUNTY KANSAS



State of Kansas ss We, Baughman Company, Surveyors in and for Sedgwick County and state do hereby certify that we have surveyed and platted "ECCO INDUSTRIAL ADDITION" Sedgwick County, Kansas, and that the accompanying plat is a true and correct exhibit of the property surveyed described as the north one-half of the N.E. 1/4 of Sec. 10, T.23-S. R.1-W. 24/76 22/15

Baughman Company  
 William L. Baughman, Surveyor

Know all men by these presents that we, Martin K. Eby Construction Co. Inc. a corporation by Martin K. Eby Jr., President and James R. Brier III, Executive Vice-President, have caused the land described in the surveyors certificate to be platted into blocks, lots and streets, and a Reserve to be known as "ECCO INDUSTRIAL ADDITION" Sedgwick County, Kansas. The Reserve is reserved for access from lots to the spur track. Easements are hereby granted as indicated for all utilities, sanitary sewer construction and maintenance, and for drainage. The streets are hereby dedicated to and for the use of the public. All easement rights of access to or from Hoover Road and across the east line of lot 1 and 13 and 15 and 16, Block 1 are hereby granted the appropriate governing body.

Martin K. Eby Construction Co. Inc.  
 Martin K. Eby Jr., President  
 James R. Brier III, Exec. Vice-President

10.00 Restrictive Covenants #183 pg 1055

State of Kansas ss Be it remembered that on this 14 day of March 1976, before me a notary public in Sedgwick County and state came Martin K. Eby Jr., President and James R. Brier III, Executive Vice-President of Martin K. Eby Construction Co. Inc. to me known to be the same persons who executed the foregoing instrument of writing and duly acknowledged the execution of the same. In testimony whereof I have hereunto set my hand and affixed my notarial seal the day and year above written.

Notary Public  
 Jess Meyer  
 March 8, 1977

This plat of "ECCO INDUSTRIAL ADDITION" Sedgwick County, Kansas has been submitted to and approved by the Wichita-Sedgwick County Metropolitan Area Planning Commission, Wichita, Kansas. Dated this 17 day of January 1974.

Wichita-Sedgwick County Metropolitan Area Planning Commission.  
 Carl E. Buse, Chairman  
 George Chase, County Clerk

Entered on transfer records this 22 day of May 1976  
 George Chase, County Clerk

This plat approved and all dedications shown hereon adopted by the Board of Commissioners of Sedgwick County, Kansas, this 23 day of March 1976.

Chairman  
 Commissioner  
 County Clerk

State of Kansas ss This is to certify that this plat was filed for record in the office of the Register of Deeds this 18 day of May 1976 at 2:56 o'clock P.M. and is duly recorded.

Register of Deeds  
 Deputy