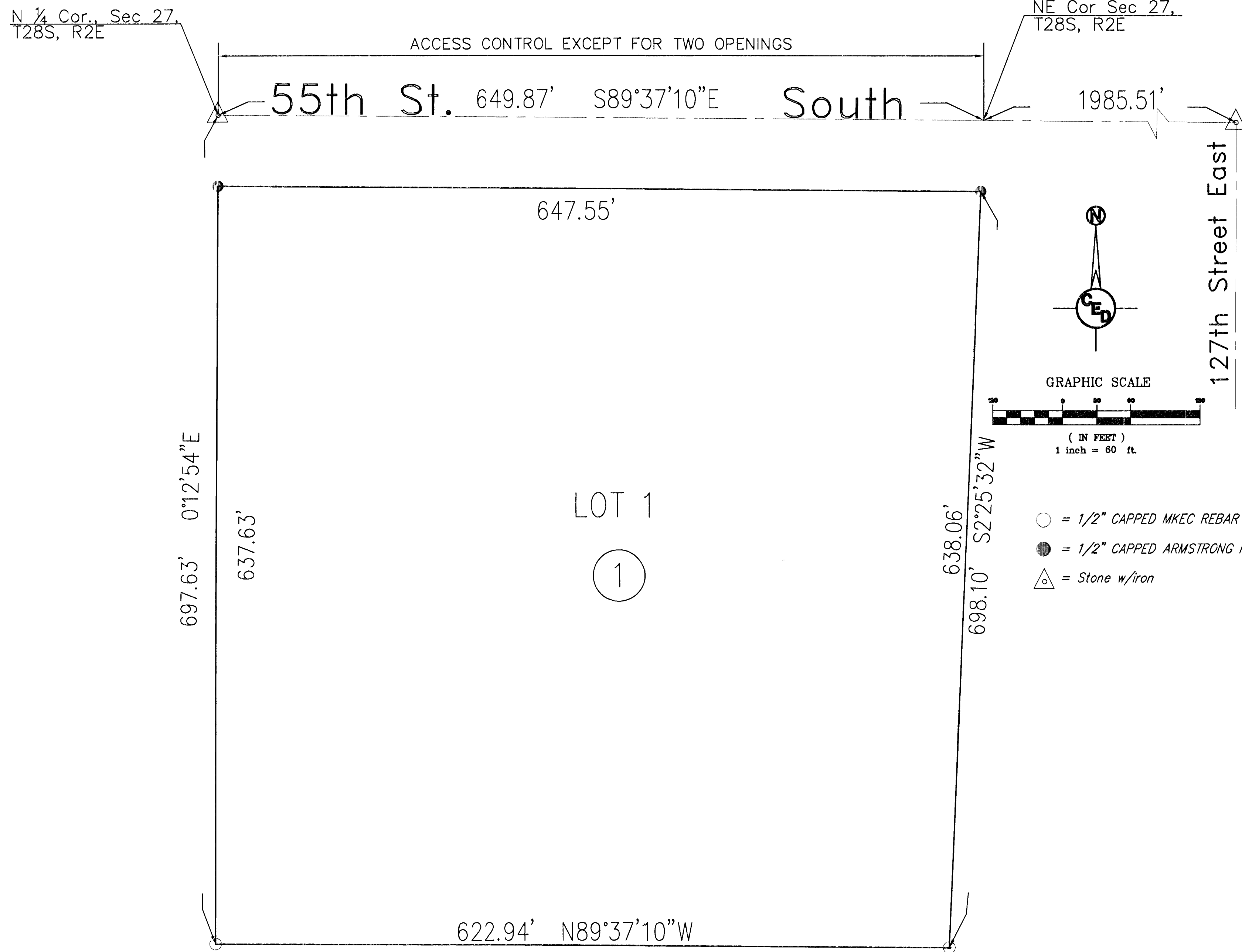


EDDY'S ACRES ADDITION

TO SEDGWICK COUNTY, KANSAS



State of Kansas) SS
Sedgwick County)

We, Armstrong Land Survey, P.A.,
Surveyors in aforesaid county and state do hereby certify that, under
the supervision of the undersigned, we have surveyed and platted
"EDDY'S ACRES ADDITION, to Sedgwick County, Kansas and that the
accompanying plat is a true and correct exhibit of the property
surveyed, described as follows:

That part of the Northeast Quarter of Section 27, Township 28 South,
Range 2 East of the 6th P.M., Sedgwick County, Kansas described as
Beginning at the Northwest corner thereof; thence S 89° 37' 10" E along
the North line of said Northeast Quarter 649.87 feet; thence S 2° 25'
32" W, 698.10 feet; thence N 89° 37' 10" W parallel with said North line,
622.94 feet to the West line of said Northeast Quarter; thence N 0° 12'
54" E along said West line, 697.63 feet to the Point of Beginning.

All Public easements and dedications being vacated by
virtue of K.S.A. 12-512(b).

Date: _____ 2008

Donald C. Armstrong, L.S. # 780

Reviewed in accordance with K.S.A. 58-2005 on this
_____ day of _____, 2008.

Deputy County Surveyor
Tricia L. Robello, L.S. #1246

This plat of "EDDY'S ACRES ADDITION", to Sedgwick
County, Kansas, has been submitted to and approved by the Wichita-Sedgwick
County Metropolitan Area Planning Commission, Wichita, Kansas.
Dated this _____ day of _____, 2008.

Wichita-Sedgwick County Metropolitan Area Planning Commission

Chairman
M.S. Mitchell

Secretary
John L. Schlegel

This plat approved and all dedications shown hereon, are
hereby accepted by the Board of County Commissioners, Sedgwick County,
Kansas, this day _____ of _____, 2008.

Chairman
Tom Winters

County Clerk
Don Brace

Entered on transfer record this _____ day of
_____, 2008.

County Clerk
Don Brace

State of Kansas) SS
Sedgwick County)

This is to certify that this plat has been filed for record
in the office of the Register of Deeds, this _____ day of _____,
2008, at _____ o'clock _____ M. and is duly recorded.

Register of Deeds
Bill Meek

Deputy
Tonya Buckingham

State of Kansas) SS
Sedgwick County)

The foregoing instrument acknowledged before me, this
_____ day of _____ 2008, by _____ of
Intrust Bank NA, on behalf of the Bank.

Stephen M. Eddy Lisa M. Eddy

State of Kansas) SS
Sedgwick County)
The foregoing instrument acknowledged before me, this
_____ day of _____ 2008, by Stephen M. Eddy and Lisa M. Eddy,
Havener, husband and wife.

My App't. Exp _____ Notary Public

We, the undersigned, holders of a mortgage on the above
described property, do hereby consent to this plat of "EDDY'S ACRES
ADDITION", to Sedgwick County, Kansas.
Intrust Bank NA

- = 1/2" CAPPED MKEC REBAR (FOUND)
- = 1/2" CAPPED ARMSTRONG REBAR SET
- △ = Stone w/iron

