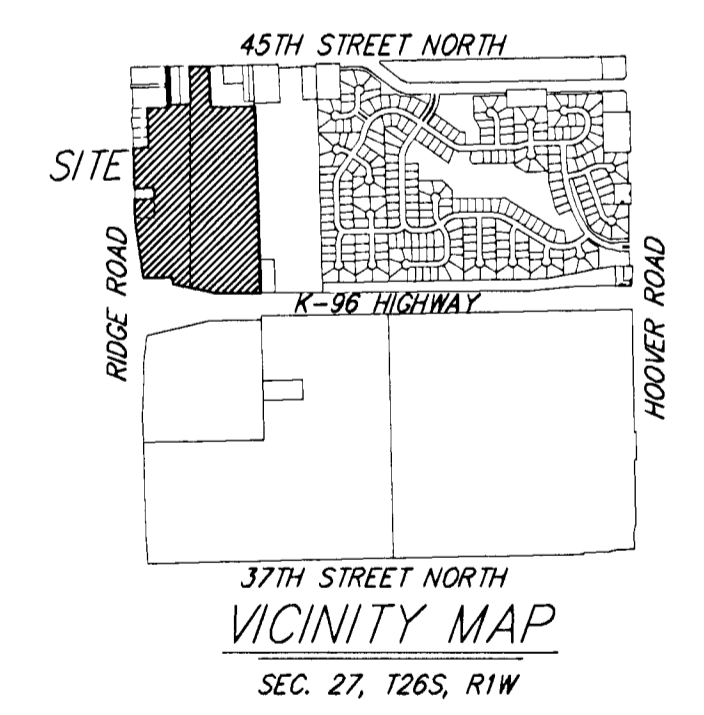
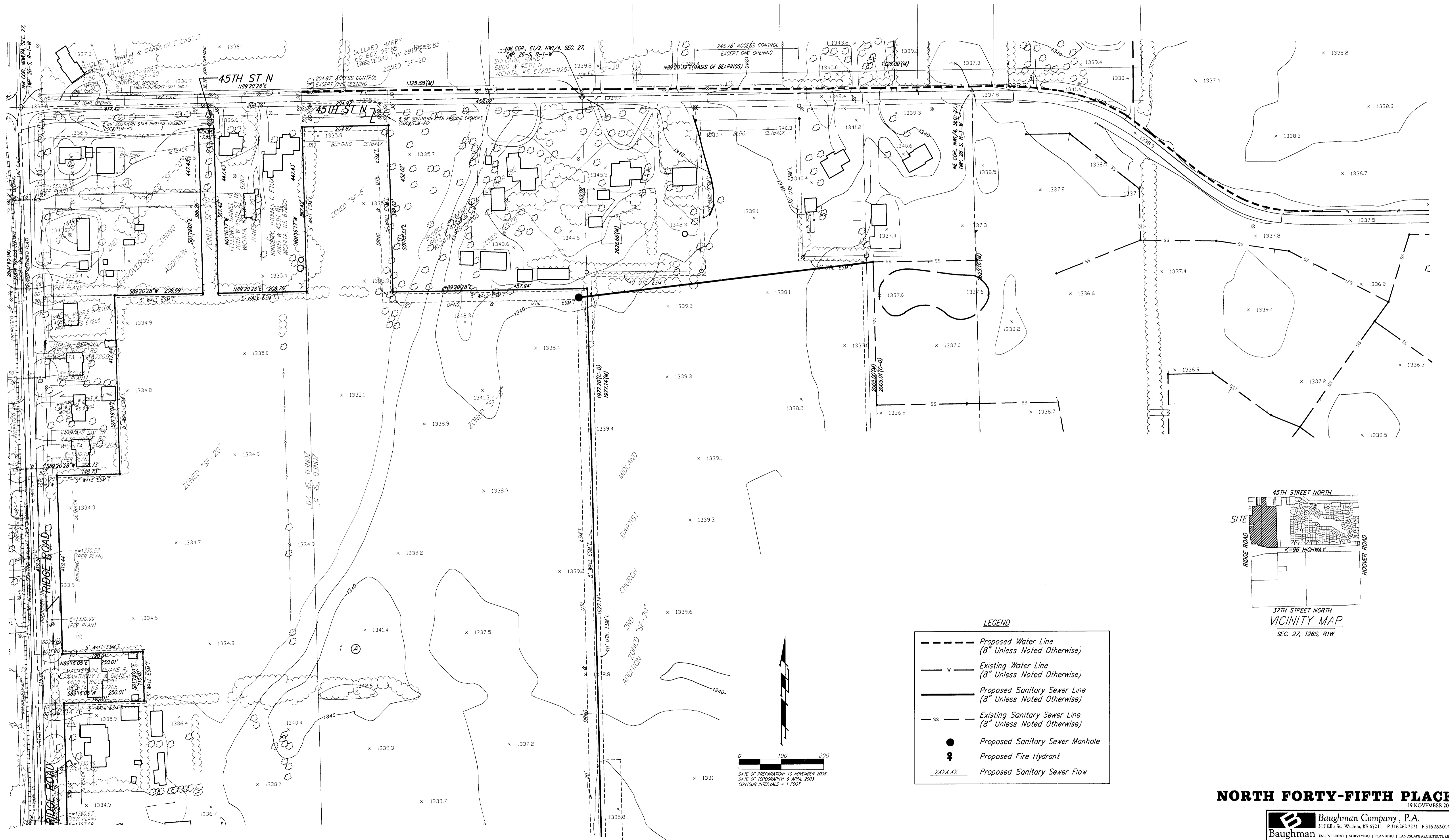
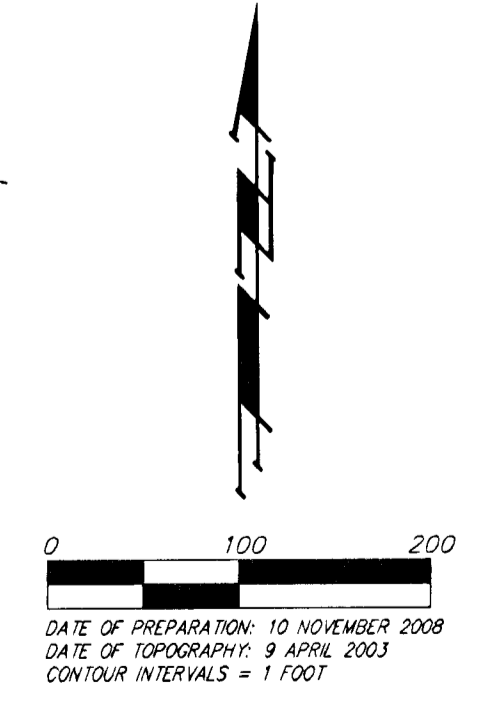


UTILITY CONCEPT NORTH FORTY-FIFTH PLACE WICHITA, SEDGWICK COUNTY, KANSAS



LEGEND

	Proposed Water Line (8" Unless Noted Otherwise)
	Existing Water Line (8" Unless Noted Otherwise)
	Proposed Sanitary Sewer Line (8" Unless Noted Otherwise)
	Existing Sanitary Sewer Line (8" Unless Noted Otherwise)
	Proposed Sanitary Sewer Manhole
	Proposed Fire Hydrant
	Proposed Sanitary Sewer Flow



NORTH FORTY-FIFTH PLACE 19 NOVEMBER 2008

Baughman Company, P.A.
 315 Ella St. Wichita, KS 67211 P 316-262-7271 F 316-262-0149
 Baughman ENGINEERING | SURVEYING | PLANNING | LANDSCAPE ARCHITECTURE
 E:\UTIL\NORTHFORTYFIFTHPLACE-up.DWG-TJW