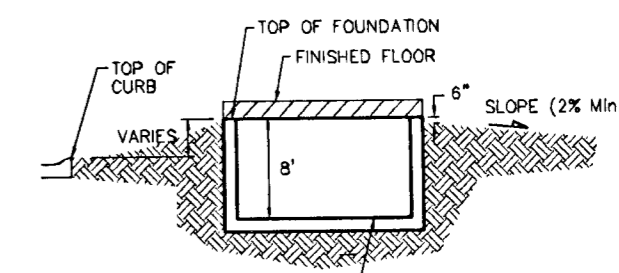


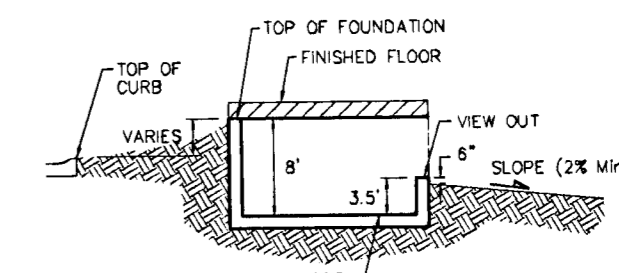
GRADING PLAN

SOUTHERN RIDGE 4TH ADDITION

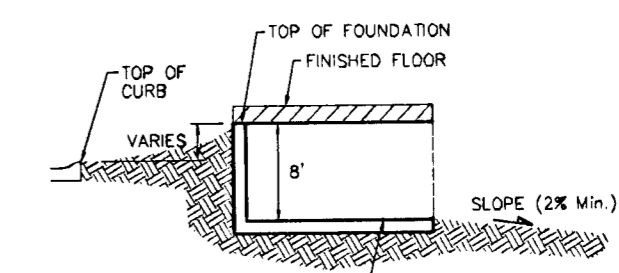
WICHITA, SEDGWICK COUNTY, KANSAS



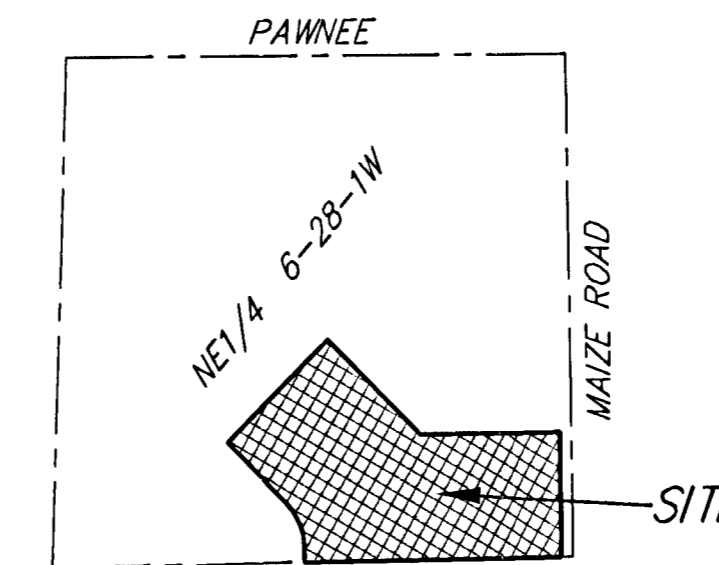
TYPICAL NON-VIEW OUT DETAIL
NO SCALE



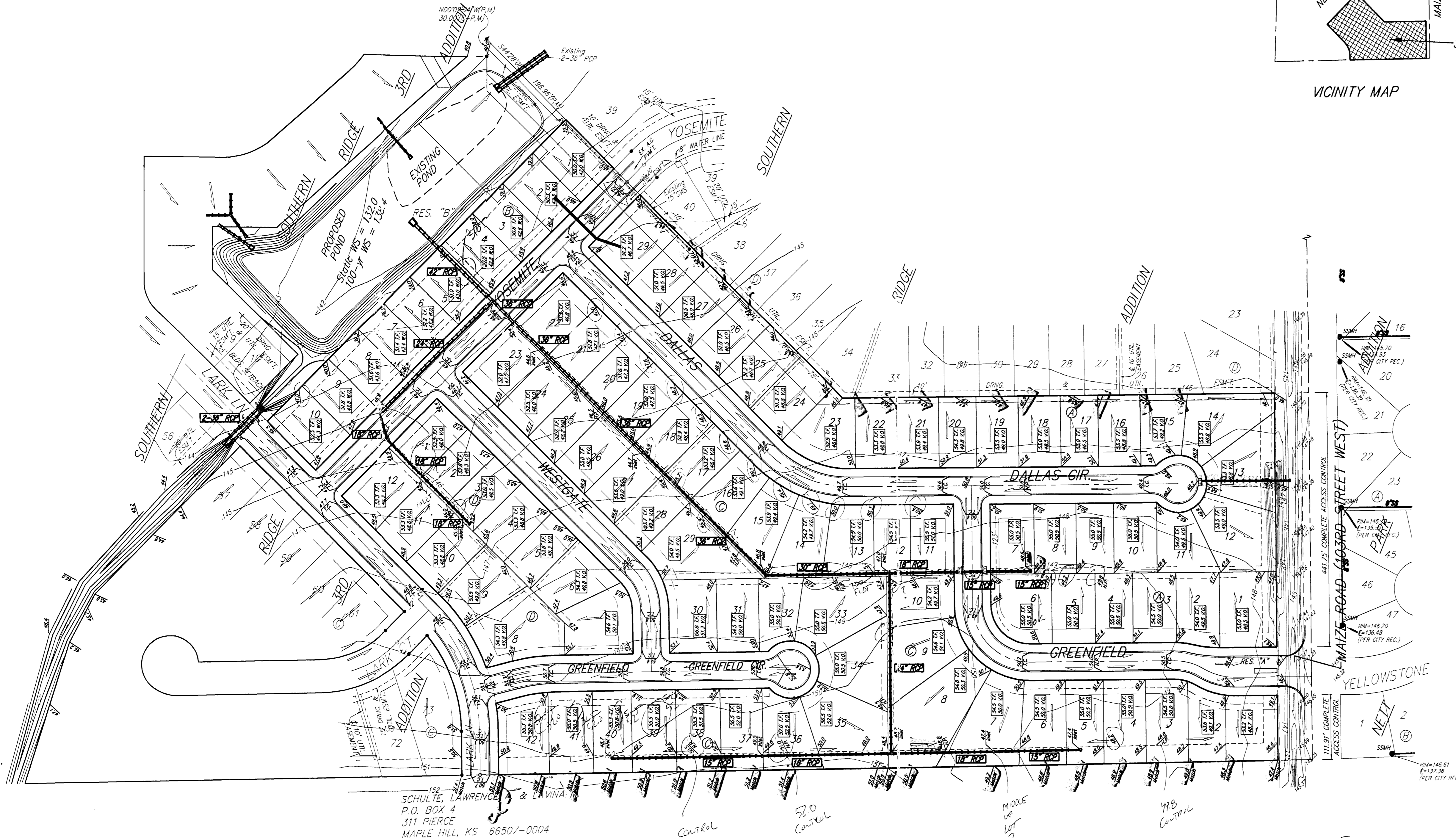
TYPICAL VIEW OUT DETAIL
NO SCALE



TYPICAL WALK OUT DETAIL
NO SCALE

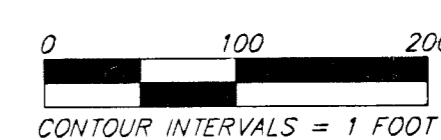
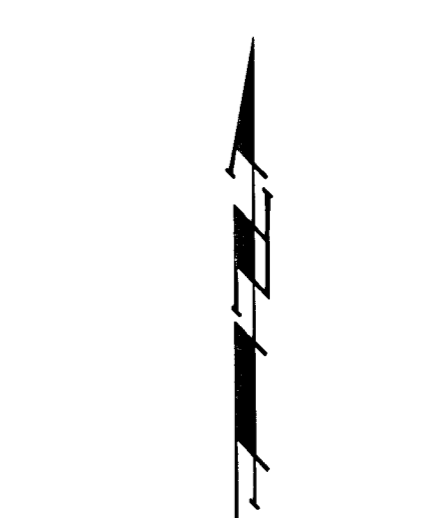


VICINITY MAP



NOTES:

1. PROPOSED TOP OF FOUNDATION ELEVATIONS ARE SHOWN ON PLANS. CONTRACTOR TO SET FINISHED FLOOR AND GARAGE FLOOR ELEVATIONS. ALL STREET ELEVATIONS SHOWN ON PLANS ARE FOR TOP OF CURB (FULL-HEIGHT).
2. THIS GRADING PLAN IS DESIGNED WITH VIEW-OUTS AND WALK-OUTS. ELEVATIONS SHOWN AS XXX V.O. DEPICT VIEW-OUT STRUCTURES. ELEVATIONS SHOWN AS XXX W.O. DEPICT WALK-OUT STRUCTURES.
3. ALL LOTS SHALL MEET MINIMUM PAD REQUIREMENT AS SHOWN ON THE RECORDED PLAT.
4. LOT DIMENSIONS HAVE BEEN OMITTED ON THIS PLAN. REFER TO THE RECORDED PLAT FOR FINAL DIMENSION, EASEMENT, & BUILDING SETBACK INFORMATION.
5. HOUSE PAD ELEVATIONS DEPICTED WITH BOLD OUTLINES AND NOTED WITH THIS SYMBOL INDICATE THAT DEEP FOOTINGS OR DEEP FOUNDATIONS MAY BE REQUIRED.
6. A DRAINAGE PLAN HAS BEEN DEVELOPED FOR THIS SUBDIVISION AND IS ON FILE WITH THE CITY OF WICHITA, KANSAS. DRAINAGE INTENT SHALL REMAIN AS DEPICTED OR AS MODIFIED WITH THE APPROVAL OF THE CITY ENGINEER OF THE CITY OF WICHITA, KANSAS. NO OBSTRUCTIONS WHICH IMPEDE THE FLOW OF THIS DRAINAGE PLAN SHALL BE ALLOWED.
7. ALL ELEVATIONS SHOWN ARE CITY OF WICHITA DATUM.



BENCHMARK:
CITY OF WICHITA BENCHMARK DISC,
SW COR. OF THE INTERSECTION OF
MAIZE ROAD & PAWNEE.
44' S. OF C.
49' W. OF C.
12' E. OF FENCE
65' SW OF SEC. COR. IRON
ELEV. = 1322.52 CITY DATUM
1322.52 NGVD29

MINIMUM BUILDING PAD ELEVATIONS FOR LOWEST OPENING TO THE STRUCTURES		
LOT	BLOCK	ELEVATION
1-10	B	1327.4

NOTE: Pond proposed and approved in Southern Ridge & Southern Ridge 2nd Addition.

PLEASE RETURN MARKUP

- EMERGENCY ROUTE/ELEVATION
- DRAFTING
- QUESTIONABLE HAVING 2% GRADE TO BACKWARD
- TOO FLAT

SCHULTE, LAWRENCE & VINA
P.O. BOX 4
311 PIERCE
MAPLE HILL, KS 66507-0004