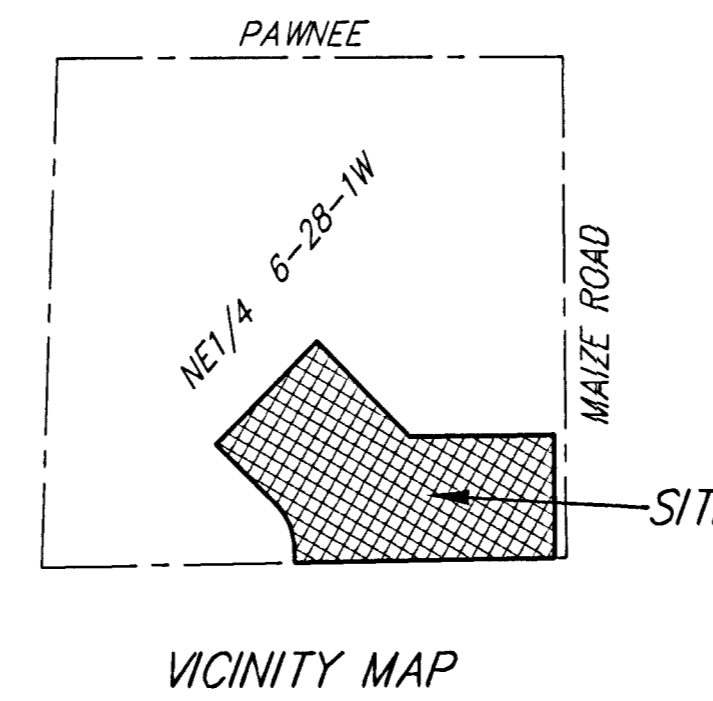


DRAINAGE PLAN

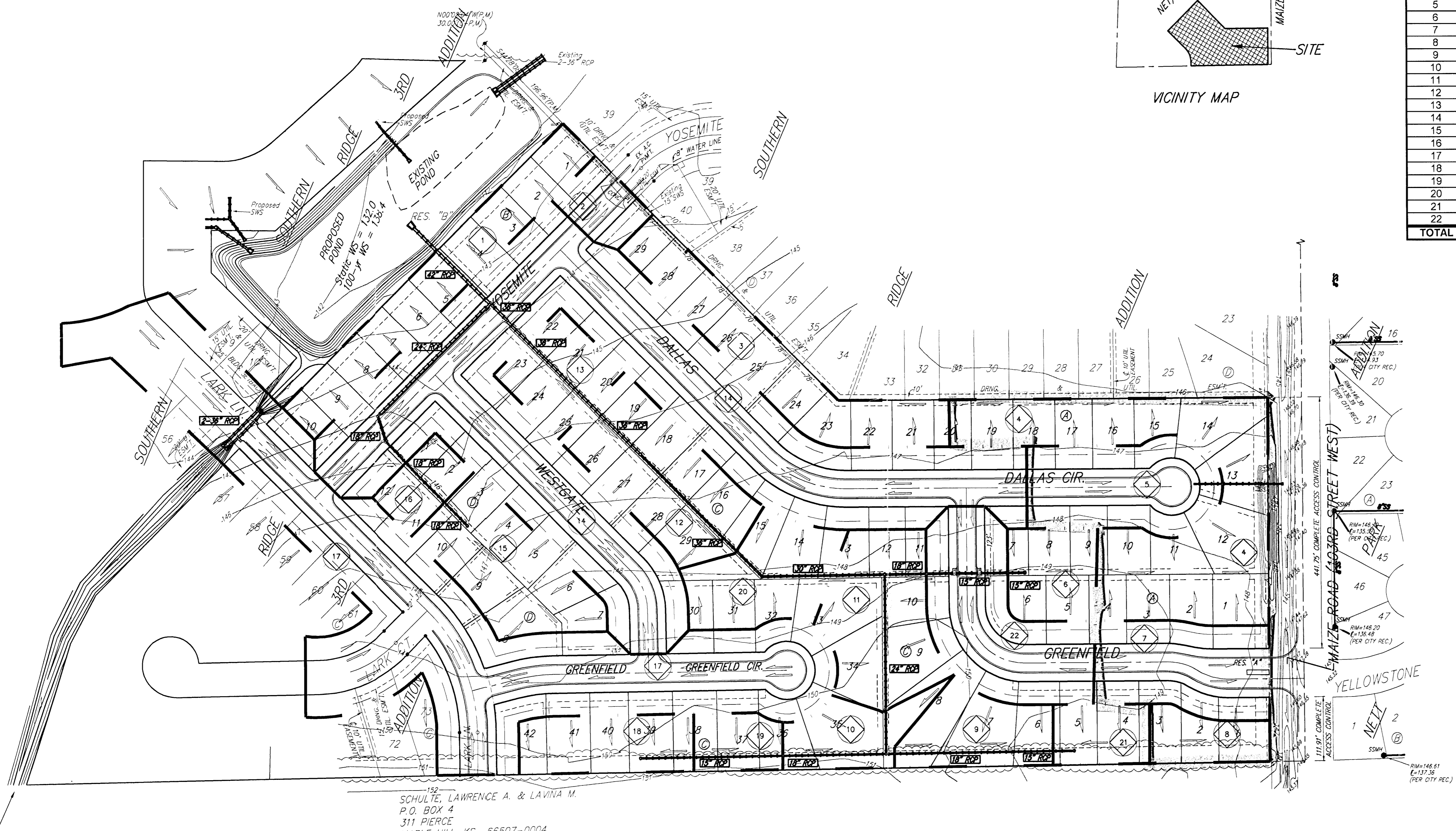
SOUTHERN RIDGE 4TH ADDITION

WICHITA, SEDGWICK COUNTY, KANSAS

Existing	2yr	5yr	100yr	Developed	2yr	5yr	100yr
Intensity	3.83	4.56	7.37	Intensity	3.83	4.56	7.37
Rational C	0.42	0.48	0.6	Rational C	0.5	0.55	0.7



Basin ID	Area acres	Existing Flowrates			Developed Flowrates		
		2-yr cfs	5-yr cfs	100-yr cfs	2-yr cfs	5-yr cfs	100-yr cfs
1	1.0	1.6	2.2	4.4	1.6	2.2	4.4
2	0.4	0.6	0.9	1.8	0.6	0.9	1.8
3	1.4	2.3	3.1	6.2	2.3	3.1	6.2
4	2.5	4.0	5.5	11	4.8	6.3	13
5	1.2	1.9	2.6	5.3	2.3	3.0	6.2
6	0.6	1.0	1.3	2.7	1.1	1.5	3.1
7	1.1	1.8	2.4	4.9	2.1	2.8	5.7
8	0.4	0.6	0.9	1.8	0.8	1.0	2.1
9	0.7	1.1	1.5	3.1	1.3	1.8	3.6
10	0.6	1.0	1.3	2.7	1.1	1.5	3.1
11	1.4	2.3	3.1	6.2	2.7	3.5	7
12	1.3	2.1	2.8	5.7	2.5	3.3	6.7
13	0.6	1.0	1.3	2.7	1.1	1.5	3.1
14	6.8	11	15	30	13	17	35
15	1.2	1.9	2.6	5.3	2.3	3.0	6.2
16	0.4	0.6	0.9	1.8	0.8	1.0	2.1
17	6.0	9.7	13	27	11	15	31
18	0.7	1.1	1.5	3.1	1.3	1.8	3.6
19	0.4	0.6	0.9	1.8	0.8	1.0	2.1
20	0.8	1.3	1.8	3.5	1.5	2.0	4.1
21	0.4	0.6	0.9	1.8	0.8	1.0	2.1
22	1.5	2.4	3.3	6.6	2.9	3.8	7.7
TOTAL	31.4	51	69	139	59	78	160



Offsite Drainage
 Area = 55 acres
 Soil Type C
 $T_c = 36 \text{ min}$
 $CN = 90$
 $Q_{100} = 206 \text{ cfs}$

152
 SCHULTE, LAWRENCE A. & LAVINA M.
 P.O. BOX 4
 311 PIERCE
 MAPLE HILL, KS 66507-0004