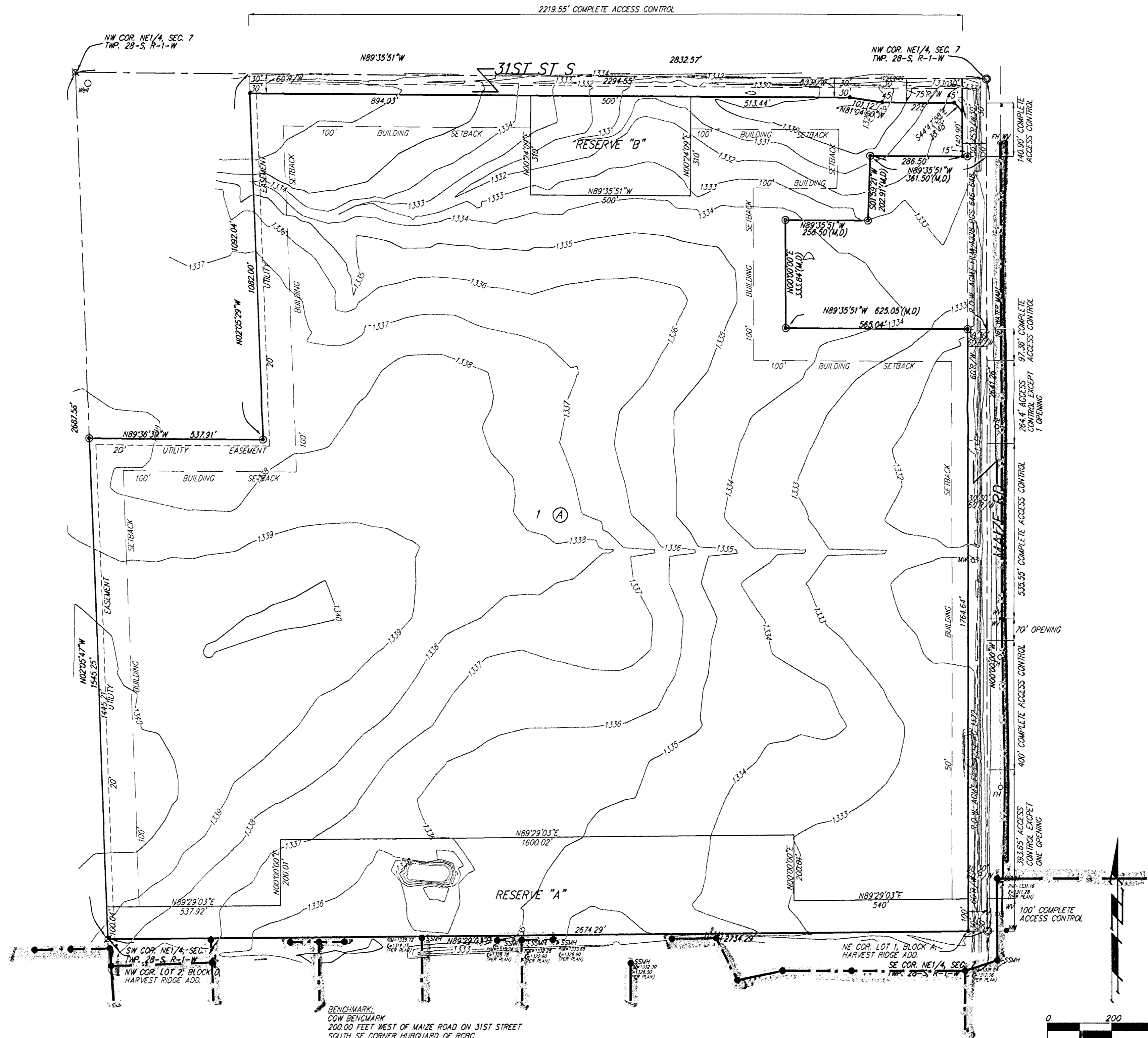


UTILITY PLAN

SKYWAY WEST ADDITION

WICHITA, SEDGWICK COUNTY, KANSAS



LEGEND

- Proposed Water Line (8" Unless Noted Otherwise)
- Existing Water Line (8" Unless Noted Otherwise)
- Proposed Sanitary Sewer Line (8" Unless Noted Otherwise)
- Existing Sanitary Sewer Line (8" Unless Noted Otherwise)
- Proposed Sanitary Sewer Manhole
- Proposed Fire Hydrant
- XXXX.XX Proposed Sanitary Sewer Flow

MINIMUM BUILDING PAD ELEVATIONS FOR LOWEST OPENING TO THE STRUCTURES

LOT	BLOCK	ELEVATION
		INDICED
1	A	1338.5

NOTE:
A drainage plan has been developed for this subdivision and is on file with the City of Wichita, Kansas. Drainage intent shall remain as depicted or as modified with the approval of the City Engineer of the City of Wichita, Kansas. No obstructions which impede the flow of this drainage plan shall be allowed.

- (M) = MEASURED
- (D) = DESCRIBED
- (P) = PLATTED
- (C) = CALCULATED
- ⊕ = #4 REBAR W/ "BAUGHMAN" CAP (FOUND)
- ⊙ = #4 REBAR W/ "BAUGHMAN" CAP (SE1)
- ⊗ = #4 REBAR W/ "ARMSTRONG" CAP
- ⊘ = 1" IRON (FOUND)
- ⊚ = 3/4" IRON (FOUND)
- ⊙ = #4 REBAR (FOUND)

0 200 400
DATE OF PREPARATION: 23 MAY 2007

SKYWAY WEST ADDITION

23 MAY 2007

Baughman Company, P.A.
315 Ellis St., Wichita, KS 67211 P 316.262.7171 F 316.262.0149
ENGINEERING | SURVEYING | PLANNING | LANDSCAPE ARCHITECTURE

E:\PLAT\SKYWAYWESTADDITION\DWG\SKYWAYWESTE.DWG.RKR