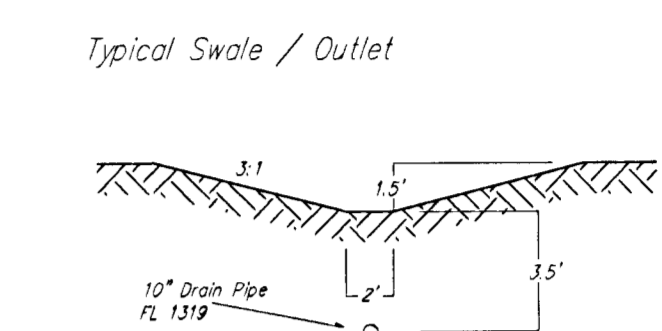
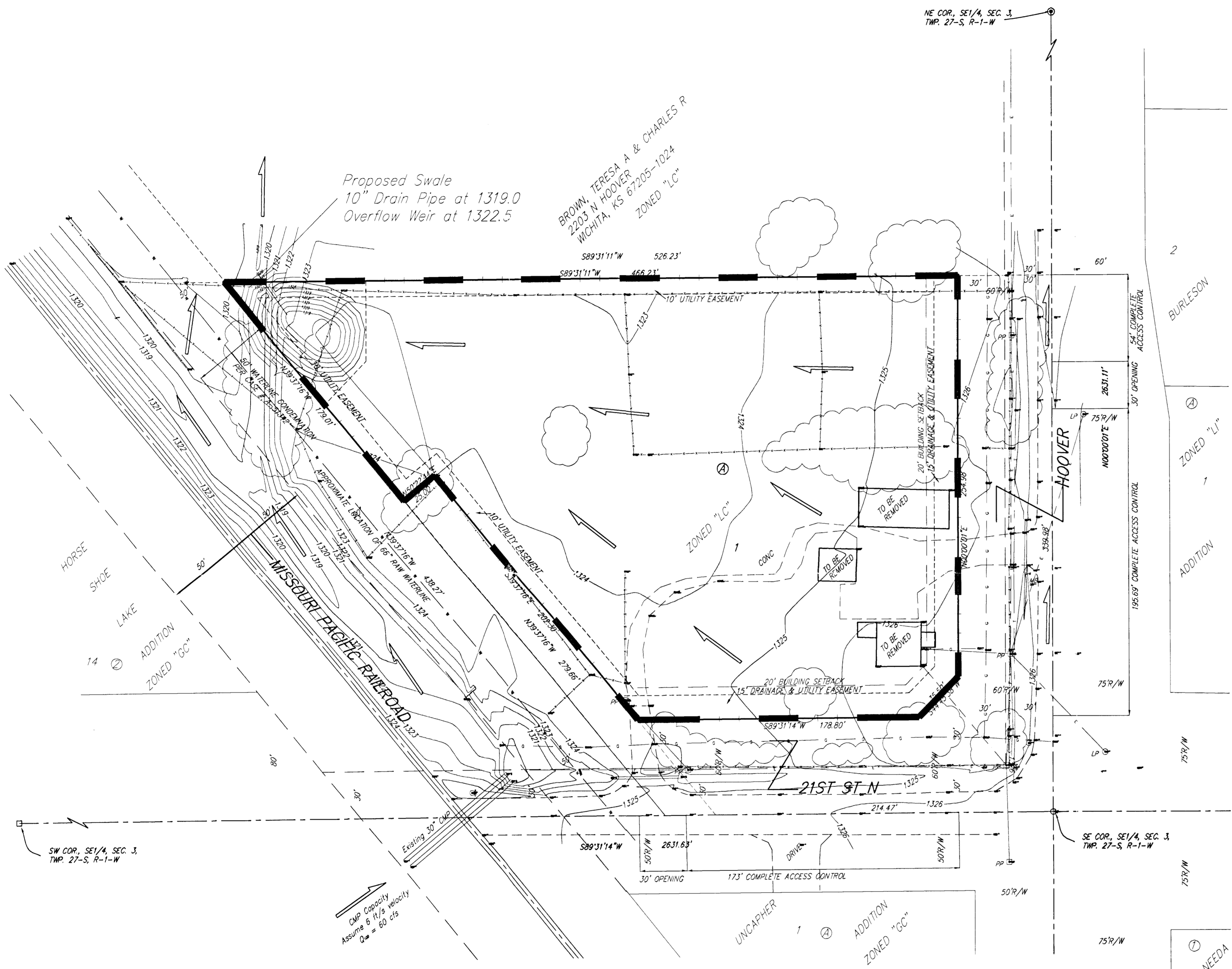


DRAINAGE PLAN

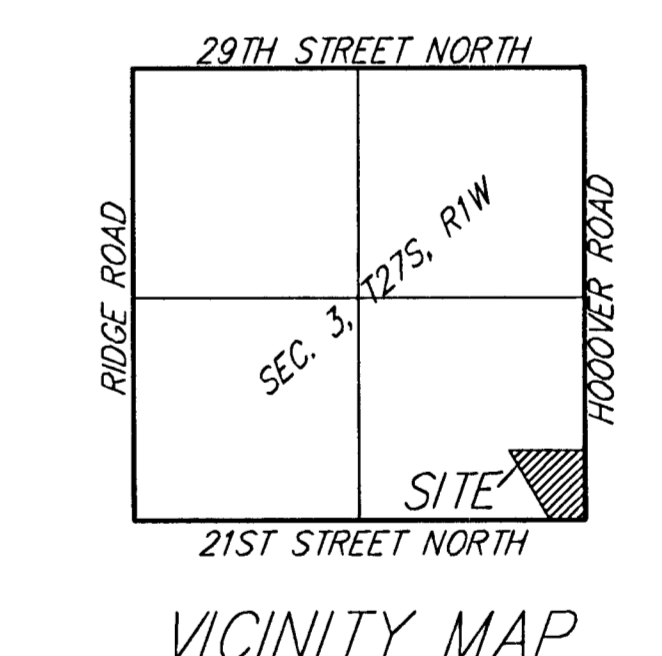
SLATE CREEK

AN ADDITION TO WICHITA, SEDGWICK COUNTY, KANSAS



DEVELOPED CONDITIONS
 Area = 2.1 acres
 CN = 84
 Tc = 15 min
 Q₂ = 5 cfs
 Q₅ = 7 cfs
 Q₁₀₀ = 15 cfs

EXISTING CONDITIONS
 Area = 2.1 acres
 CN = 70
 Tc = 15 min
 Q₂ = 2.4 cfs
 Q₅ = 4.2 cfs
 Q₁₀₀ = 11 cfs



POND DISCHARGE SUMMARY

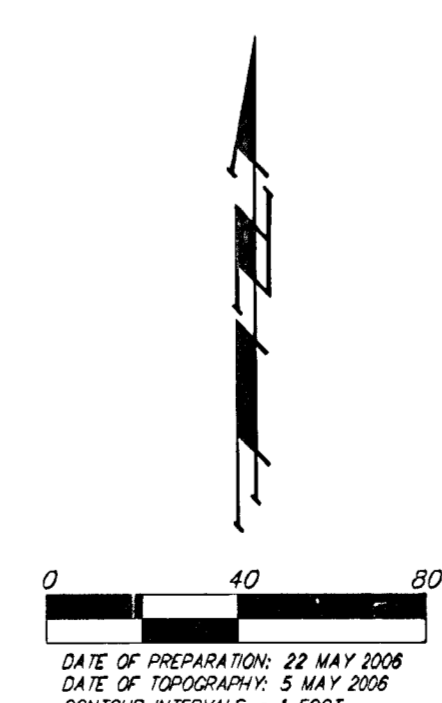
Q ₂ in = 4.9 cfs	Q ₂ out = 2.3 cfs
Q ₅ in = 7.1 cfs	Q ₅ out = 3.7 cfs
Q ₁₀₀ in = 15 cfs	Q ₁₀₀ out = 11 cfs
Elev ₂ = 1320.4	
Elev ₅ = 1321.5	
Elev ₁₀₀ = 1323.5	

- = #4 REBAR W/ "BAUGHMAN" CAP (SET)
- = #4 REBAR W/ "BAUGHMAN" CAP (FOUND)
- = "HILT" NAIL IN ASPHALT OVER CENTER OF STONE, (1.5" DEEP), W/ #4 REBAR ON WEST SIDE OF STONE (FOUND)

- (M) = MEASURED
- (P) = PLATTED
- (C-P) = CALCULATED PER PLATTED INFO

NOTE:
 A master grading plan for drainage has been developed for this subdivision and is on file with the City of Wichita, Kansas. All drainage easements, right-of-ways, or reserves shall remain at established grades or as modified with the approval of the City Engineer of the City of Wichita, Kansas. No obstructions which impede the flow of this drainage system be allowed.

BENCHMARK:
 City Disc - 48.5' W & 28' N, of C of
 21st Street North & Hoover St.
 Elev. = 1328.47 NGVD29



DATE OF PREPARATION: 22 MAY 2006
 DATE OF TOPOGRAPHY: 5 MAY 2006
 CONTOUR INTERVALS = 1 FOOT

CONTRACT PURCHASER:
 SLATER HOLDINGS, LLC
 8200 E. 34TH ST N.
 SUITE 1601
 WICHITA, KANSAS 67226
 620-9600

REVISED TX 15 MAY 2006
 22 MAY 2006

Baughman Company, P.A.
 315 Ellis St. Wichita, KS 67211 P 316-262-7271 F 316-262-0149
 ENGINEERING | SURVEYING | PLANNING | LANDSCAPE ARCHITECTURE
 F:\HYDRO\Projects\SlateCreekAddition\SLATERP_drainplan.dwg