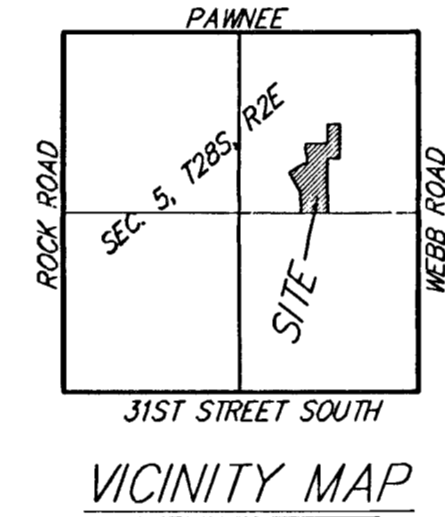
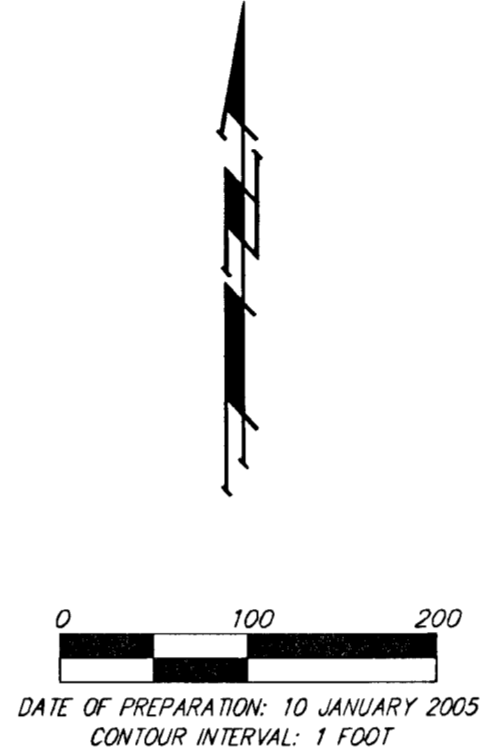
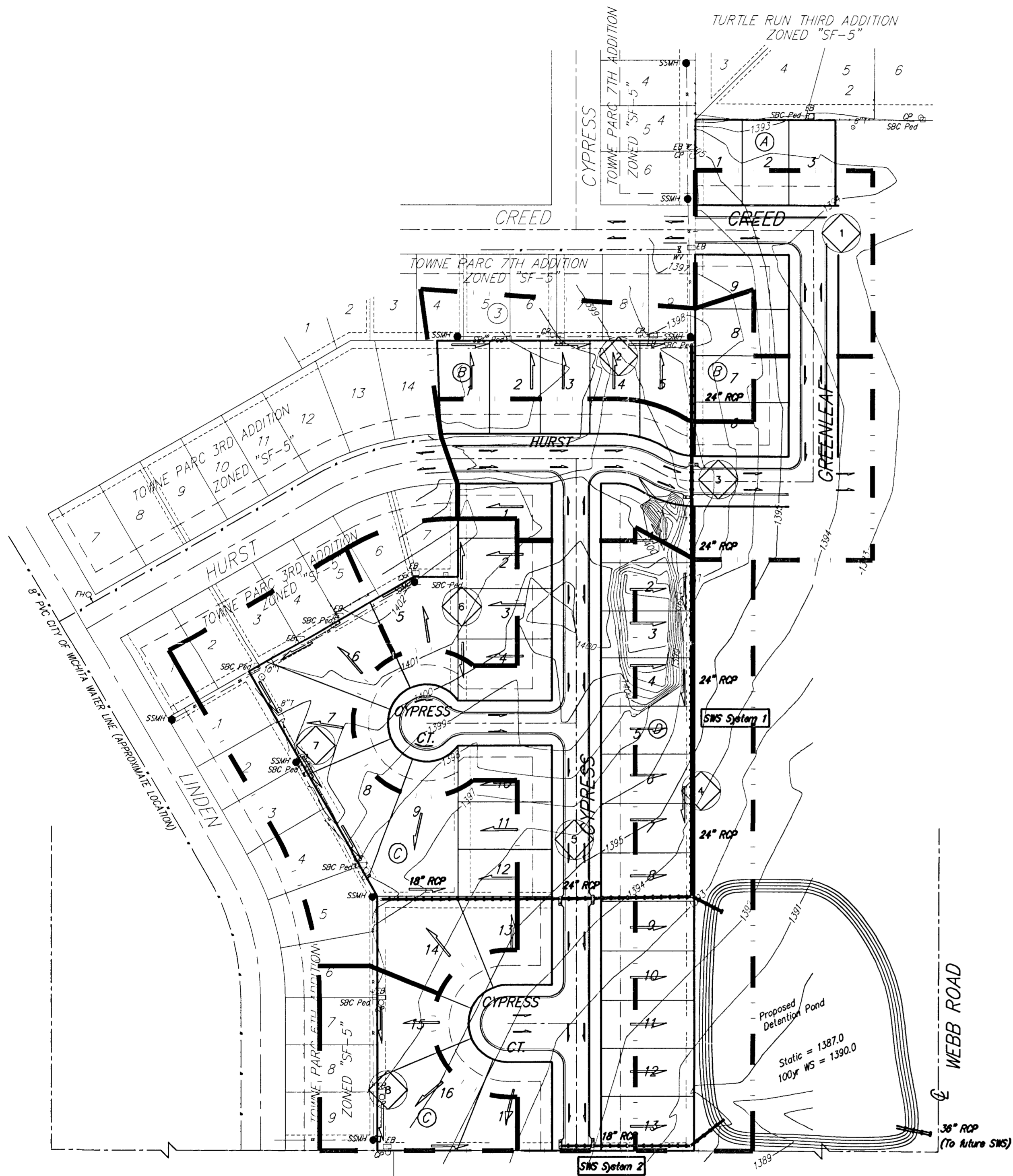


DRAINAGE PLAN

TOWNE PARC 8TH ADDITION

WICHITA, SEDGWICK COUNTY, KANSAS



TOWNE PARC 5TH ADDITION
ZONED "SF-5"

BENCHMARK:
 WEBB ROAD AND 0.5 MILES (0.810 km)
 SOUTH OF PAWNEE
 COW BENCHMARK, EAST RIGHT-OF-WAY
 4.50 FT. (1.402 m) NORTH OF NORTH FACE OF POWER POLE
 31.80 FT. (9.693 m) EAST OF CENTERLINE OF WEBB RD.
 21.50 FT. (6.553 m) SOUTH OF ROBC CORNER
 71.50 FT. (21.793 m) EAST-SOUTHEAST OF 1ST POWER POLE NORTH OF MESR DRIVEWAY.
 ELEV. = 1384.18 NGVD29
 ELEV. = 196.78 CITY DATUM

Existing	2yr	5yr	100yr	Developed	2yr	5yr	100yr
Intensity	3.83	4.56	7.37	Intensity	3.83	4.56	7.37
Rational C	0.45	0.5	0.8	Rational C	0.53	0.56	0.7

Basin ID	Area acres	Existing Flowrates			Developed Flowrates		
		2-yr cfs	5-yr cfs	100-yr cfs	2-yr cfs	5-yr cfs	100-yr cfs
1	1.1	1.9	2.5	4.9	2.2	2.8	5.7
2	1.3	2.2	3.0	5.7	2.6	3.3	6.7
3	2.5	4.3	5.7	11	5.1	6.4	13
4	2.7	4.7	6.2	12	5.5	6.9	14
5	3.9	6.7	8.9	17	7.9	10	20
6	0.9	1.4	1.8	3.5	1.6	2.0	4.1
7	2.8	4.8	6.4	12	5.7	7.2	14
8	1.0	1.7	2.3	4.4	2.0	2.6	5.2
TOTAL	16.1	28	37	71	33	41	83

10 JANUARY 2005

Baughman Company, P.A.
 315 Ellis St. Wichita, KS 67211 P 316262-7171 F 316262-0149
ENGINEERING | SURVEYING | PLANNING | LANDSCAPE ARCHITECTURE
F:\HYDRO\Projects\TowneParc8th\TowneParc8P_drainplan.dwg