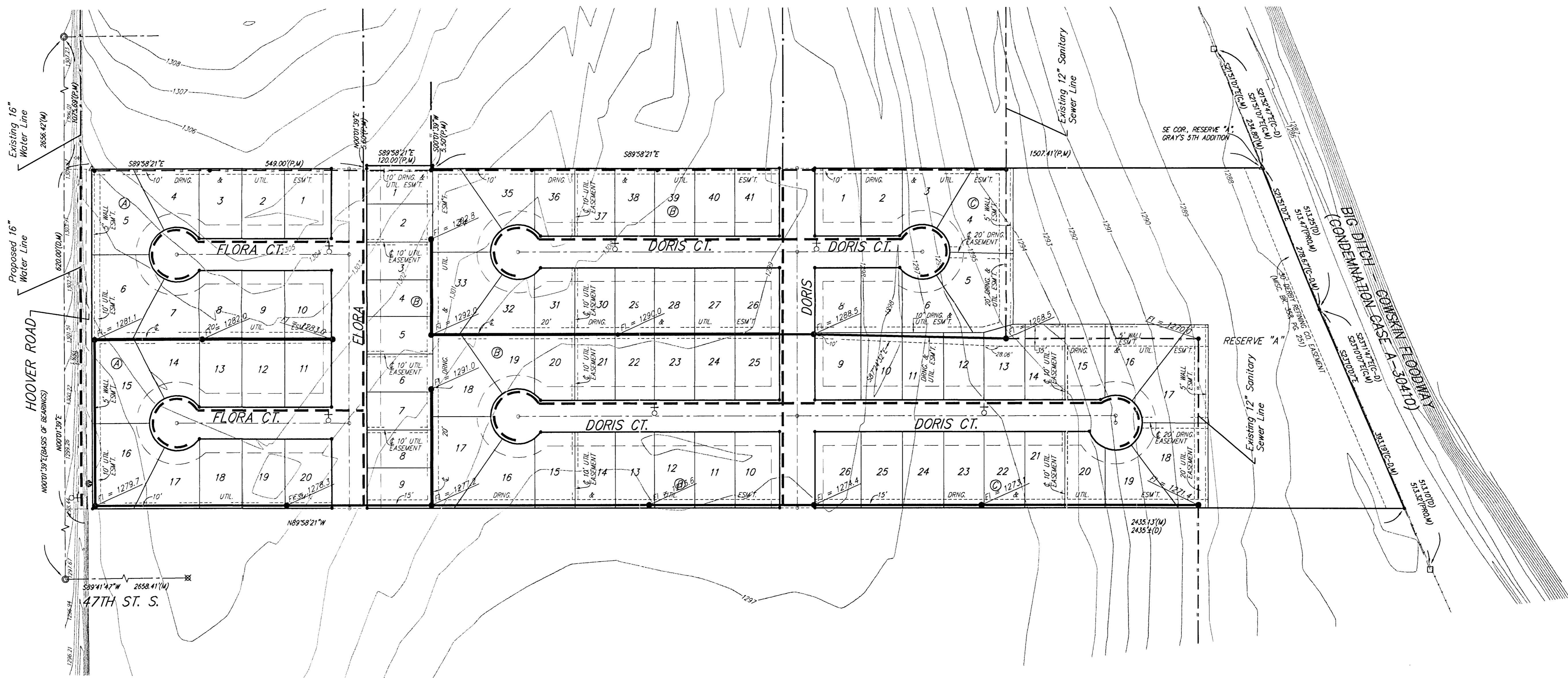
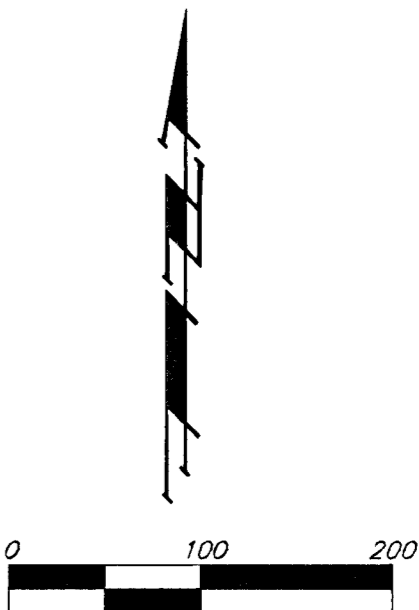


# UTILITY PLAN TRINITY POINT WICHITA, SEDGWICK COUNTY, KANSAS



**LEGEND**

- Proposed Water Line  
(8" Unless Noted Otherwise)
- Existing Water Line  
(8" Unless Noted Otherwise)
- Proposed Sanitary Sewer Line  
(8" Unless Noted Otherwise)
- Existing Sanitary Sewer Line  
(8" Unless Noted Otherwise)
- Proposed Sanitary Sewer Manhole
- ♀ Proposed Fire Hydrant
- XXXXXX Proposed Sanitary Sewer Flow