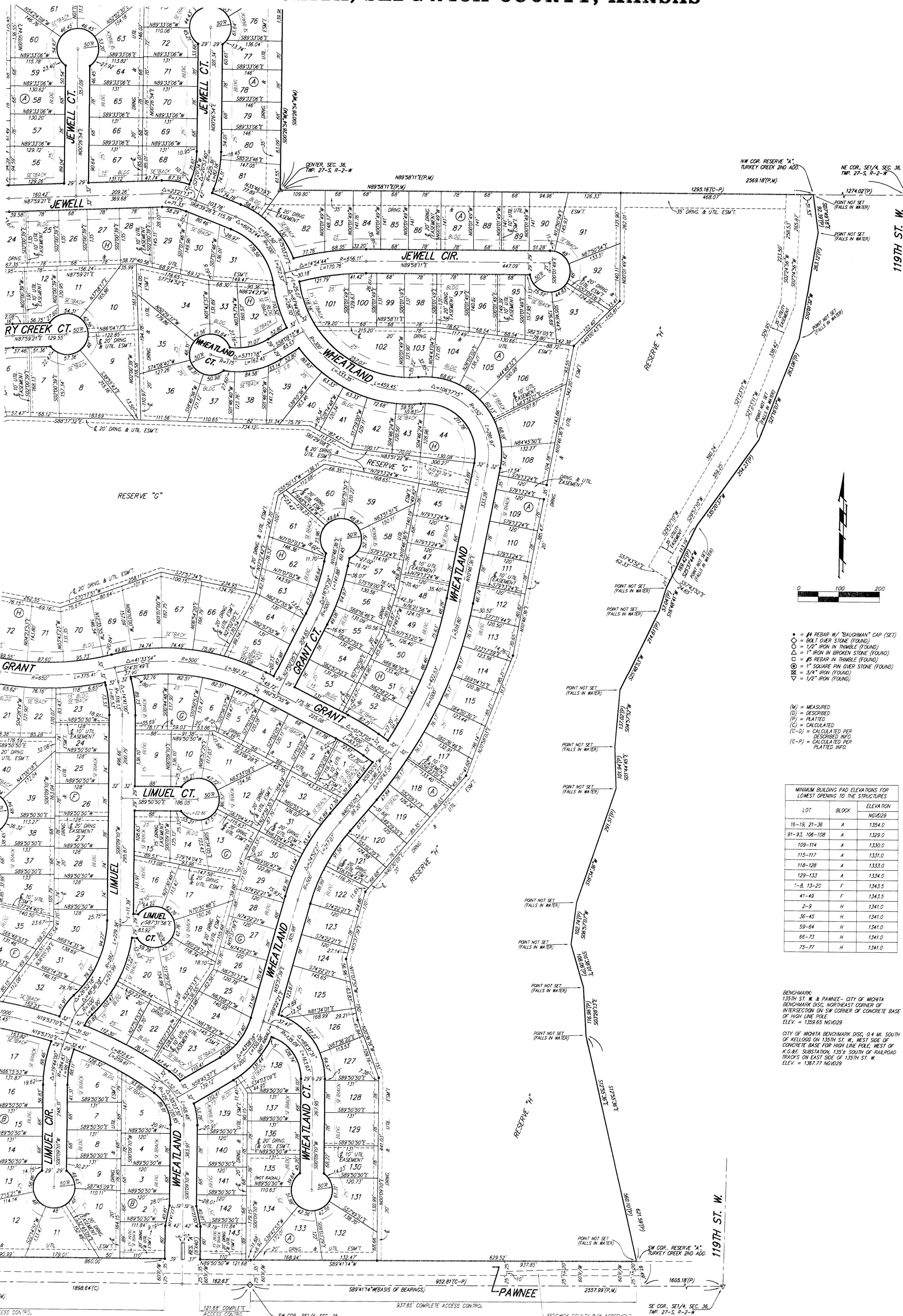


TURKEY CREEK 3RD ADDITION

WICHITA, SEDGWICK COUNTY, KANSAS



- #4 REBAR W/ "BAUGHMAN" CAP (SET)
 - ◊ BOLT OVER STONE (FOUND)
 - 1/2" IRON IN TRAMPLE (FOUND)
 - ◻ 1" IRON IN BROKEN STONE (FOUND)
 - ◻ #5 REBAR IN TRAMPLE (FOUND)
 - ◻ 1" SQUARE PIN OVER STONE (FOUND)
 - ◻ 3/4" IRON (FOUND)
 - ◻ 1/2" IRON (FOUND)
- (M) = MEASURED
 (D) = DESCRIBED
 (P) = PLATTED
 (C) = CALCULATED
 (C-D) = CALCULATED PER DESCRIBED MEASUREMENTS
 (C-P) = CALCULATED PER PLATTED INFO

LOT	BLOCK	ELEVATION
16-19, 21-36	A	1354.0
91-92, 106-109	A	1329.0
109-114	A	1330.0
115-117	A	1331.0
118-120	A	1333.0
129-133	A	1334.0
1-8, 13-20	F	1343.5
41-49	F	1343.5
2-9	H	1341.0
36-45	H	1341.0
59-64	H	1341.0
66-73	H	1341.0
75-77	H	1341.0

BENCHMARK:
 135TH ST. W. & PANTEE - CITY OF WICHITA
 BENCHMARK DISC. NORTHEAST CORNER OF CONCRETE BASE OF HIGH LINE POLE, WEST OF K.G.R.E. SUBSTATION, 135+ SOUTH OF RAILROAD TRACKS ON EAST SIDE OF 135TH ST. W.
 ELEV. = 1358.65 NGVD29

CITY OF WICHITA BENCHMARK DISC. 0.4 MI. SOUTH OF KILLBUCK ON 135TH ST. W. WEST SIDE OF CONCRETE BASE FOR HIGH LINE POLE, WEST OF K.G.R.E. SUBSTATION, 135+ SOUTH OF RAILROAD TRACKS ON EAST SIDE OF 135TH ST. W.
 ELEV. = 1367.77 NGVD29

NOTE:
 A master grading plan for drainage has been developed for this subdivision and is on file with the City of Wichita, Kansas. All drainage easements, 10' wide, or reserves that remain at subdivision closing shall be as modified with the approval of the City Engineer of the City of Wichita, Kansas. No obstructions which impede the flow of this drainage system shall be placed.