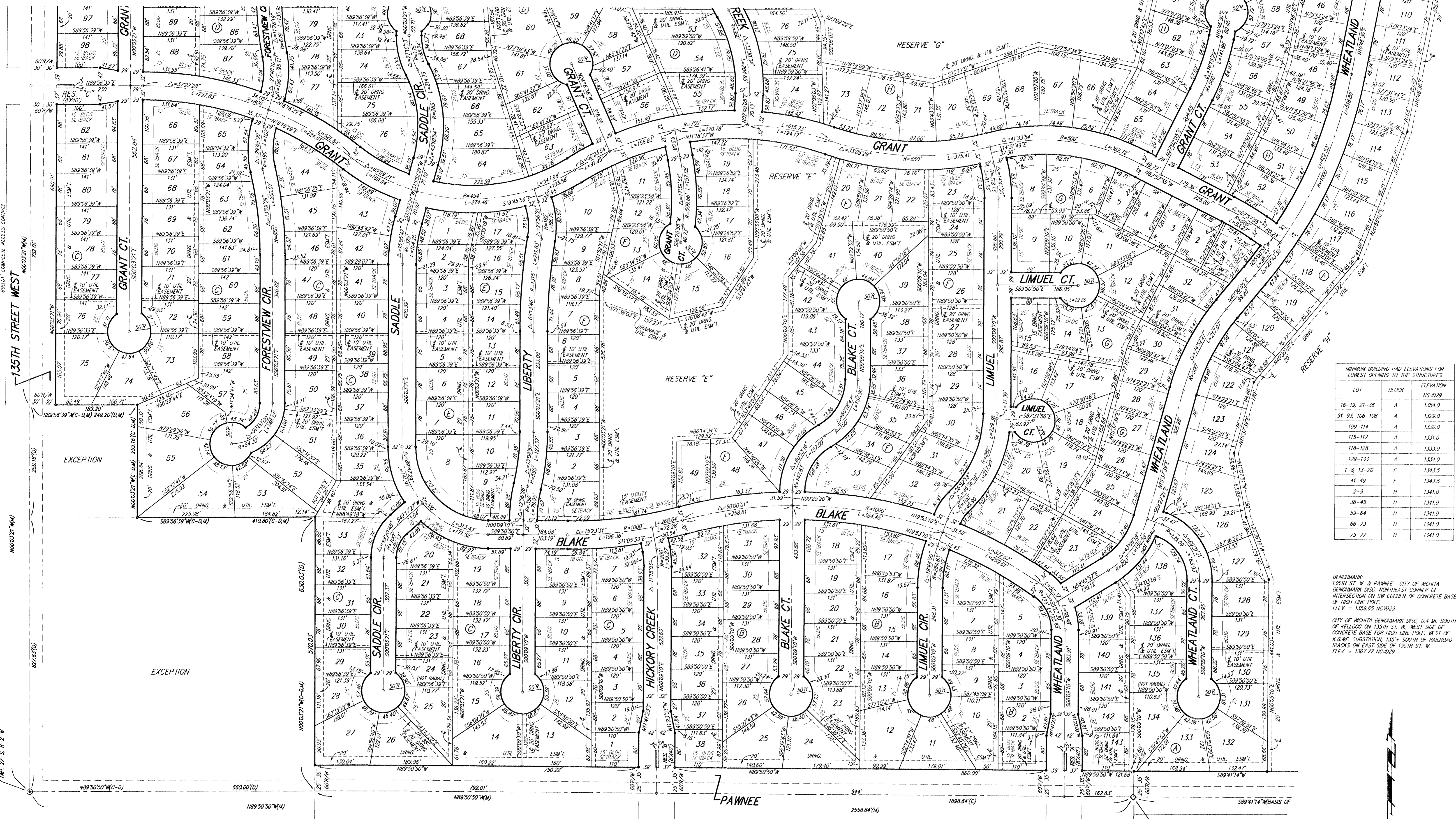


TURKEY CREEK 3RD ADDITION

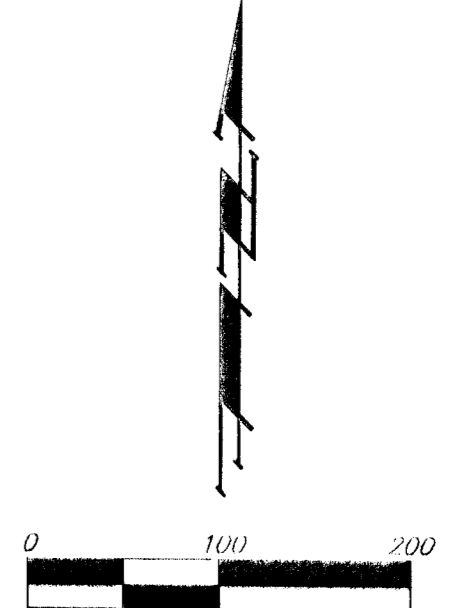
WICHITA, SEDGWICK COUNTY, KANSAS



LOT	BLOCK	ELEVATION
16-19, 21-26	A	1,534.0
91-93, 106-108	A	1,529.0
109-114	A	1,530.0
115-117	A	1,531.0
118-128	A	1,533.0
129-133	A	1,534.0
1-8, 13-20	F	1,543.5
41-49	F	1,543.5
2-9	H	1,541.0
36-45	H	1,541.0
59-64	H	1,541.0
66-73	H	1,541.0
75-77	H	1,541.0

BENCHMARK:
 135TH ST. W. & PAWNEE - CITY OF WICHITA
 BENCHMARK DISC, NORTH-EAST CORNER OF
 INTERSECTION ON SW CORNER OF CONCRETE BASE
 OF HIGH LINE POLE.
 ELEV. = 1,538.85 MVD029

CITY OF WICHITA BENCHMARK DISC: 0.4 MI. SOUTH
 OF KELLWOOD ON 135TH ST. W. WEST SIDE OF
 CONCRETE BASE FOR HIGH LINE POLE. WEST OF
 K.G.B.E. SUBSTATION, 1.515' SOUTH OF RAILROAD
 TRACKS ON EAST SIDE OF 135TH ST. W.
 ELEV. = 1,587.77 MVD029



NOTE:
 A master grading plan for drainage has been developed for this subdivision
 and is on file with the City of Wichita, Kansas. All drainage easements,
 right-of-ways, or reserves shall remain at established grades or as
 modified with the approval of the City Engineer of the City of Wichita,
 Kansas. No obstructions which impede the flow of this drainage system
 shall be allowed.

- (M) = MEASURED
- (D) = DESCRIBED
- (P) = PLATTED
- (C) = CALCULATED
- (C-D) = CALCULATED PER DESCRIBED INFO.
- (C-P) = CALCULATED PER PLATTED INFO.
- ⊙ = #4 REBAR W/ "BAUCHIMAN" CAP (SET)
- ⊙ = BOLT OVER STONE (FOUND)
- ⊙ = 1/2" IRON IN THUMB (FOUND)
- ⊙ = 1" IRON IN THUMB (FOUND)
- ⊙ = #4 REBAR IN THUMB (FOUND)
- ⊙ = 1" SQUARE PIN OVER STONE (FOUND)
- ⊙ = 3/4" IRON (FOUND)
- ⊙ = 1/2" IRON (FOUND)