

21ST STREET KIDS AND FAMILY EMPOWERMENT

AN ADDITION TO WICHITA, SEDGWICK COUNTY, KANSAS

SCALE: 1" = 50'
 DATE OF SURVEY: JUNE 2005
 = 1/2" REBAR W/PEC CAP UNLESS OTHERWISE NOTED

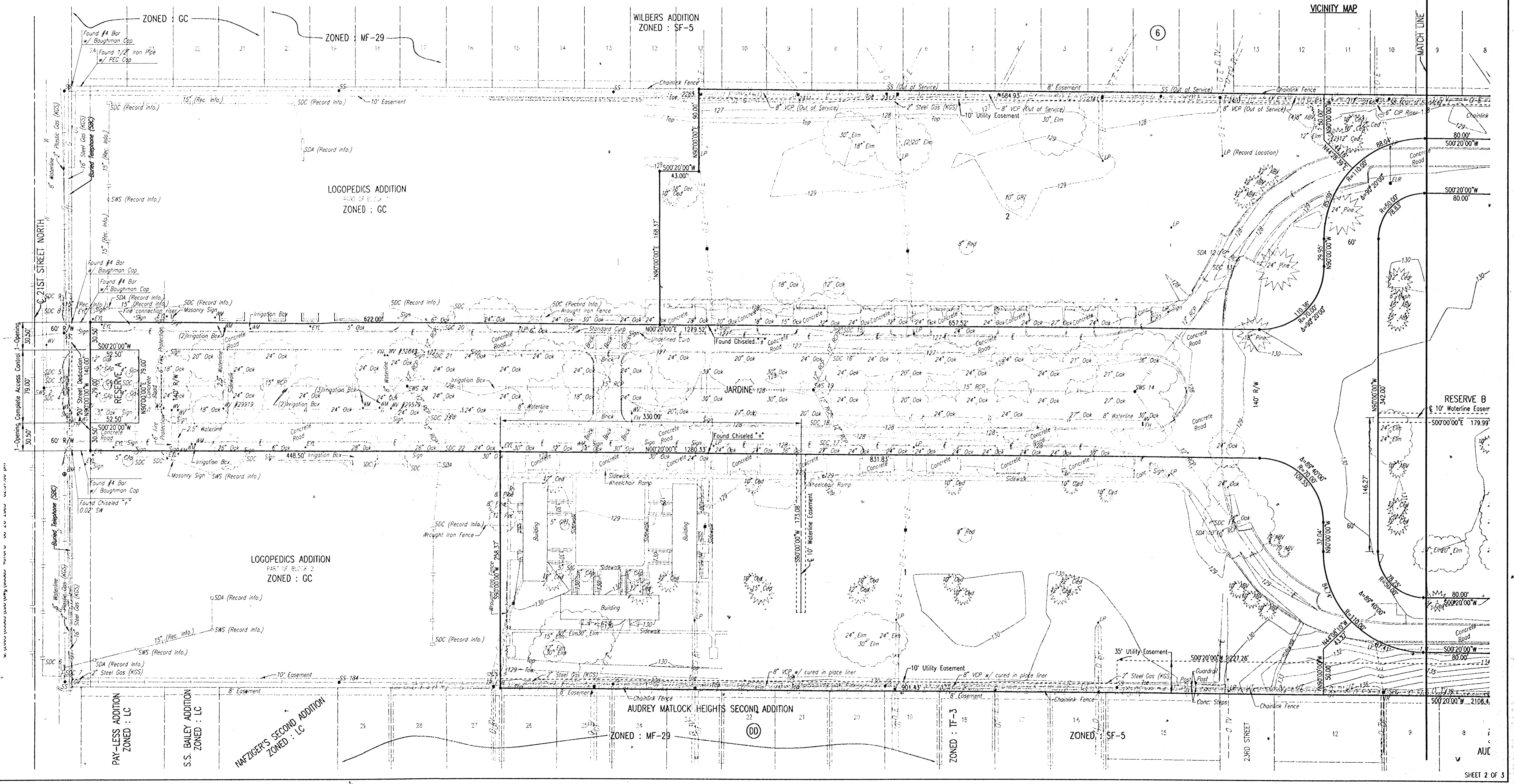
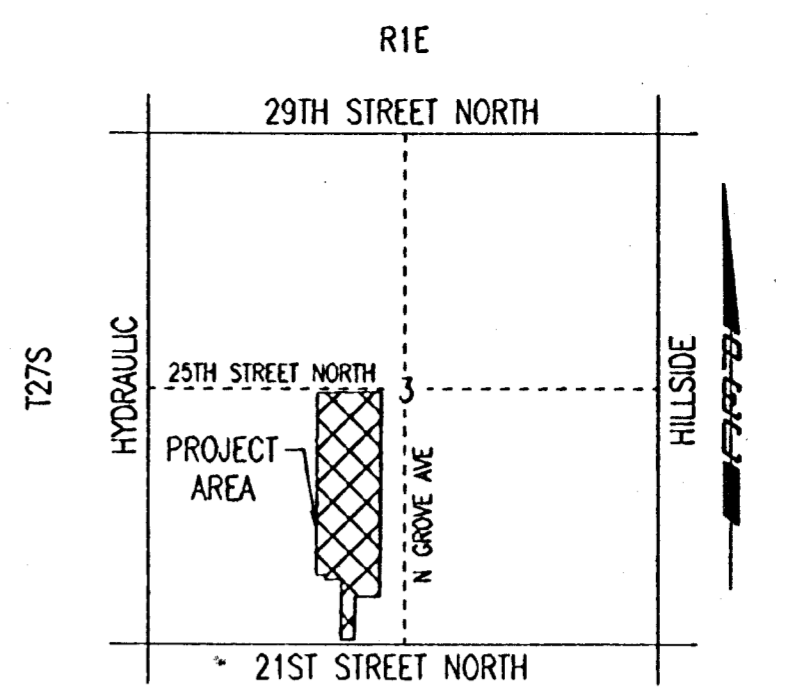
BENCHMARKS:
 BM #1:
 CHISELED "I" ON BACK OF CURB ON THE NORTH SIDE OF 21ST ST. N. ± 50'
 EAST OF JARDINE NORTH BOUND. ELEV. = 127.54 CITY DATUM

BM #2:
 3" T POST 0.5' BELOW GROUND CENTERED BETWEEN JARDINE NORTH AND SOUTH
 BOUND ± 60' NORTH OF CROSS OVER ROAD ± 620' NORTH OF 21ST ST.
 NORTH ELEV. = 127.275 CITY DATUM

BM #3:
 T POST ± 5' BELOW SURFACE, ± 20' NORTH OF NORTH BACK OF CURB 23RD ST.
 ± JARDINE. ELEV. = 128.630 CITY DATUM

BM #4:
 T POST BELOW SURFACE, ± 20' NORTH OF NORTH BACK OF CURB OF 24TH ST.
 ± JARDINE EXTENDED. ELEV. = 130.265 CITY DATUM

BM #5:
 CHISELED "I" TOP BACK OF CURB AT N.E. CORNER OF MADISON & 25TH ST. N.
 NORTH CURB RETURN AT NORTH CORNER OF WHEEL CHAIR RAMP.
 ELEV. = 133.115 CITY DATUM



USNR: RMH OPR: JLS SCALE: 1"=50.00
 01/2005/05389/IDD/05389-01e Step Pg 2 08-29-2005 08:20:00 am