

Legend:

- Building Setback SB
- Utility Easement UE
- Drainage Easement DE
- Centerline CL
- Iron Bar w/POE cap fnd. ●
- Iron Bar w/MKEC cap fnd. ○
- Iron Bar w/POE cap set □
- Sanitary Sewer riser —○—
- Sanitary Sewer Manhole ⊕
- Fire Hydrant ⊕
- Waterline —W—

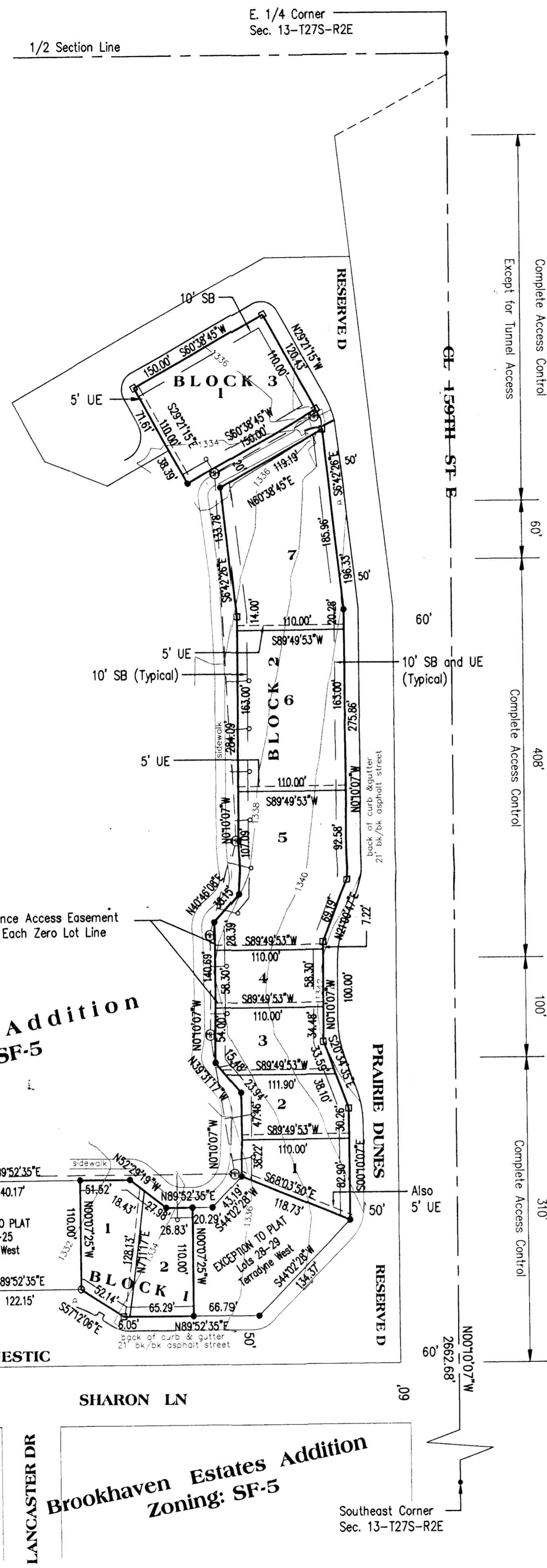
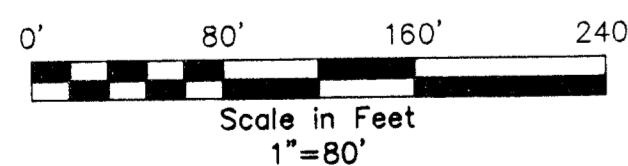
Notes:
 Topographic survey completed November 2009.
 Sanitary sewer risers are shown from record information.

Lots 1-2, Block 1
 Lots 1-4, Block 2
 Have zero sideyard setbacks.

Benchmarks:

- Square cut on top of curb at N.W. corner concrete parking lot at S.W. corner Terradyne 2nd Addition.
 Elev. 1332.42 (NGVD 1929)
- Square cut in center of south end of concrete walk at information building N. side terradyne at N.E. corner Terradyne 2nd Addition.
 Elev. 1341.06 (NGVD 1929)

FINAL TRACING RECD
 5-12-10



STATE OF KANSAS)
) SS
 COUNTY OF SEDGWICK)

I, William P. Fox, being a duly licensed Land Surveyor in said County and State, do hereby certify that I have been in responsible charge of surveying and platting "TERRADYNE WEST 3RD ADDITION" to Wichita, Sedgwick County, Kansas, being described as follows:
 A re-plot of Lots 26, 27 and 30 through 47 all in Block 2 of Terradyne West an Addition to Wichita, Sedgwick County, Kansas. Existing public easements are hereby vacated to conform to this plat by virtue of K.S.A. 12-512(b). The accompanying plat is a true and correct exhibit of property surveyed.
 Dated this 5th day of March, 2010.



William P. Fox, L.S. 799
 Poe and Associates, Inc.



POE & ASSOCIATES, INC.
 CONSULTING ENGINEERS
 5940 E. Central, Suite 200 • Wichita, KS 67208-4242
 Phone 316.685.4114 • FAX 316.685.4444

KNOW ALL MEN BY THESE PRESENTS:

That we, the undersigned, have caused the land described in the Surveyor's Certificate to be platted into Lots and Blocks. Easements are hereby granted as indicated for the construction and maintenance of drainage & utilities. A drainage plan has been developed for this addition. All drainage easements shall remain at established grades or as modified with the approval of the applicable City or County Engineer, and remain unobstructed to allow for the conveyance of stormwater. The 5' maintenance access easements as shown are hereby platted for the purpose of pedestrian emergency access, construction, maintenance, the extension of the footing and a 2-foot overhang of the structure on the adjacent lot. All abutters' rights of access to or from 159th Street East over and across the East line of reserve D as indicated on the plat map are hereby granted to the appropriate governing body.

Terradyne Residential, LLC

Craig Smith
 Craig Smith, Managing Member

STATE OF KANSAS)
) SS
 COUNTY OF SEDGWICK)

This instrument was acknowledged before me on this _____ day of _____, 2010, by Craig Smith, Managing Member of Terradyne Residential, LLC.

Notary Public _____

My Appointment Expires: _____

KNOW ALL MEN BY THESE PRESENTS: SS

That Fidelity Bank, fsb., holders of a mortgage on the property described in the Surveyor's certificate do hereby consent to this plat of TERRADYNE WEST 3RD ADDITION.

Fidelity Bank, fsb.

Michael E. Smith
 Michael E. Smith, Sr. Vice President

STATE OF KANSAS)
) SS
 COUNTY OF SEDGWICK)

This instrument was acknowledged before me on this, 12th day of May, 2010, by Michael E. Smith, Sr. Vice President of Fidelity Bank, fsb.



Lori Richardson
 Notary Public

My Appointment Expires: 1-11-2011

This plat of TERRADYNE WEST 3RD ADDITION to Wichita, Sedgwick County, Kansas has been submitted to and approved by this WICHITA-SEDGWICK COUNTY METROPOLITAN AREA PLANNING COMMISSION, Wichita, Kansas.

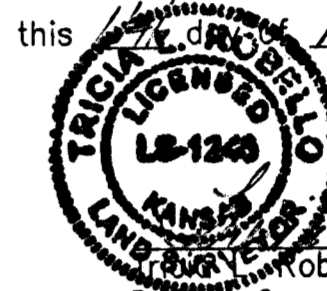
Dated this _____ day of _____, 2010.

WICHITA SEDGWICK COUNTY
 METROPOLITAN AREA PLANNING COMMISSION

G. Nelson Van Fleet, Chairman

John L. Schlegel, Secretary

Reviewed in accordance with K.S.A. 58-2005 on this March, 2010.



Karen Sublett
 Karen Sublett, L.S. #1246
 Deputy County Surveyor
 Sedgwick County, Kansas

This plat approved and all dedications shown hereon accepted by the City Council of the City of Wichita, Kansas, this, _____ day of _____, 2010.

At the Direction of the City Council

Carl Brewer, Mayor

Karen Sublett, City Clerk

Entered on transfer record this, _____ day of _____, 2010.

Kelly B. Arnold, County Clerk

STATE OF KANSAS)
) SS
 COUNTY OF SEDGWICK)

This is to certify that this plat has been filed for record in the office of the Register of Deeds, this _____ day of _____, 2010 at _____ o'clock ____M; and is duly recorded.

Bill Meek, Register of Deeds

Tonya Buckingham, Deputy

One Step Final Plat

TERRADYNE WEST 3RD ADDITION

an Addition to Wichita, Sedgwick County, Kansas