

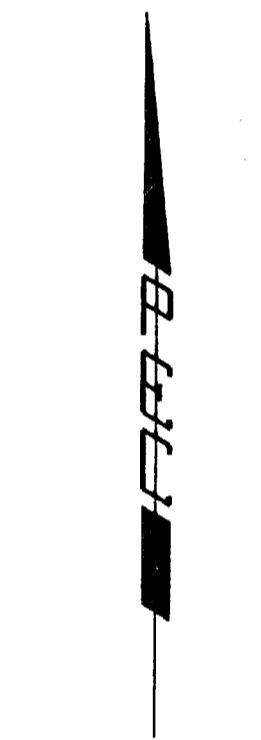
DRAINAGE PLAN 2-28-94

BROOKHAVEN ESTATES 2ND ADDITION TO SEDGWICK COUNTY, KANSAS

OWNERS: EAST SIDE BAPTIST CHURCH OF WICHITA, INC.
c/o ROBERT E. REID
15200 E. CENTRAL
WICHITA, KANSAS 67230

SOCORA VILLAGE COMPANY
c/o LARRY A. CHAMBERS
104 S. BROADWAY
WICHITA, KANSAS 67202-4165

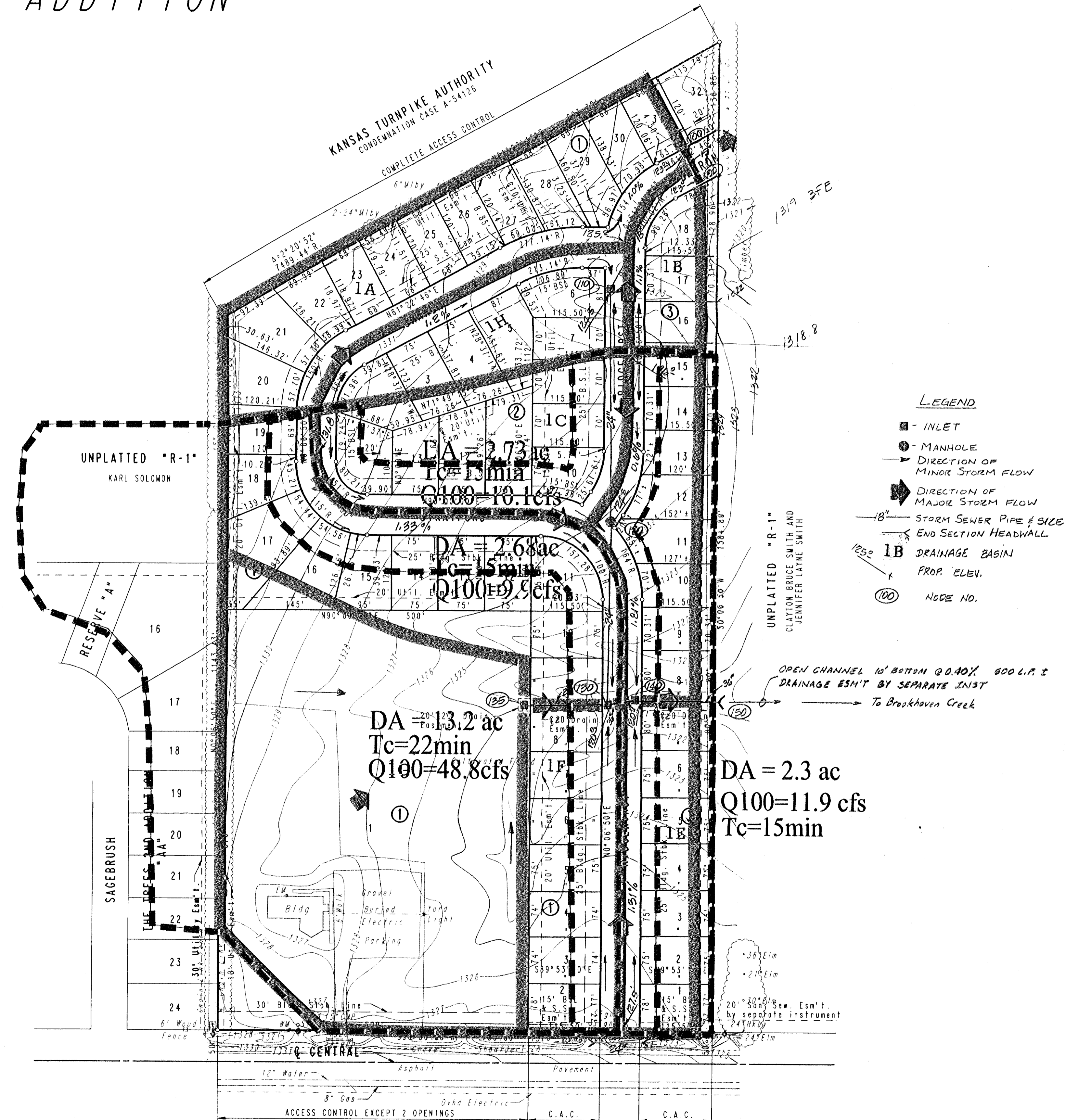
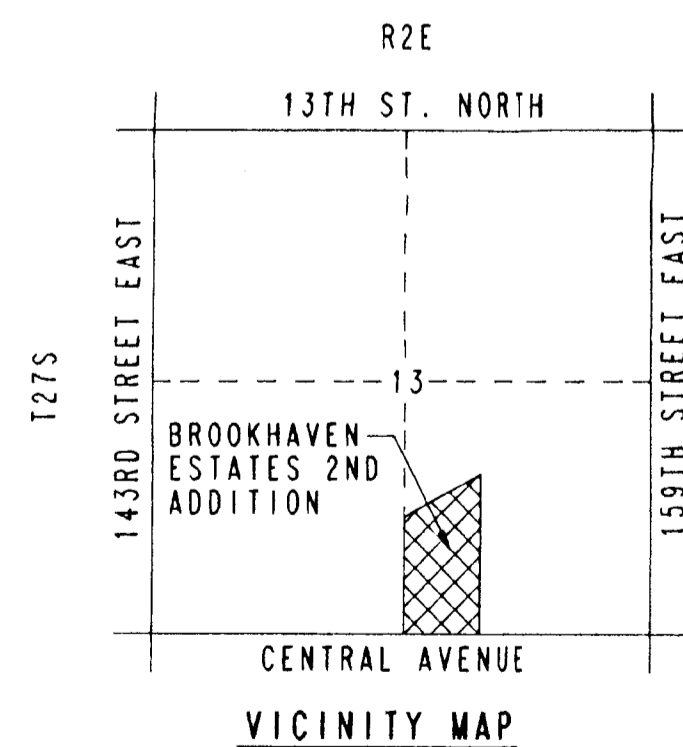
ENGINEERS: PROFESSIONAL ENGINEERING CONSULTANTS, P.A.
303 S. TOPEKA
WICHITA, KANSAS 67202



SCALE: 1"=100'

○ = IRON SET
B.S.L. = BUILDING SETBACK LINE
S.S. = SANITARY SEWER
C.A.C. = COMPLETE ACCESS CONTROL

B.M. = CHISELED "B" ON CONCRETE FOOTING BETWEEN NORTH AND SOUTHWEST COLUMNS OF BRICK STREET MARKER AT NORTHEAST CORNER OF CENTRAL AND LANCASTER DRIVE. EAST ENTRANCE TO BROOKHAVEN ESTATES. ELEV. 1325.64



- LEGEND**
- - INLET
 - - MANHOLE
 - - DIRECTION OF MINOR STORM FLOW
 - ➔ - DIRECTION OF MAJOR STORM FLOW
 - 18"— STORM SEWER PIPE & SIZE
 - - END SECTION HEADWALL
 - 1B - DRAINAGE BASIN
 - PROF. ELEV.
 - (100) - NODE NO.

KANSAS TURNPIKE AUTHORITY
CONDENATION CASE A-54126
COMPLETE ACCESS CONTROL

UNPLATTED "R-1"
CLAYTON BRUCE SMITH AND
JENNIFER LARINE SMITH

OPEN CHANNEL 10' BOTTOM @ 0.40% 600 L.P. &
DRAINAGE ESMT BY SEPARATE INST
To Brookhaven Creek

DA = 13.2 ac
Tc = 22min
Q100 = 48.8cfs

DA = 2.3 ac
Q100 = 11.9 cfs
Tc = 15min

12" Water Asphalt Pavement
8" Gas Over Electric
ACCESS CONTROL EXCEPT 2 OPENINGS C.A.C. C.A.C.