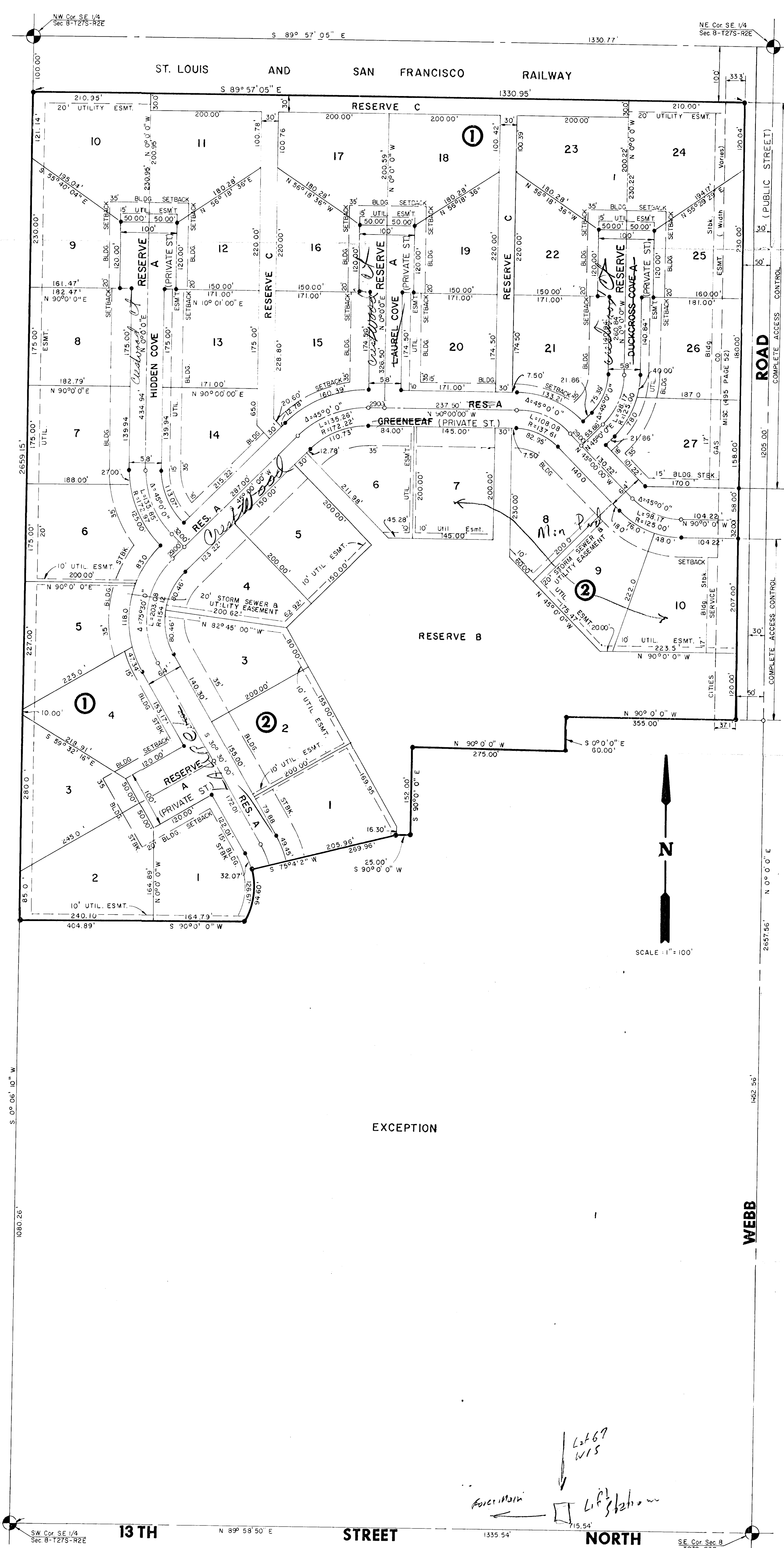


REVISED COPY  
**FINAL PLAT OF FOLIAGE**  
 AN ADDITION TO SEDGWICK COUNTY, KANSAS

686-7303  
 Ken Rayburn  
 Steve Anderson



I, Steven E. Anderson, a Land Surveyor in Kansas, do hereby certify that I have been in responsible charge of surveying and platting of "Foliage", an addition to Sedgwick County, Kansas into lots, blocks, streets and reserves, the same being accurately set forth in the accompanying plat and described as follows:

The east half of the southeast quarter of Section 8, Township 27 south, Range 2 east of the 1st P.M., except the north 100.00 feet thereof and except a tract described as beginning at the southeast corner of said east half; thence northerly along the east line of said east half bearing N 0° 0' 0" E, 1152.56 feet; thence N 90° 0' 0" W, 275.00 feet; thence S 0° 0' 0" E, 60.00 feet; thence S 90° 0' 0" W, 25.00 feet; thence S 73° 1' 2" W, 260.06 feet; thence along a curve to the right having a central angle of 45° 53' 58", a radius of 118.00 feet, a length of 71.60, a chord 92.00 feet long bearing of said east half; thence south along said west line bearing S 0° 0' 0" W, 1080.26 feet to the southeast corner of said east half; thence easterly along the south line of said east half bearing N 89° 58' 50" E, 1355.34 feet to the point of beginning.

I hereby certify that the details of this plat are correct to the best of my knowledge and belief this \_\_\_\_\_ day of \_\_\_\_\_, 1980.

Steven E. Anderson  
 VAN DOREN-HAZARD-STALLINGS  
 201 North Rock Road, Suite 250  
 Wichita, Kansas 67206

Know all men by these presents that we the undersigned property owners of the land as above set forth in the Land Surveyors' Certificate have caused the same to be platted into lots, blocks, streets and reserves, the same to be known as "Foliage", an addition to Sedgwick County, Kansas. The streets are hereby dedicated to and for the use of the public. Easements are hereby granted to and for the construction and maintenance of public utilities and storm sewers. Reserve "A" is platted for the use of sidewalks, fire lanes, construction and maintenance of public utilities, drainage, parking, open space, and private drives. Reserve "B" is platted for the use of sidewalks, open space, recreation, drainage, and construction and maintenance of public utilities. Reserve "C" is platted for the use of open space, recreation and the construction and maintenance of public utilities. All shutters rights of access to or from Webb Road, over and across the west line of Webb Road are hereby granted to Sedgwick County, provided, however, that the subdivision shall have access to Webb Road at one location as shown on the accompanying plat.

Paul J. Foley, Jr.  
 P.M.A., Inc.

STATE OF KANSAS  
 COUNTY OF SEDGWICK

Be it remembered that on this \_\_\_\_\_ day of \_\_\_\_\_, 1980, before me, a Notary Public in and for said State and County, came Paul J. Foley, Jr., for P.M.A., Inc., to me personally known to be the same person who executed the foregoing instrument of writing and duly acknowledged the execution of the same. In testimony whereof I have hereunto set my hand and affixed my notarial seal the day and year above written.

Notary Public  
 My Appointment Expires: \_\_\_\_\_

This plat of "Foliage" has been submitted to and approved by Wichita-Sedgwick County Metropolitan Area Planning Commission, Wichita, Kansas.

Dated this \_\_\_\_\_ day of \_\_\_\_\_, 1980.  
 Wichita-Sedgwick County Metropolitan Area Planning Commission

Michael J. Savina  
 Chairman  
 Robert A. Lakin  
 Secretary

This plat approved and all dedications shown hereon, if any accepted by the City Commission of the City of Wichita, Kansas this \_\_\_\_\_ day of \_\_\_\_\_, 1980.

Robert G. Knight  
 Mayor  
 Donald E. Gistick  
 City Clerk

This plat approved and all dedications shown hereon, if any accepted by the Board of County Commissioners of Sedgwick County, Kansas this \_\_\_\_\_ day of \_\_\_\_\_, 1980.

Everett Patrick  
 Chairman  
 Tom Scott  
 Commissioner  
 Donald E. Gragg  
 Commissioner

Attest:  
 Dorothy K. White  
 County Clerk

Entered on transfer record this \_\_\_\_\_ day of \_\_\_\_\_, 1980.

Dorothy K. White  
 County Clerk

STATE OF KANSAS  
 COUNTY OF SEDGWICK  
 This is to certify that this instrument was filed for record in the Register of Deeds office at \_\_\_\_\_ o'clock on the \_\_\_\_\_ day of \_\_\_\_\_, 1980.

Rette F. McEart  
 Register of Deeds  
 Pat Kettler  
 Deputy

SW Cor. SE 1/4 Sec 8-1275-R2E 13TH STREET N 89° 58' 50" E 1355.54 NORTH SE Cor. Sec 8-1275-R2E