

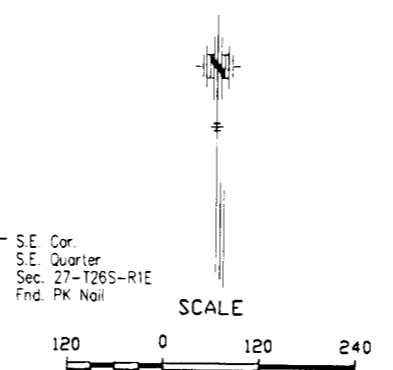
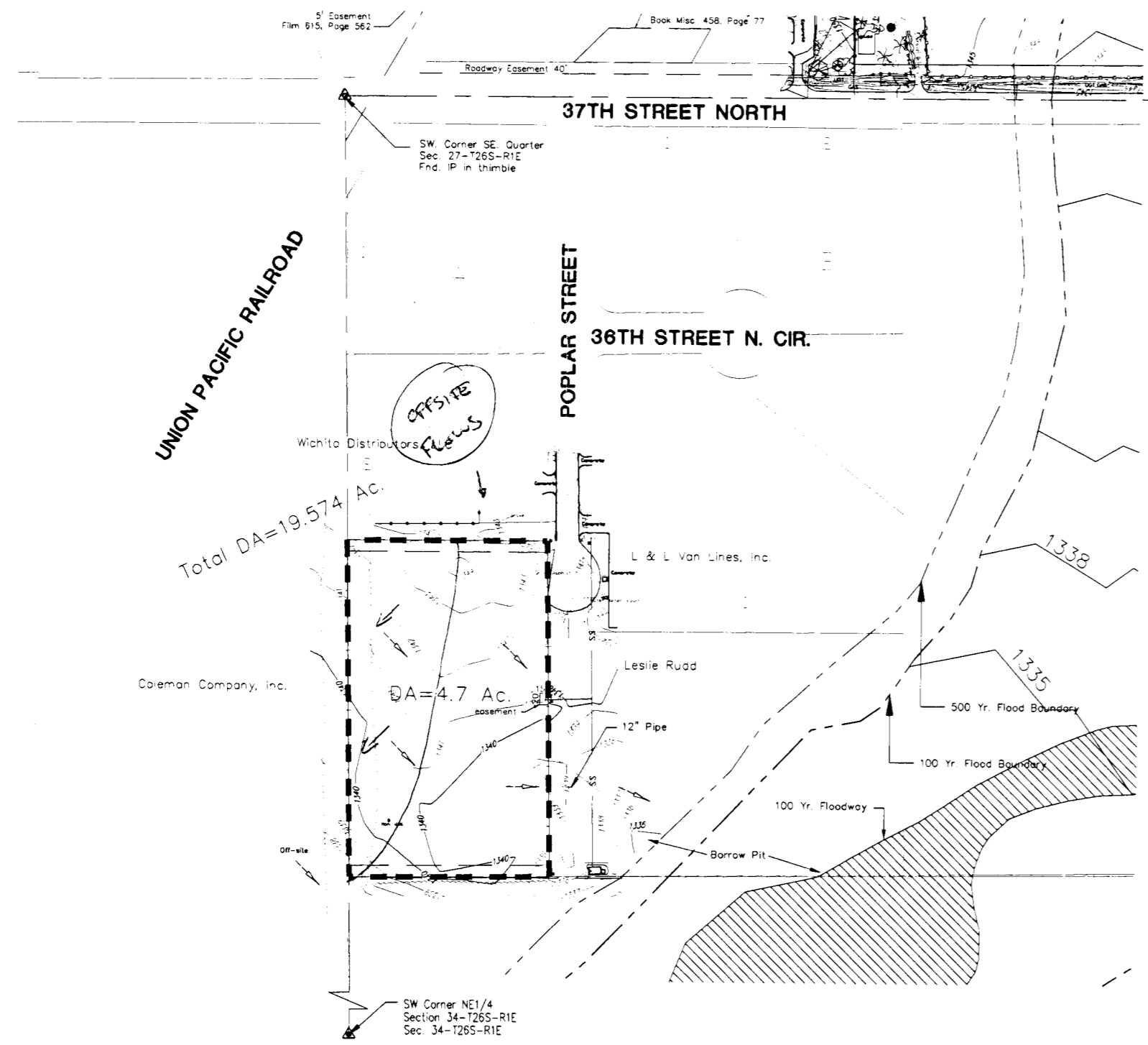
DRAINAGE PLAN FOR NORTHRIDGE INDUSTRIAL THIRD ADDITION WICHITA, SEDGWICK COUNTY, KANSAS

LEGAL DESCRIPTION:
Parcel 1:
The West 350 feet of the North Half of the Northeast Quarter of Section 34, Township 26 South, Range 1 East of the Sixth Principal Meridian, Sedgewick County, Kansas, EXCEPT that part platted as Northridge Industrial Park Addition to Wichita, Sedgewick County, Kansas.

- NOTES:**
1. Cross-drainage agreement required for subsequent sub-divisions.
 2. Detention shall be provided to reduce developed flows. The detention will be held within parking areas. Minimum storage required in this area shall be 1.05 ac-ft. This will maintain the 100-year high water level at an elevation of 1339.30.
 3. Site grading and drainage plans to be designed by a licensed professional engineer.
 4. The drainage plan will need to be updated and filed with city engineering at the time of building permit(s).
 5. Minimum Pad Elevation = 1341.30 (MSL)
 6. If the property is divided into more than one lot when developed, a revised drainage plan for the entire lot must be prepared that indicates how cross lot drainage and required detention will be provided.
 7. Storm sewer easements will be provided as needed to allow drainage to discharge across adjacent lots.
 8. Off-site drainage will pass around the southwest corner of the site. If the existing drainage pattern is altered to enter the site, a revised drainage plan must be provided and approved, that indicates how the storm water will be directed across this site.
 9. The revised drainage plan must be approved by the appropriate governing body prior to building permits being issued.
 10. Any storm water detention areas shown will be revised when the final plans for the development are completed but the runoff amounts will be at or below the post development discharge rates.
 11. Some of the detention ponding may normally be dry and will be provided in areas used for parking. A detailed plan will be provided at the time of development.

- CALCULATION NOTES:**
1. Determination of Q's was made using the SCS method.
 2. Curve Numbers weighted based on hydrologic soil groups.

Area #	Area	Undeveloped					Developed						
		CN _{undev}	CN _{dev}	Q ₂	Q ₅	Q ₁₀	Q ₂₅	Q ₁₀₀	Q ₂	Q ₅	Q ₁₀	Q ₂₅	Q ₁₀₀
Basin	19.57	74.4	81.2	15.79	24.90	32.15	42.16	57.82	22.12	32.22	40.16	50.91	67.22
DA	4.70	56.1	88.0	1.34	3.48	5.41	8.28	13.07	12.26	16.77	20.17	24.68	31.42



LEGEND

- ▲ Section corner found
- Point found
- 5/8" bar w/POE cap set



BENCH MARKS

- MSL Datum
1. City of Wichita Disc on Concrete traffic signal pole base @ S.E. corner of 37th & Hillside. Elev. = 1352.75
 2. City of Wichita Disc 2.5' W. of E. end of N. hubguard of 3-RCB under 37th St. W. of centerline of Hillside. Elev. = 1345.25
 3. " " cut on median curb @ centerline of Poplar 54' S. of centerline of 37th. Elev. = 1351.04
 4. " " cut on N.E. corner concrete pad for electric transformer box W. of yellow building @ 2525 E. 36th St., Suite B. Elev. = 1342.20



<p>Designed By: J. Dickman Drawn By: S. Schmidt Drafting File: P:\B27\Drainage\3-9-2007.dwg Date: 5/4/07</p>	<p>NO. 18137 J. DICKMAN PROFESSIONAL ENGINEER KANSAS</p>
<p>FINAL</p>	
<p>POE & ASSOCIATES, INC. CONSULTING ENGINEERS 5901 Central, Suite 200, Overland Park, KS 66208-4242 Phone: 316-665-4114 & FAX 316-665-4444</p>	
<p>PE</p>	
<p>NORTHRIDGE INDUSTRIAL THIRD ADDITION DRAINAGE PLAN CITY OF WICHITA, KANSAS JIM ARNDORF P.E. - CITY ENGINEER</p>	