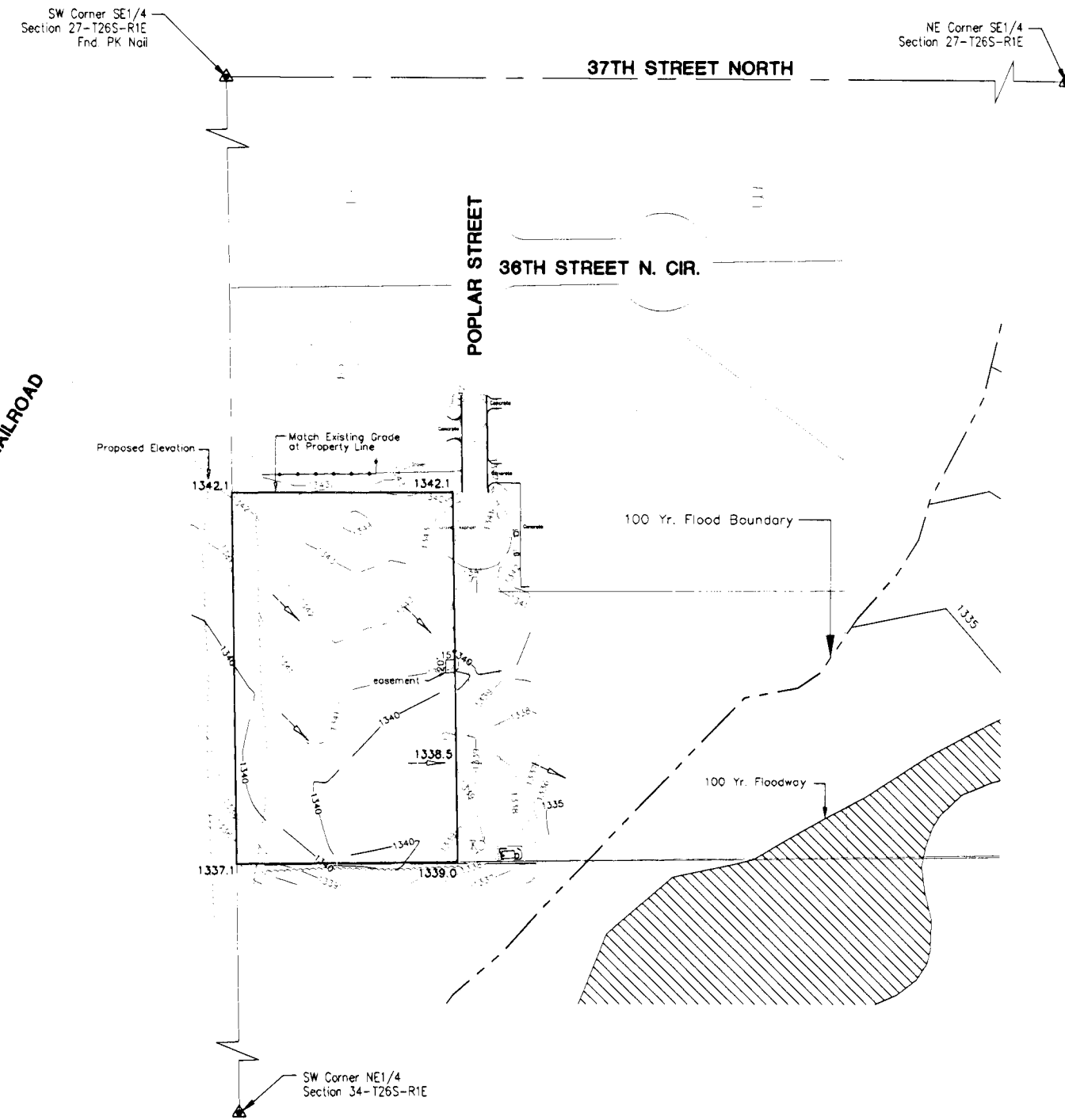


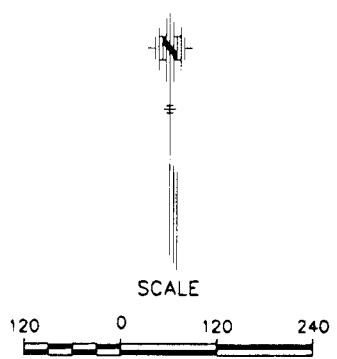
LOT GRADING PLAN NORTHRIDGE INDUSTRIAL THIRD ADDITION WICHITA, SEDGWICK COUNTY, KANSAS



SW Corner SE1/4
Section 27-T265-R1E
Fnd PK Nail

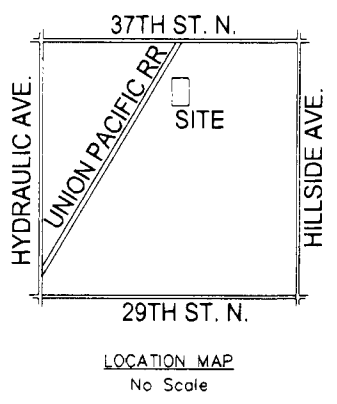
NE Corner SE1/4
Section 27-T265-R1E

SW Corner NE1/4
Section 34-T265-R1E



LEGEND

- ▲ Section corner found
- Point found
- 5/8" bar w/POE cap set



BENCH MARKS

- MSL Datum
1. City of Wichita Disc on Concrete traffic signal pole base @ S.E. corner of 37th & Hillside.
Elev. = 1352.75
 2. City of Wichita Disc 2.5' W. of E. end of N. Hubguard of 3-RCS under 37th St. W. of centerline of Hillside.
Elev. = 1345.25
 3. " " cut on median curb @ centerline of Poplar 54' S. of centerline of 37th.
Elev. = 1351.04
 4. " " cut on N.E. corner concrete pad for electric transformer box W. of yellow building @ 2525 E. 36th St., Suite B.
Elev. = 1342.20

POE & ASSOCIATES, INC.
CONSULTING ENGINEERS
5940 E. Central, Suite 200 • Wichita, KS 67208-4242
Phone 316-685-4114 • FAX 316-685-4444

LEGAL DESCRIPTION:
Parcel 11
The West 350 feet of the North Half of the Northeast Quarter of Section 34, Township 26 South, Range 1 East of the Sixth Principal Meridian, Sedgwick County, Kansas, EXCEPT that part platted as Northridge Industrial Park Addition to Wichita, Sedgwick County, Kansas.

- NOTES:
1. Detailed site grading plans will be submitted when applying for building permits.
 2. Site grading and drainage plans to be designed by a licensed professional engineer.
 3. Minimum Pad Elevation = 1341.30 (MSL)