

Tricia L. Robello, L.S. #1246
Deputy County Surveyor
Sedgwick County, Kansas

Reviewed in accordance with K.S.A. 58-2005 on this _____ day of _____, 2003.

This plat approved and all dedications shown hereon accepted by the City Council of the City of Wichita, Kansas, this _____ day of _____, 2003.

At the Direction of the City Council

Pat Graves, City Clerk

This plat approved and all dedications shown hereon accepted by the Board of County Commissioners of Sedgwick County, Kansas, this _____ day of _____, 2003.

Board of County Commissioners
Sedgwick County, Kansas

Tim R. Norton, Chairman

ATTEST:

Don Brace, County Clerk

Entered on transfer record this _____ day of _____, 2003.

Don Brace, County Clerk

This is to certify that this instrument was filed for record in the Register of Deeds Office at _____, A.M.-P.M. on the _____ day of _____, 2003.

Bill Meek, Register of Deeds

Linda Kizzire, Chief Deputy

STATE OF KANSAS, COUNTY OF SEDGWICK: ss.

I, Kenny E. Hill, being a duly licensed Land Surveyor in said County and State, do hereby certify that the survey and platting of NORTHLAKES COMMERCIAL ADDITION to Sedgwick County, Kansas, was completed under my direct supervision, said plat being described as follows:

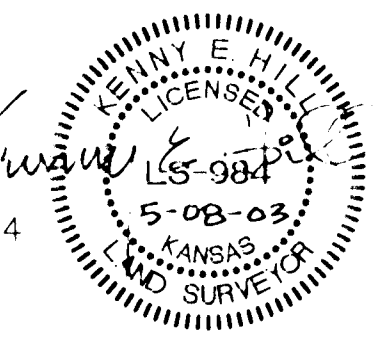
Commencing at the Northeast corner of the Northwest Quarter of Section 24, Township 26 South, Range 1 West of the 6th P.M., Sedgwick County, Kansas; thence West on the North line of the Northwest Quarter of said Section 24 for a distance of 220.00 feet to the point of beginning; thence South at right angles to the North line of the Northwest Quarter of said Section 24 for a distance of 450.00 feet; thence West for a distance of 900.00 feet; thence North for a distance of 450.00 feet to a point on the North line of the Northwest Quarter of said Section 24; thence East for a distance of 900.00 feet to the point of beginning, subject to road right-of-way.

The accompanying plat is a true and correct exhibit of property surveyed.

Dated this 21th day of MAY, 2003.

Poe and Associates of Kansas, Inc.

Kenny E. Hill, L.S. 984
Vice President



KNOW ALL MEN BY THESE PRESENTS:

That we, the undersigned, have caused the land described in the Surveyor's Certificate to be platted into a lot, a block and a street. The street is hereby dedicated to and for the use of the public. Easements are hereby granted as indicated for the construction and maintenance of utilities. All abutters rights of access to or from Lot 1, Block 1 over and across the South line of 53rd Street North, except for one opening in the West 60 feet of the East 473.5 feet of said Lot 1, Block 1, are hereby granted to the appropriate governing body. A drainage plan has been developed for the plat and all drainage easements, rights-of-way, or reserves shall remain at established grades or as modified with approval of the applicable City or County Engineer, and remain unobstructed to allow for the conveyance of stormwater.

CBB Northlakes, LLC

C. Bill Bachman, Managing Member

STATE OF KANSAS, COUNTY OF SEDGWICK: ss.

This instrument was acknowledged before me on this 19th day of May, 2003, by C. Bill Bachman, Managing Member of CBB Northlakes, LLC.

Notary Public
Levy Stahl
My Appointment Expires: October 13, 2005

My Appointment Expires: October 13, 2005

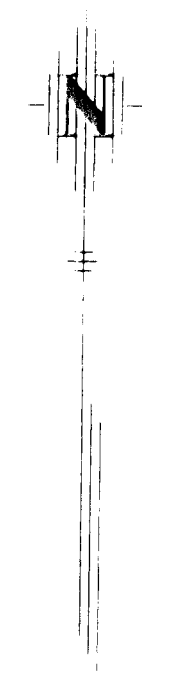
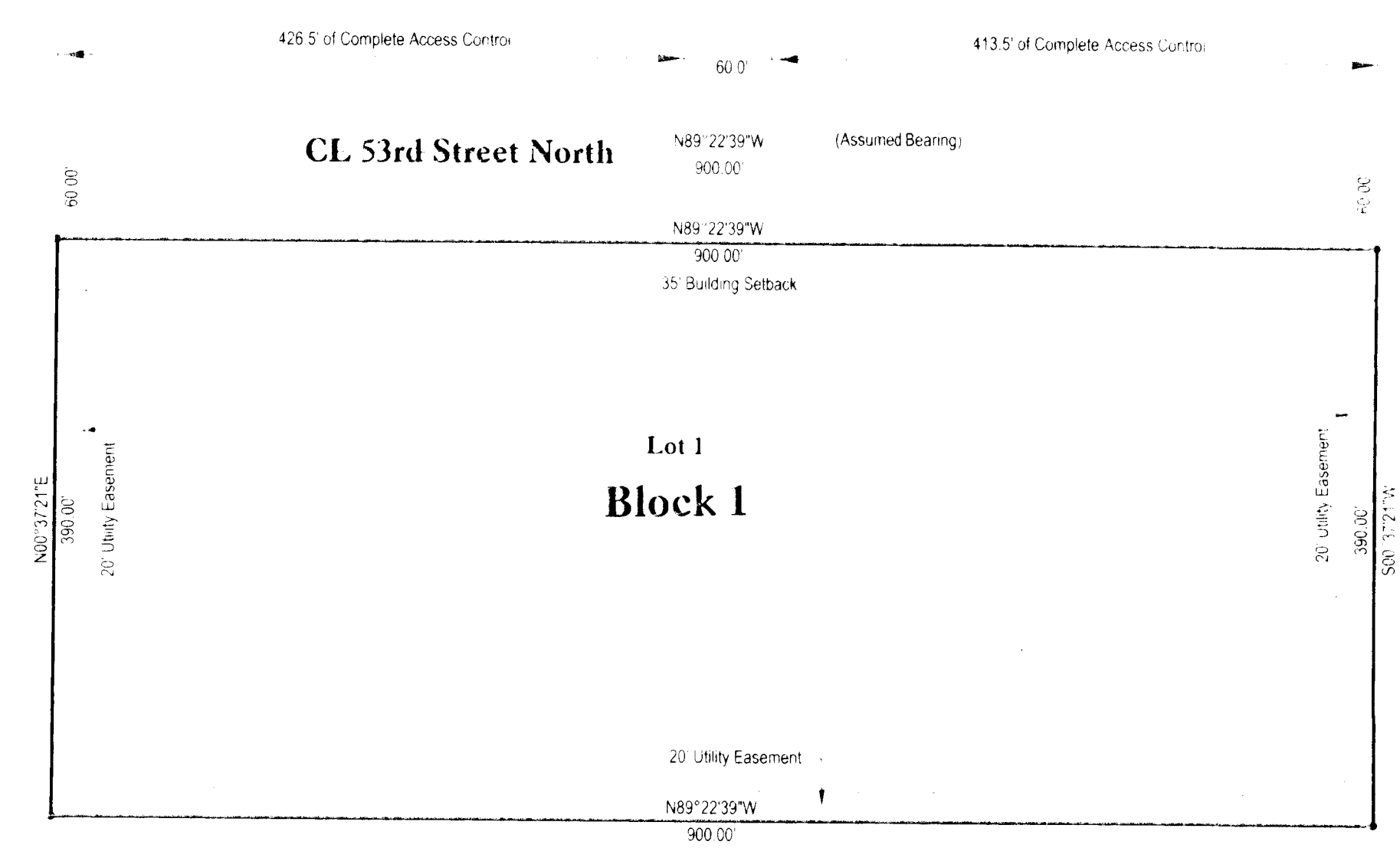
This plat of NORTHLAKES COMMERCIAL ADDITION to Sedgwick County, Kansas has been submitted to and approved by this WICHITA-SEDGWICK COUNTY METROPOLITAN AREA PLANNING COMMISSION, Wichita, Kansas.

Dated this _____ day of _____, 2003.

Wichita Sedgwick County Metropolitan
Area Planning Commission

Bernard A. Hentzen, Chair

Dale Miller, Secretary



LEGEND

Iron Set
Center Line CL

0 50 100 200
SCALE IN FEET 1" = 100'

NORTHLAKES COMMERCIAL ADDITION

to Sedgwick County, Kansas

April 5/2003

