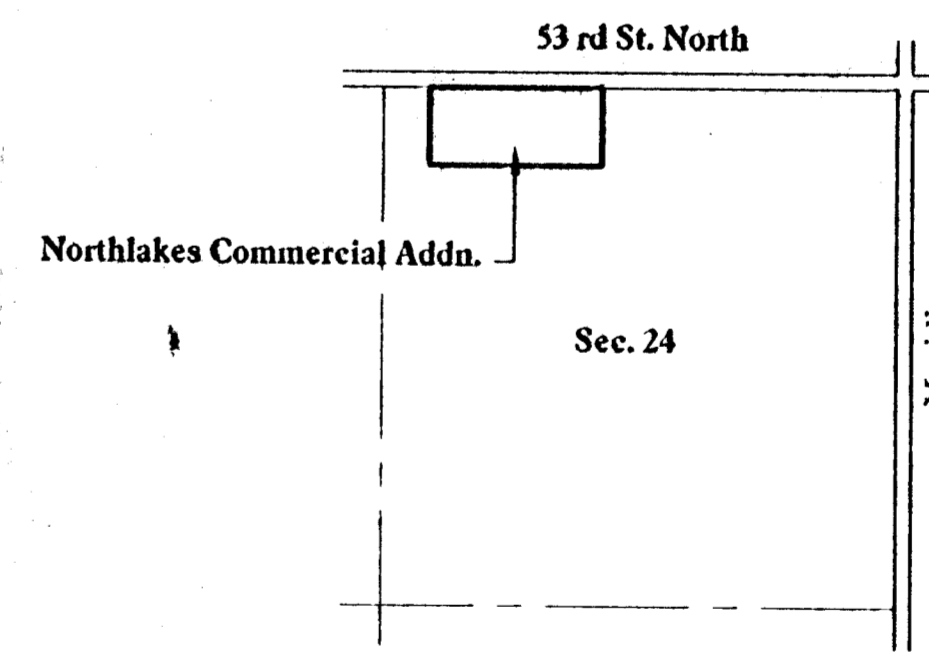
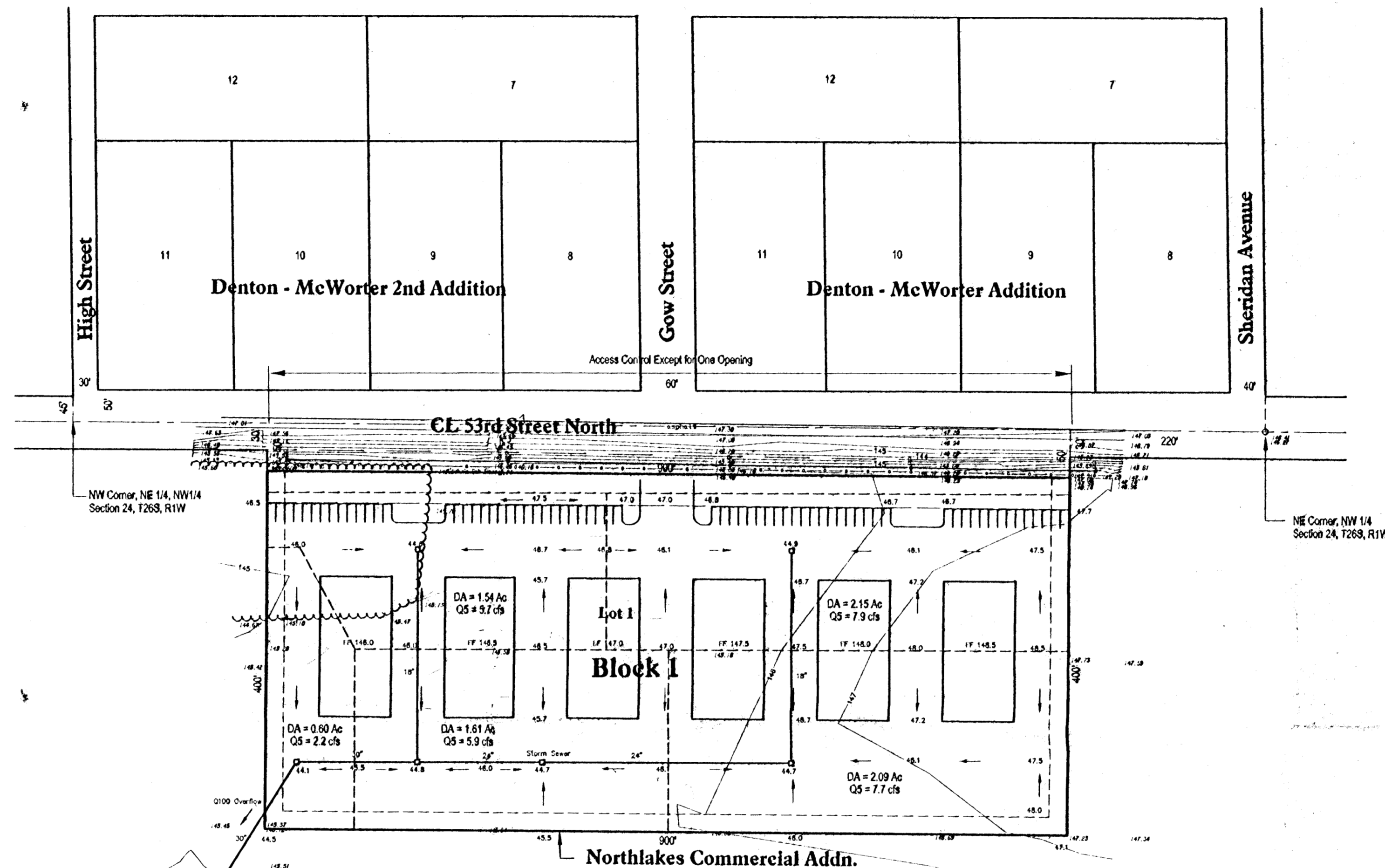
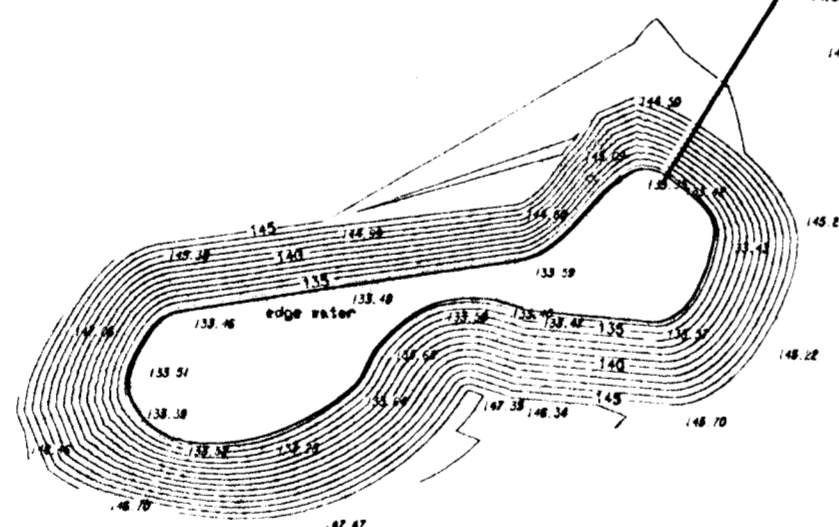
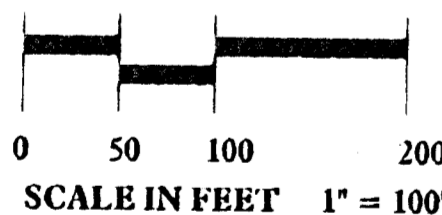


BENCHMARK

Square set on SE hubguard of river RCB
(Bottom step)
Approx. location at NE corner of Section 24
Elevation 1348.19 USGS Datum

LEGEND

- Iron Set
- Center Line
- Existing Ground
- Finished Ground



VICINITY MAP

Drainage and Lot Grading Plan

NORTHLAKES COMMERCIAL ADDITION

to Sedgwick County, Kansas

Date: March 21, 2003

Property Owner:
CBB Northlakes, LLC
% O. Bill Bachman
6847 N. Meridian
Wichita, Kansas 67204

