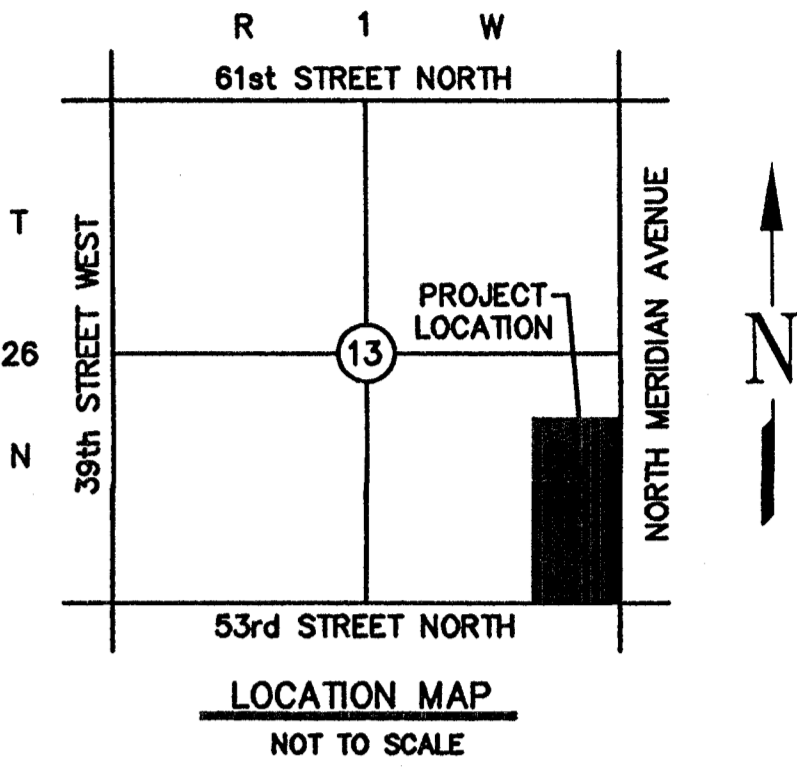
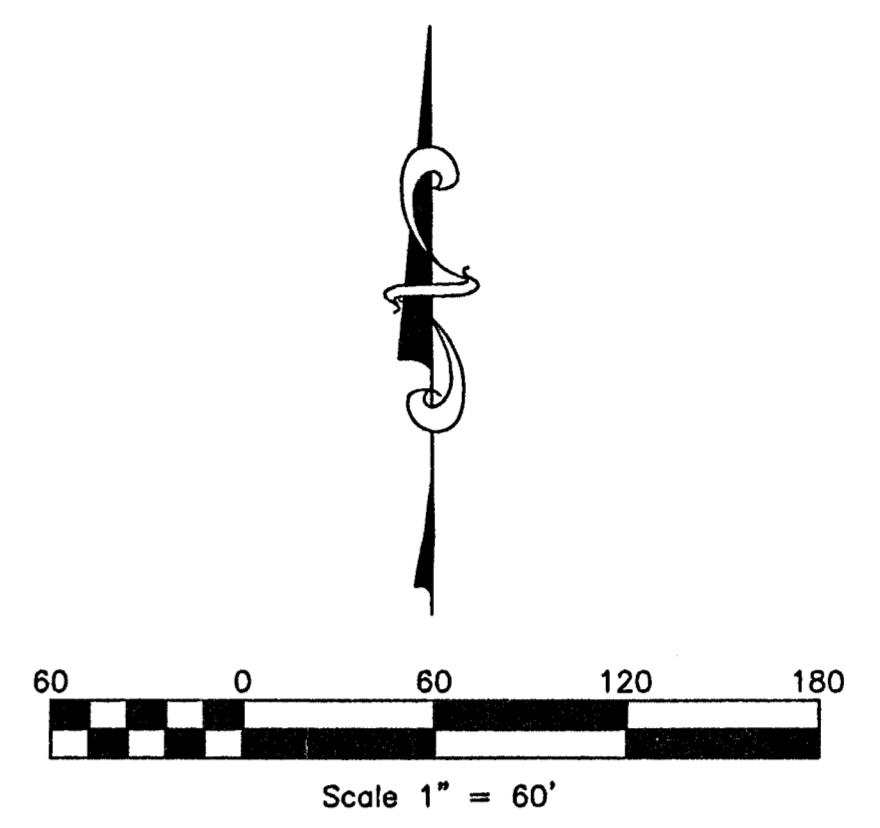


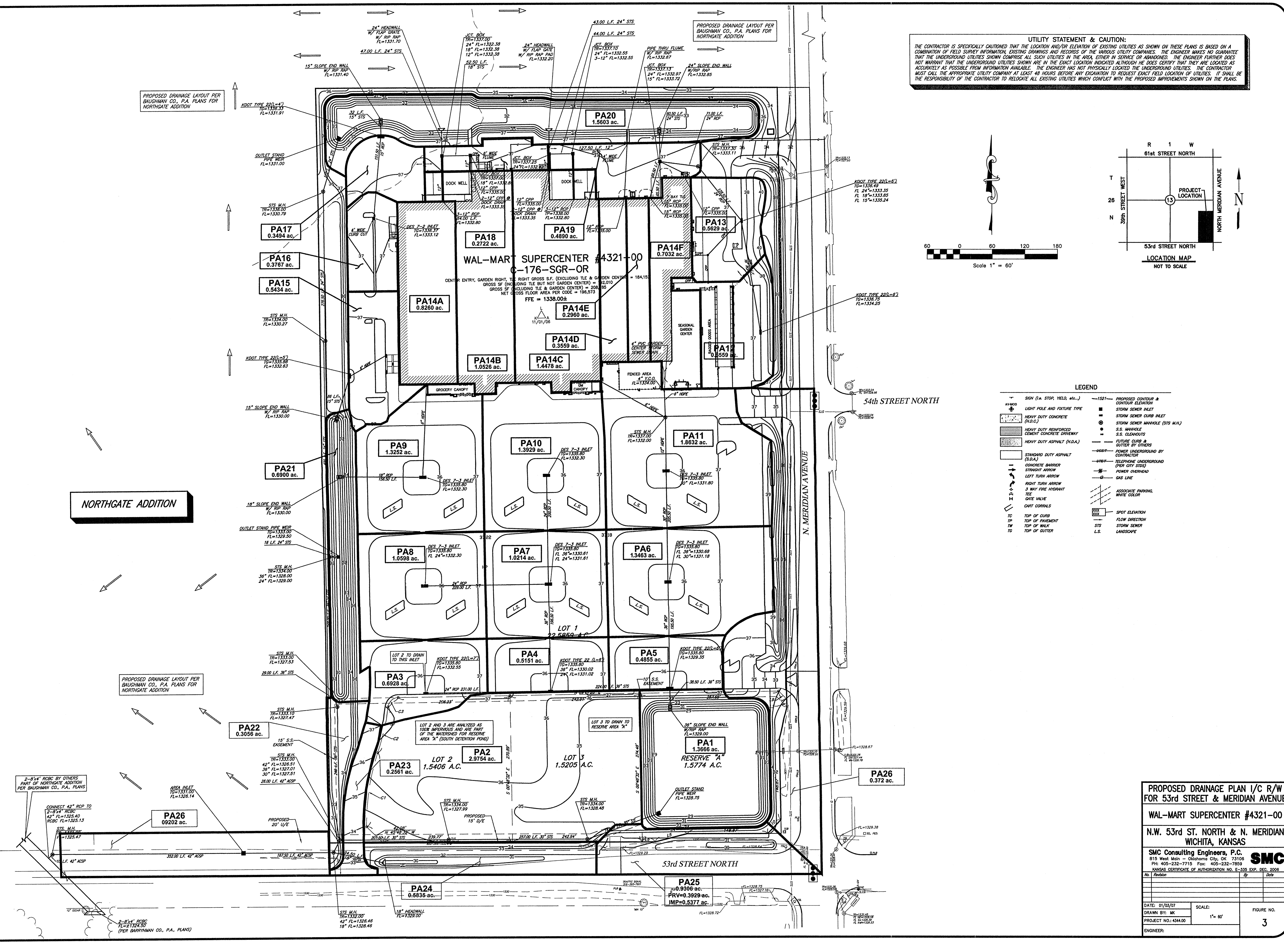
**UTILITY STATEMENT & CAUTION:**  
 THE CONTRACTOR IS SPECIFICALLY CAUTIONED THAT THE LOCATION AND/OR ELEVATION OF EXISTING UTILITIES AS SHOWN ON THESE PLANS IS BASED ON A COMBINATION OF FIELD SURVEY INFORMATION, EXISTING DRAWINGS AND RECORDS OF THE VARIOUS UTILITY COMPANIES. THE ENGINEER MAKES NO GUARANTEE THAT THE UNDERGROUND UTILITIES SHOWN COMPRISE ALL SUCH UTILITIES IN THE AREA, EITHER IN SERVICE OR ABANDONED. THE ENGINEER FURTHER DOES NOT WARRANT THAT THE UNDERGROUND UTILITIES SHOWN ARE IN THE EXACT LOCATION INDICATED, ALTHOUGH HE DOES CERTIFY THAT THEY ARE LOCATED AS ACCURATELY AS POSSIBLE FROM INFORMATION AVAILABLE. THE ENGINEER HAS NOT PHYSICALLY LOCATED THE UNDERGROUND UTILITIES. THE CONTRACTOR MUST CALL THE APPROPRIATE UTILITY COMPANY AT LEAST 48 HOURS BEFORE ANY EXCAVATION TO REQUEST EXACT FIELD LOCATION OF UTILITIES. IT SHALL BE THE RESPONSIBILITY OF THE CONTRACTOR TO RELOCATE ALL EXISTING UTILITIES WHICH CONFLICT WITH THE PROPOSED IMPROVEMENTS SHOWN ON THE PLANS.



PROPOSED DRAINAGE LAYOUT PER BAUGHMAN CO., P.A. PLANS FOR NORTHGATE ADDITION

PROPOSED DRAINAGE LAYOUT PER BAUGHMAN CO., P.A. PLANS FOR NORTHGATE ADDITION

**NORTHGATE ADDITION**



**LEGEND**

- |    |  |          |                                       |
|----|--|----------|---------------------------------------|
| ▲  | SIGN (i.e. STOP, YIELD, etc.)                  | — 1521 — | PROPOSED CONTOUR & CONTOUR ELEVATION  |
| ○  | AVENUE   | ■        | STORM SEWER INLET                     |
| ○  | LIGHT POLE AND FIXTURE TYPE                    | ■        | STORM SEWER CURB INLET                |
| ■  | HEAVY DUTY CONCRETE (H.D.C.)                   | ○        | STORM SEWER MANHOLE (STS M.H.)        |
| ■  | HEAVY DUTY REINFORCED CEMENT CONCRETE DRIVEWAY | ●        | S.S. MANHOLE                          |
| ■  | HEAVY DUTY ASPHALT (H.D.A.)                    | ●        | S.S. CLEANOUT                         |
| —  | STANDARD DUTY ASPHALT (S.D.A.)                 | —        | FUTURE CURB & GUTTER BY OTHERS        |
| —  | CONCRETE BARRIER                               | —        | POWER UNDERGROUND BY CONTRACTOR       |
| →  | STRAIGHT ARROW                                 | —        | TELEPHONE UNDERGROUND (PER CITY STDS) |
| ↶  | LEFT TURN ARROW                                | —        | POWER OVERHEAD                        |
| ↷  | RIGHT TURN ARROW                               | —        | GAS LINE                              |
| ⊥  | 3 WAY FIRE HYDRANT                             | —        | ASSOCIATE PARKING, WHITE COLOR        |
| ⊥  | GATE VALVE                                     | □        | SPOT ELEVATION                        |
| ⊥  | CURT CURBS                                     | □        | FLOW DIRECTION                        |
| TD | TOP OF CURB                                    | —        | STS                                   |
| TP | TOP OF PAVEMENT                                | —        | LANDSCAPE                             |
| TW | TOP OF WALK                                    |          |                                       |
| TO | TOP OF GUTTER                                  |          |                                       |

**PROPOSED DRAINAGE PLAN 1/C R/W FOR 53rd STREET & MERIDIAN AVENUE**  
**WAL-MART SUPERCENTER #4321-00**  
 N.W. 53rd ST. NORTH & N. MERIDIAN WICHITA, KANSAS  
**SMC Consulting Engineers, P.C.**  
 815 West Main - Oklahoma City, OK 73106  
 PH: 405-232-7715 Fax: 405-232-7859  
 KANSAS CERTIFICATE OF AUTHORIZATION NO. E-335 EXP. DEC. 2006

No.	Revision	By	Date

DATE: 01/07/07 SCALE: 1" = 60' FIGURE NO. 3  
 DRAWN BY: MK  
 PROJECT NO: 4344.00  
 ENGINEER: