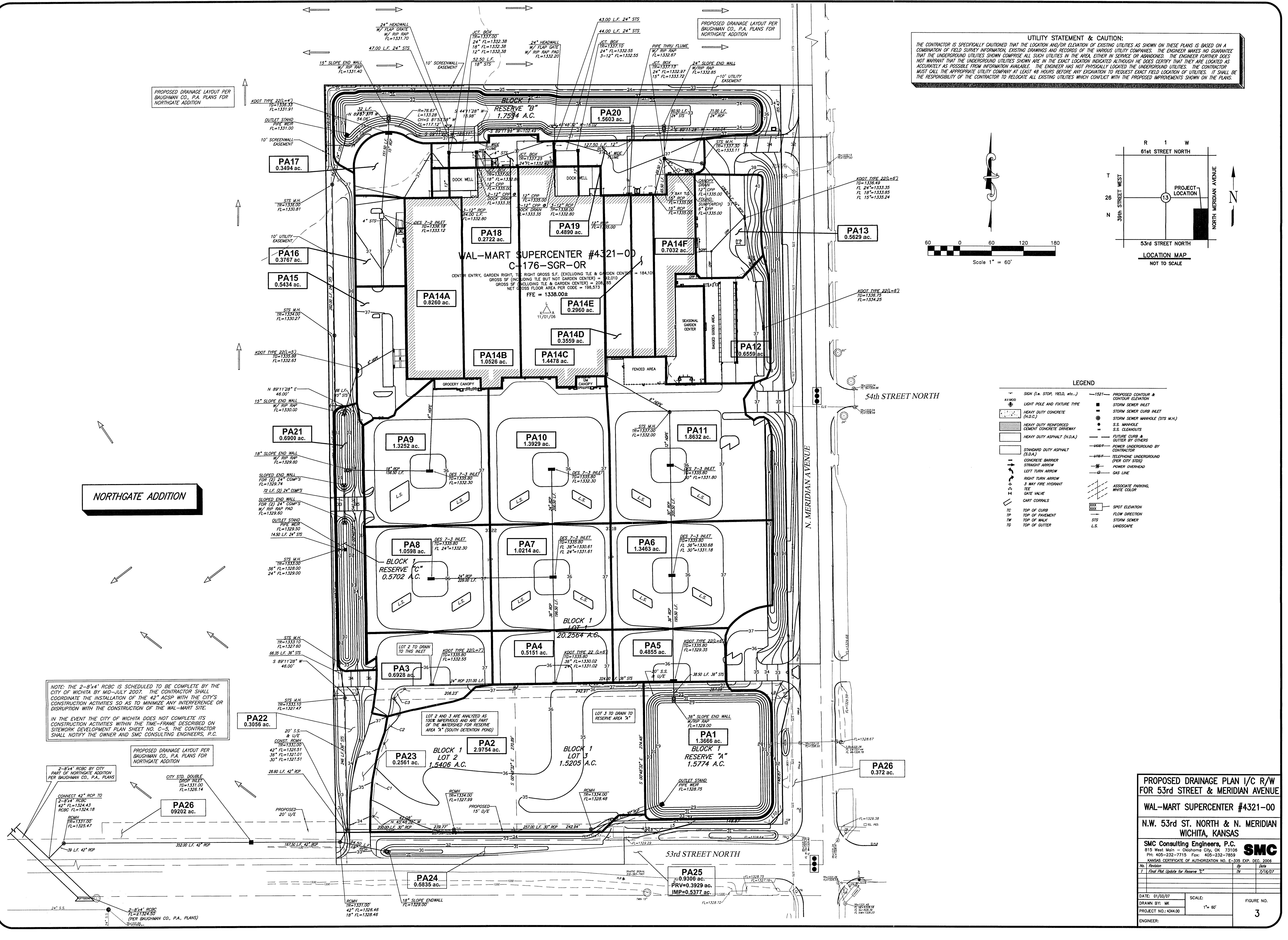
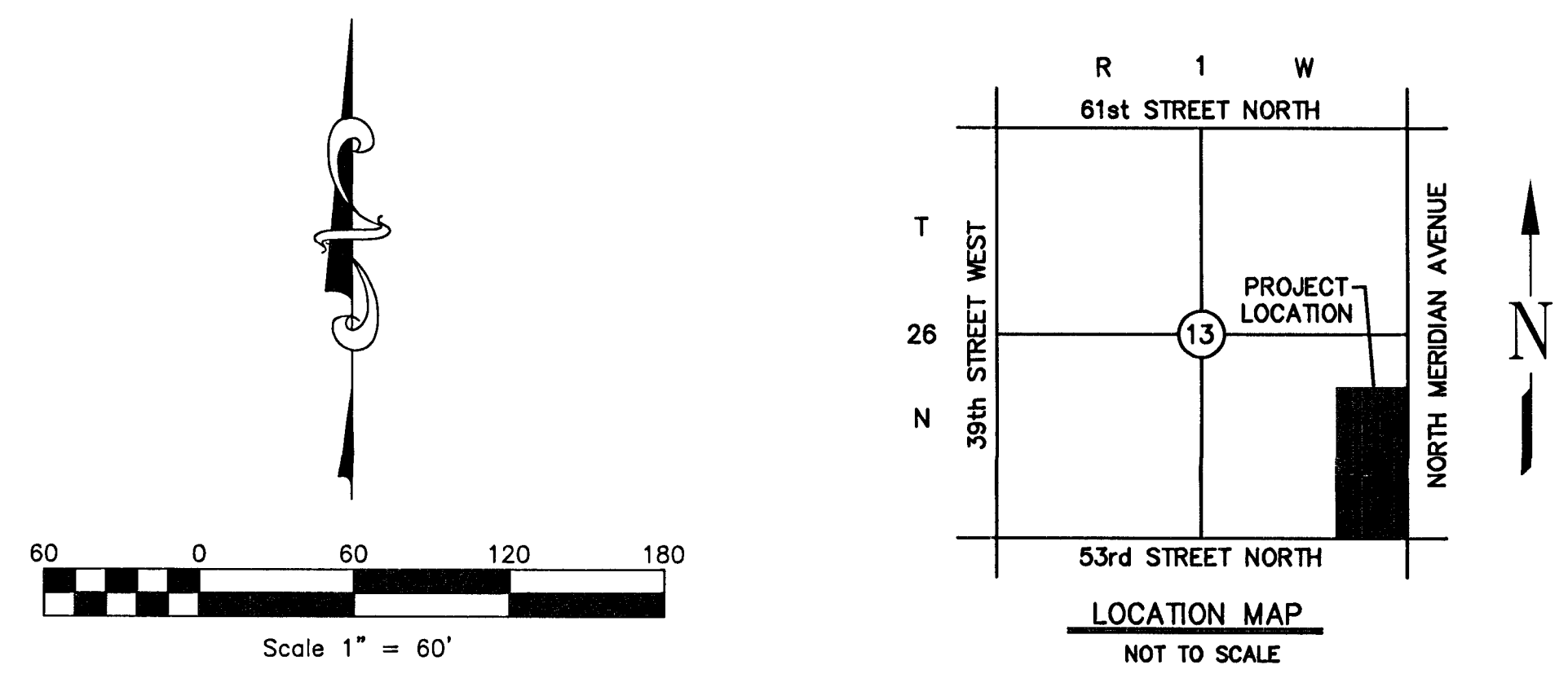


PROPOSED DRAINAGE LAYOUT PER BAUGHMAN CO., P.A. PLANS FOR NORTHGATE ADDITION

UTILITY STATEMENT & CAUTION:
 THE CONTRACTOR IS SPECIFICALLY CAUTIONED THAT THE LOCATION AND/OR ELEVATION OF EXISTING UTILITIES AS SHOWN ON THESE PLANS IS BASED ON A COMBINATION OF FIELD SURVEY INFORMATION, EXISTING DRAWINGS AND RECORDS OF THE VARIOUS UTILITY COMPANIES. THE ENGINEER MAKES NO GUARANTEE THAT THE UNDERGROUND UTILITIES SHOWN COMPRISE ALL SUCH UTILITIES IN THE AREA EITHER IN SERVICE OR ABANDONED. THE ENGINEER FURTHER DOES NOT WARRANT THAT THE UNDERGROUND UTILITIES SHOWN ARE IN THE EXACT LOCATION INDICATED ALTHOUGH HE DOES CERTIFY THAT THEY ARE LOCATED AS ACCURATELY AS POSSIBLE FROM INFORMATION AVAILABLE. THE CONTRACTOR HAS NOT PHYSICALLY LOCATED THE UNDERGROUND UTILITIES. THE CONTRACTOR MUST CALL THE APPROPRIATE UTILITY COMPANY AT LEAST 48 HOURS BEFORE ANY EXCAVATION TO REQUEST EXACT FIELD LOCATION OF UTILITIES. IT SHALL BE THE RESPONSIBILITY OF THE CONTRACTOR TO RELOCATE ALL EXISTING UTILITIES WHICH CONFLICT WITH THE PROPOSED IMPROVEMENTS SHOWN ON THE PLANS.



LEGEND

—	SIGN (i.e. STOP, YIELD, etc.)	—	PROPOSED CONTOUR & CONTOUR ELEVATION
—	AVOID	—	STORM SEWER INLET
—	LIGHT POLE AND FIXTURE TYPE	—	STORM SEWER CURB INLET
—	HEAVY DUTY CONCRETE (H.D.C.)	—	STORM SEWER MANHOLE (STS M.H.)
—	HEAVY DUTY REINFORCED CEMENT CONCRETE DRIVEWAY	—	S.S. MANHOLE
—	HEAVY DUTY ASPHALT (H.D.A.)	—	S.S. CLEAVELITS
—	STANDARD DUTY ASPHALT (S.D.A.)	—	FUTURE CURB & GUTTER BY OTHERS
—	CONCRETE BARRIER	—	POWER UNDERGROUND BY CONTRACTOR
—	STRAIGHT ARROW	—	TELEPHONE UNDERGROUND (PER CITY STDS)
—	LEFT TURN ARROW	—	POWER OVERHEAD
—	RIGHT TURN ARROW	—	GAS LINE
—	3 MARK FIRE HOVARIANT	—	ASSOCIATE PARKING WHITE COLOR
—	GATE VALVE	—	SPOT ELEVATION
—	GATE CONTROLS	—	FLOW DIRECTION
—	DESIGN CONTROL	—	STORM SEWER
—	DESIGN CONTROL	—	LANDSCAPE

NOTE: THE 2'-8" x 4" RCBC IS SCHEDULED TO BE COMPLETE BY THE CITY OF WICHITA BY MID-JULY 2007. THE CONTRACTOR SHALL COORDINATE THE INSTALLATION OF THE 42" ACPSP WITH THE CITY'S CONSTRUCTION ACTIVITIES SO AS TO MINIMIZE ANY INTERFERENCE OR DISRUPTION WITH THE CONSTRUCTION OF THE WAL-MART SITE.

IN THE EVENT THE CITY OF WICHITA DOES NOT COMPLETE ITS CONSTRUCTION ACTIVITIES WITHIN THE TIME-FRAME DESCRIBED ON SITEMARK DEVELOPMENT PLAN SHEET NO. C-5, THE CONTRACTOR SHALL NOTIFY THE OWNER AND SMC CONSULTING ENGINEERS, P.C.

PROPOSED DRAINAGE PLAN I/C R/W FOR 53rd STREET & MERIDIAN AVENUE

WAL-MART SUPERCENTER #4321-00

N.W. 53rd ST. NORTH & N. MERIDIAN WICHITA, KANSAS

SMC Consulting Engineers, P.C.
 815 West Main - Oklahoma City, OK 73106
 PH: 405-232-7715 Fax: 405-232-7859
 KANSAS CERTIFICATE OF AUTHORIZATION NO. E-335 EXP. DEC. 2008

No.	Revision	By	Date
1	Final Plot Update for Reserve 'C'	IV	7/16/07

DATE: 01/03/07 SCALE: 1" = 60' FIGURE NO. 3

ENGINEER: