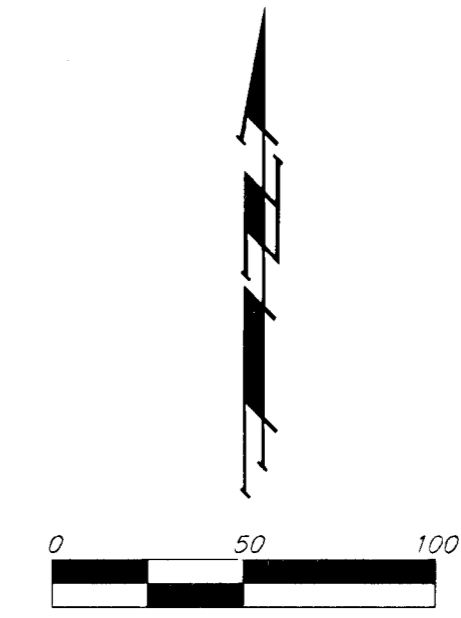
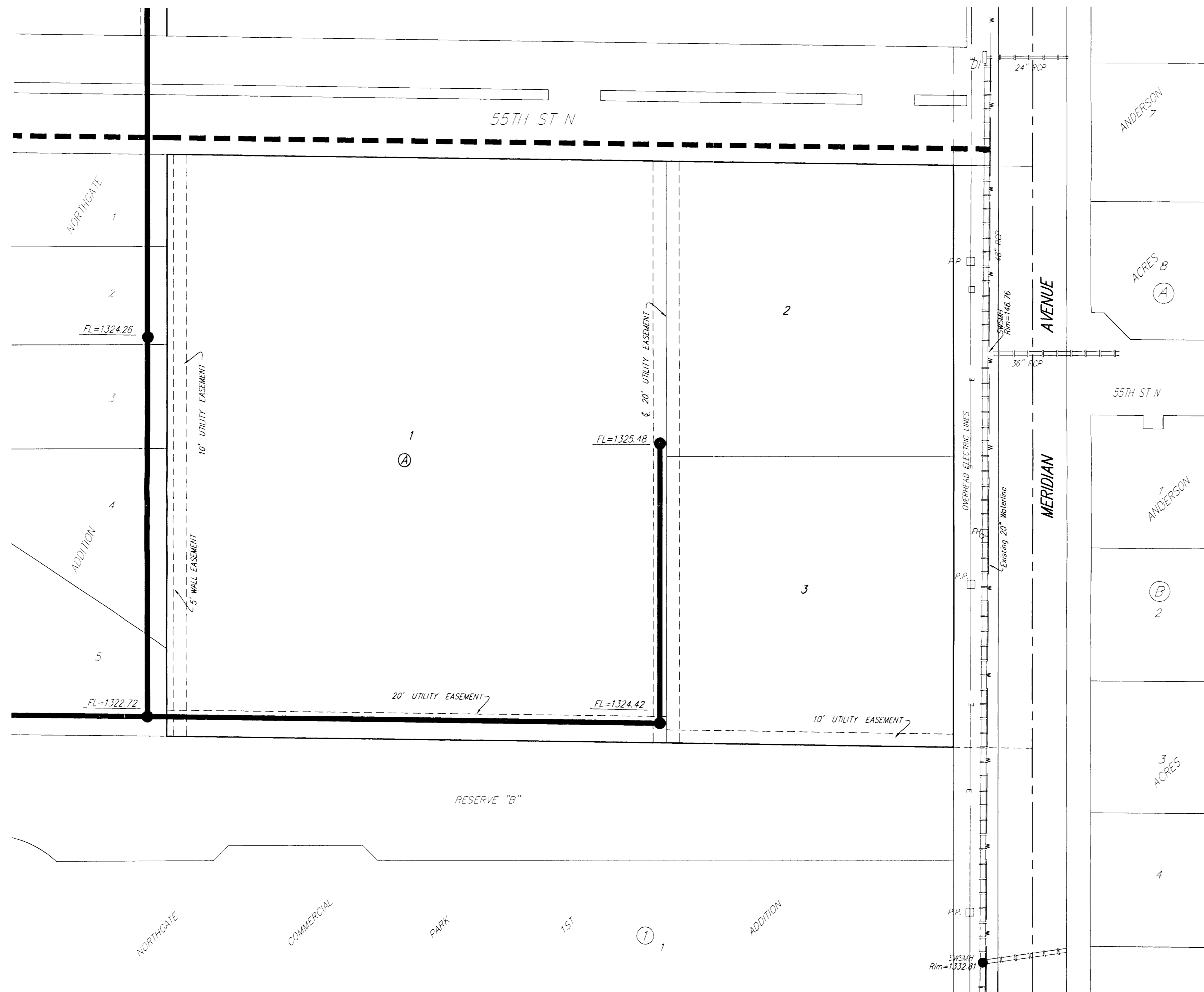


ONE-STEP FINAL PLAT

# NORTHGATE COMMERCIAL 2ND ADDITION

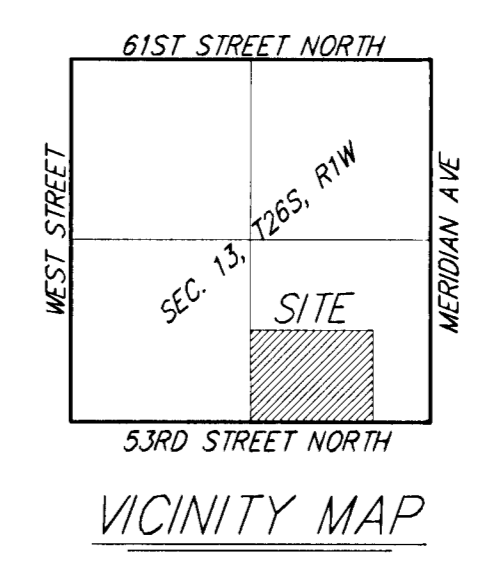
## UTILITY PLAN CONCEPT

### WICHITA, SEDGWICK COUNTY, KANSAS



**LEGEND**

	Proposed Water Line (8" Unless Noted Otherwise)
	Existing Water Line (8" Unless Noted Otherwise)
	Proposed Sanitary Sewer Line (8" Unless Noted Otherwise)
	Existing Sanitary Sewer Line (8" Unless Noted Otherwise)
	Proposed Sanitary Sewer Manhole
	Proposed Fire Hydrant
	Proposed Sanitary Sewer Flow
	Existing ELEC Line
	Existing TELE Line
	Existing GAS Line
	Existing CoTV Line



	Power Pole
	Electric Meter
	SBC Pedestal
	Sanitary Sewer Manhole
	Stormwater Sewer Manhole
	Drop Inlet
	Water Vault
	Fire Hydrant

**NORTHGATE COMMERCIAL 2ND**  
19 NOVEMBER, 2007

**Baughman Company, P.A.**  
315 Ellis St. Wichita, KS 67211 P 316-262-7271 F 316-262-0149

**baughman** ENGINEERING | SURVEYING | PLANNING | LANDSCAPE ARCHITECTURE

E:\PLAT\NORTHGATECOMMERCIALADD\NORTHGATECOMM2ND.UP.dwg QED