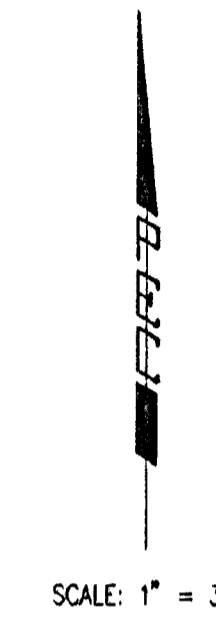
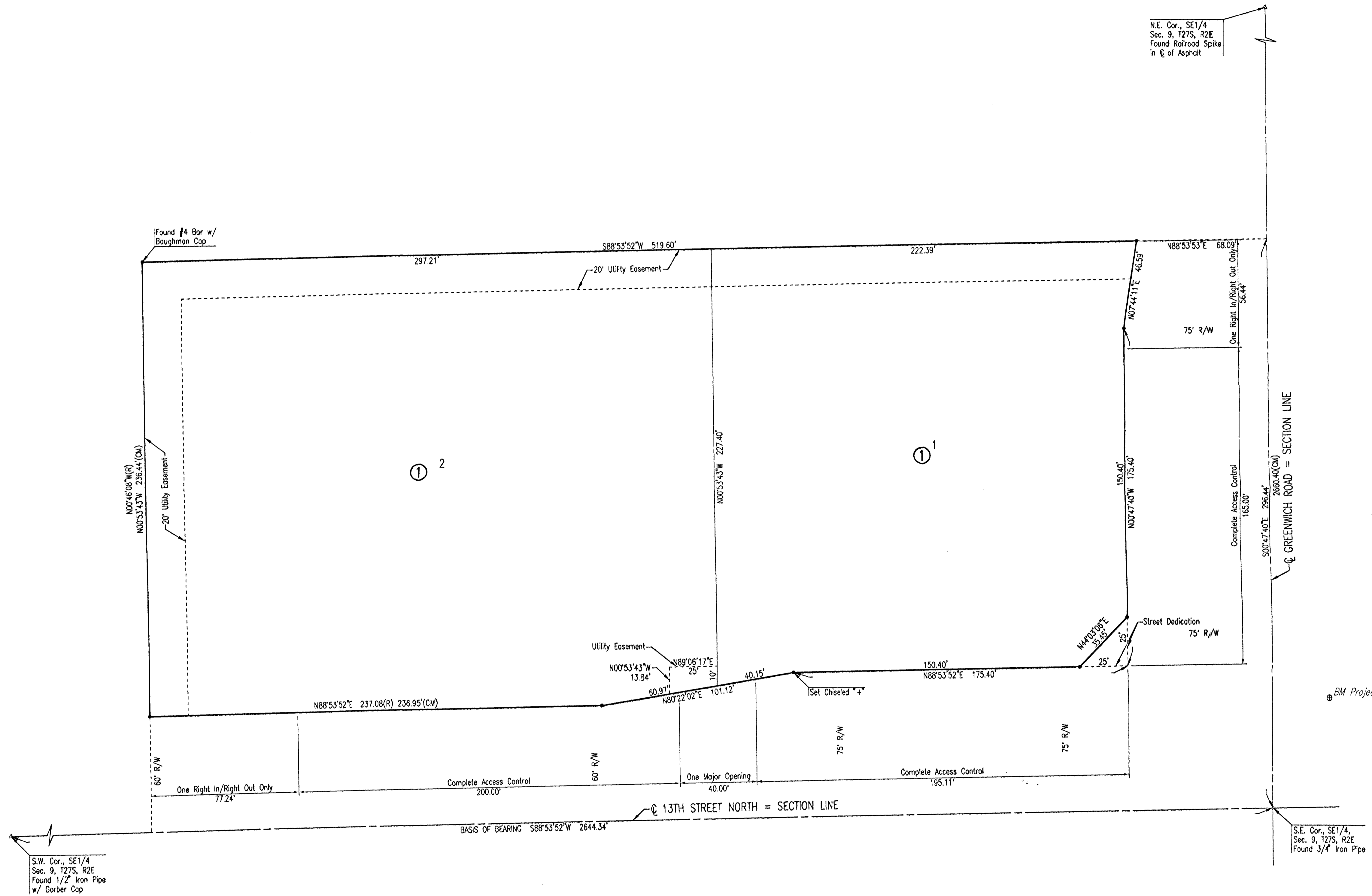


HOME BANK & TRUST COMPANY ADDITION

AN ADDITION TO WICHITA, SEDGWICK COUNTY, KANSAS



SCALE: 1" = 30'

PROJECT BENCHMARK:
CHISELED "4" WEST CURB ISLAND AT THE NORTHEAST CORNER OF
GREENWICH ROAD AND 13TH STREET NORTH.
ELEVATION = 1388.15 N.G.V.D.
= 198.75 CITY DATUM

LEGEND

- 1/2" REBAR W/PEC CAP UNLESS OTHERWISE NOTED
- R RECORD BEARING AND DISTANCE
- CM CALCULATED FROM MEASUREMENT
- ⊕ BM Bench Mark/Vertical Control Point

S.W. Cor., SE1/4,
Sec. 9, T27S, R2E
Found 1/2" Iron Pipe
w/ Corber Cap

N.E. Cor., SE1/4,
Sec. 9, T27S, R2E
Found Railroad Spike
in C of Asphalt

S.E. Cor., SE1/4,
Sec. 9, T27S, R2E
Found 3/4" Iron Pipe

USNR: RMH OPR: JLS SCALE: 1"=30.00 05-25-2005 11:20:32 am Q:\2004\04640\DD\dwg\04640_FINAL.PLT