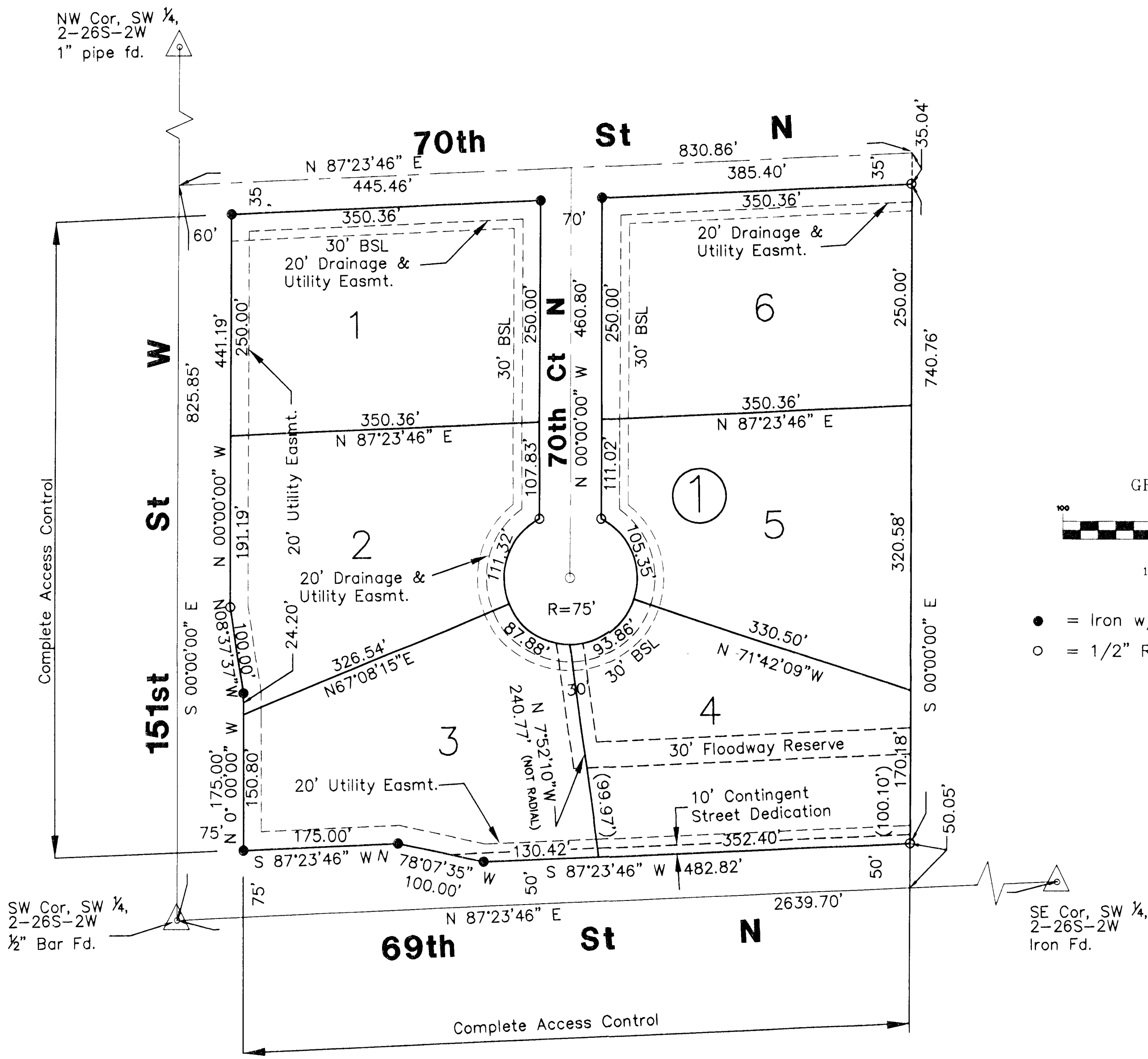


# IMBLER ESTATES 2ND ADDITION

## TO SEDGWICK COUNTY, KANSAS

FINAL RECORD  
9-20-08



BENCH MARK: SQUARE CUT SE CORNER EAST HEADWALL 4@6'X4' RCBC 2670 FEET  
NORTH OF SW CORNER OF SW 1/4, SEC 2-26-2W ELEVATION = 1374.47 NGVD

BENCH MARK: TOP OF REBAR W/ANDERSON CAP NE CORNER LOT 11, BLOCK 2  
IMBLER ESTATES ADDITION ELEVATION = 1369.16 NGVD

State of Kansas) SS  
Sedgwick County)  
We, Savoy Company, P.A., Surveyors in aforesaid county and state do hereby certify that, under the supervision of the undersigned, we have surveyed and platted "IMBLER ESTATES 2ND ADDITION", to Sedgwick County, Kansas and that the accompanying plat is a true and correct exhibit of the property surveyed, described as and being a replat of the following described property:

Lots 1, 2 and 3, Block 3, and all of 70th Ct. North, lying south of the north line of said Lot 1, extended east to the west line of said Lot 3, Imbler Estates, an Addition to Sedgwick County, Kansas.

All Public easements and dedications being vacated by virtue of K.S.A. 12-512(b).  
Savoy Company, P.A.

Date: 19 August 2008  
Mark A. Savoy, PLS #788 Surveyor

Know all men by these presents that We, the undersigned, have caused the land described in the surveyors certificate to be platted into Lots, a Block and Streets to be known as "IMBLER ESTATES 2ND ADDITION", to Sedgwick County, Kansas. The street is hereby dedicated to and for the use of the public. The contingent street dedication is hereby dedicated to and for the use of the public upon the need by the appropriate governing body for future street construction. The drainage & utility easements are hereby granted as indicated for drainage purposes and for the construction and maintenance of all public utilities. The Floodway Reserve shall be owned and maintained by the abutting lot owners. Provided further, that no building shall be constructed on or within said floodway reserve nor shall any fill, change of grade, creation of channel or other work be carried on without the permission of the appropriate governing body. Access controls are hereby granted to the appropriate governing body as indicated on the face of the plat. A drainage plan has been developed for this plat and all drainage easements and rights-of-way shall remain at established grades or modified with the approval of the Engineer of the appropriate governing body, and unobstructed to allow for the conveyance of stormwater.

- = Iron w/Anderson Cap (Found)
- = 1/2" Rebar w/Savoy Cap (Set)

Kenneth W. Havener Kenneth W. Havener  
Susan J. Havener Susan J. Havener

State of Kansas) SS  
Sedgwick County)  
The foregoing instrument acknowledged before me, this 25th day of August, 2008, by Kenneth W. Havener and Susan J. Havener, husband and wife.

My App't. Exp Jan 15, 2011  
Alison Couey Notary Public  
ALISON COUEY  
Notary Public - State of Kansas  
My App't. Expires 1/15/11

We, the undersigned, holders of a mortgage on the above described property, do hereby consent to this plat of "IMBLER ESTATES 2ND ADDITION", to Sedgwick County, Kansas.  
Intrust Bank  
[Signature] Name [Signature] Title

State of Kansas) SS  
Sedgwick County)  
The foregoing instrument acknowledged before me, this 25th day of August, 2008, by Susan K. Cook of Intrust Bank, on behalf of the Bank.

My App't. Exp 11/3/08  
Susan K. Cook Notary Public  
SUSAN K. COOK  
Notary Public - State of Kansas  
My App't. Expires 11/3/08

Reviewed in accordance with K.S.A. 58-2005 on this 21st day of August, 2008.  
LS-12-8  
[Signature] Deputy County Surveyor  
Sedgwick County, Kansas  
Robello, L.S. #1246

This plat of "IMBLER ESTATES 2ND ADDITION", to Sedgwick County, Kansas, has been submitted to and approved by the Wichita-Sedgwick County Metropolitan Area Planning Commission, Wichita, Kansas. Dated this 19th day of August, 2008.

Wichita-Sedgwick County Metropolitan Area Planning Commission  
\_\_\_\_\_  
M.S. Mitchell Chairman  
\_\_\_\_\_  
John L. Schlegel Secretary

This plat approved and all dedications shown hereon, are hereby accepted by the Board of County Commissioners, Sedgwick County, Kansas, this day 19th of August, 2008.

\_\_\_\_\_  
Tom Winters Chairman  
\_\_\_\_\_  
Don Brace County Clerk

Entered on transfer record this \_\_\_\_\_ day of \_\_\_\_\_, 2008.  
\_\_\_\_\_  
Don Brace County Clerk

State of Kansas) SS  
Sedgwick County)  
This is to certify that this plat has been filed for record in the office of the Register of Deeds, this \_\_\_\_\_ day of \_\_\_\_\_, 2008, at \_\_\_\_\_ o'clock \_\_\_\_\_ M. and is duly recorded.  
\_\_\_\_\_  
Bill Meek Register of Deeds

\_\_\_\_\_  
Tonya Buckingham Deputy