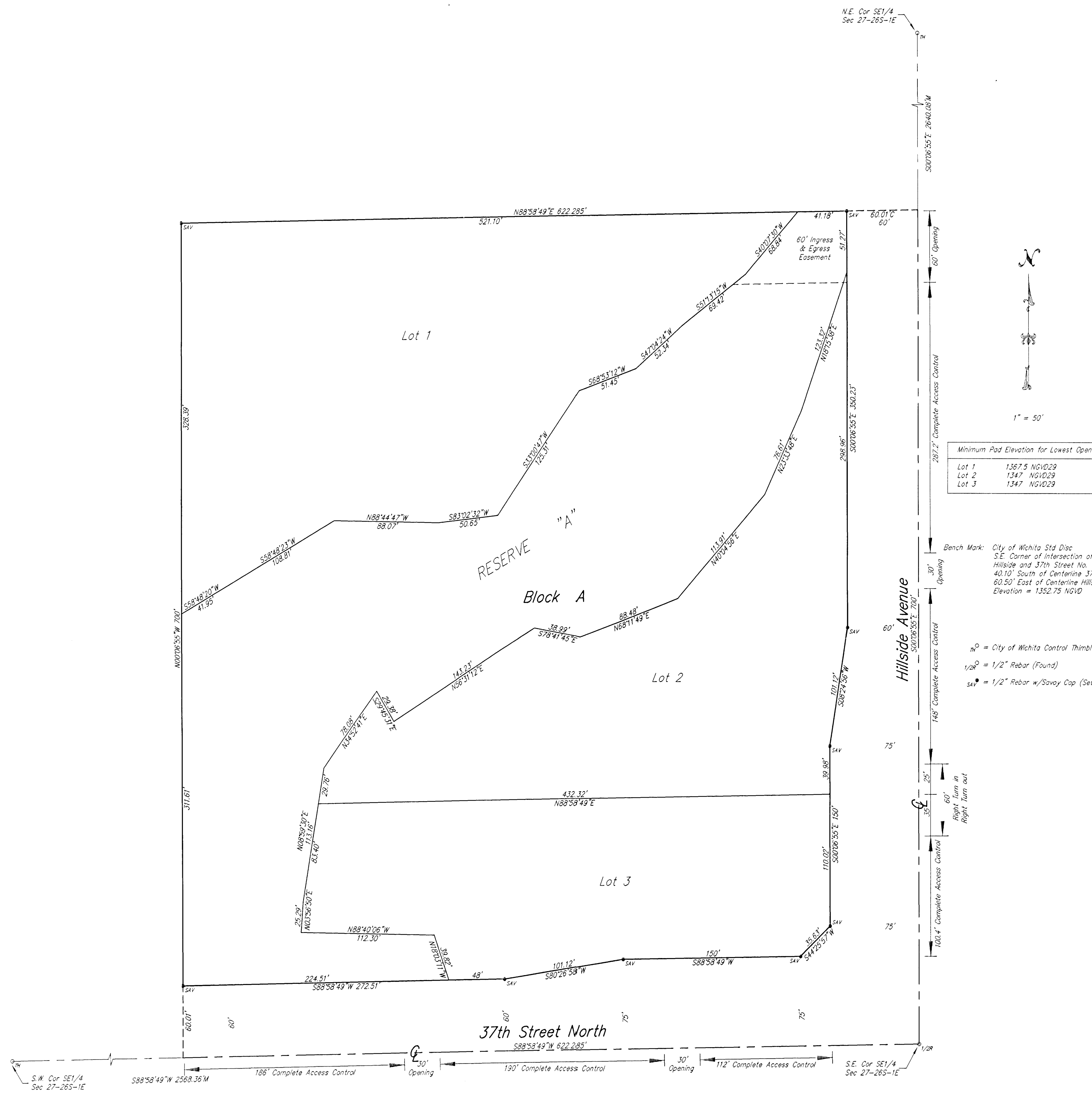


KOCH OFFICE PARK 4TH ADDITION

Wichita, Sedgwick County, Kansas



State of Kansas) SS
Sedgwick County)

We, Savoy Company, P.A., Surveyors in aforesaid county and state do hereby certify that, under the supervision of the undersigned, we have surveyed and platted "KOCH OFFICE PARK 4TH ADDITION", Wichita, Sedgwick County, Kansas and that the accompanying plat is a true and correct exhibit of the property surveyed, described as:

That part of the SE1/4 of Sec. 27, Twp. 26-S, R-1-E of the 6th P.M., Sedgwick County, Kansas described as beginning at the S.E. Corner of said SE1/4; thence west, along the south line of said SE1/4, 622.285 feet; thence north, parallel with the east line of said SE1/4, 700 feet; thence east, parallel with the south line of said SE1/4, 622.285 feet to the east line of said SE1/4; thence south, along the the east line of said SE1/4, 700 feet to the place of beginning, subject to easements of record.

All Public easements and dedications being vacated by virtue of K.S.A. 12-512(b).

Savoy Company, P.A.

Date _____

Mark A. Savoy RLS #788
Surveyor

Know all men by these presents that I, the undersigned, have caused the land described in the surveyors certificate to be platted into a Lot, Block and Street to be known as "KOCH OFFICE PARK 4TH ADDITION", Wichita, Sedgwick County, Kansas. The drainage and utility easements are hereby granted as indicated for the construction and maintenance of all public utilities, and for drainage purposes. Reserve "A" is hereby reserved for floodway easement and shall be owned and maintained by the owners of Lots 1, 2 and 3, until such time as the governing body exercising jurisdiction elects to assume the responsibility for the maintenance and improvemnet of the drainage. Provided further, that no building shall be constructed on or within said floodway easement nor shall any fill, change of grade, creation of channel or other work be carried on without the permission of the appropriate governing body. With such permission of said appropriate governing body, additional improvements and/or activities may be permitted within said floodway easement such as landscaping, water features, paths, pedestrian crossings and recreational facilities. A drainage plan has been developed for this plat and all drainage easements, rights-of-way, or reserves shall remain at established grades, or as modified with the approval of the City Engineer, and unobstructed to allow for the conveyance of stormwater. The Access Controls are hereby granted to the appropriate governing body as indicated on the face of the plat. Minimum Pad Elevations are as shown on the face of the plat.

Koch Real Estate Holdings, Inc.

_____, President

State of Kansas) SS
Sedgwick County)

The foregoing instrument acknowledged before me, this _____ day of _____, 2006, by _____, President of Koch Real Estate Holdings, Inc. on behalf of the corporation.

Notary Public

My App't. Exp. _____

This plat of "KOCH OFFICE PARK 4TH ADDITION", Wichita, Sedgwick County, Kansas, has been submitted to and approved by the Wichita-Sedgwick County Metropolitan Area Planning Commission, Wichita, Kansas.

Dated this _____ day of _____, 2006.

Wichita-Sedgwick County Metropolitan Area Planning Commission

Harold L. Warner, Jr.
Chairman

John L. Schiegel
Secretary

This plat approved and all dedications shown hereon, accepted by the City Council of the City of Wichita, Kansas, this _____ day of _____, 2006.

Carlos Mayans
Mayor

Karen Sublett
City Clerk

Reviewed in accordance with K.S.A. 58-2005 on this _____ day of _____, 2006.

Tricia L. Robello, LS #1246
Deputy County Surveyor
Sedgwick County Kansas

Entered on transfer record this _____ day of _____, 2006.

Don Brace
County Clerk

State of Kansas) SS
Sedgwick County)

This is to certify that this plat has been filed for record in the office of the Register of Deeds, this _____ day of _____, 2006, at o'clock _____ M: and is duly recorded.

Bill Meek
Register of Deeds

Tonya Buckingham
Deputy