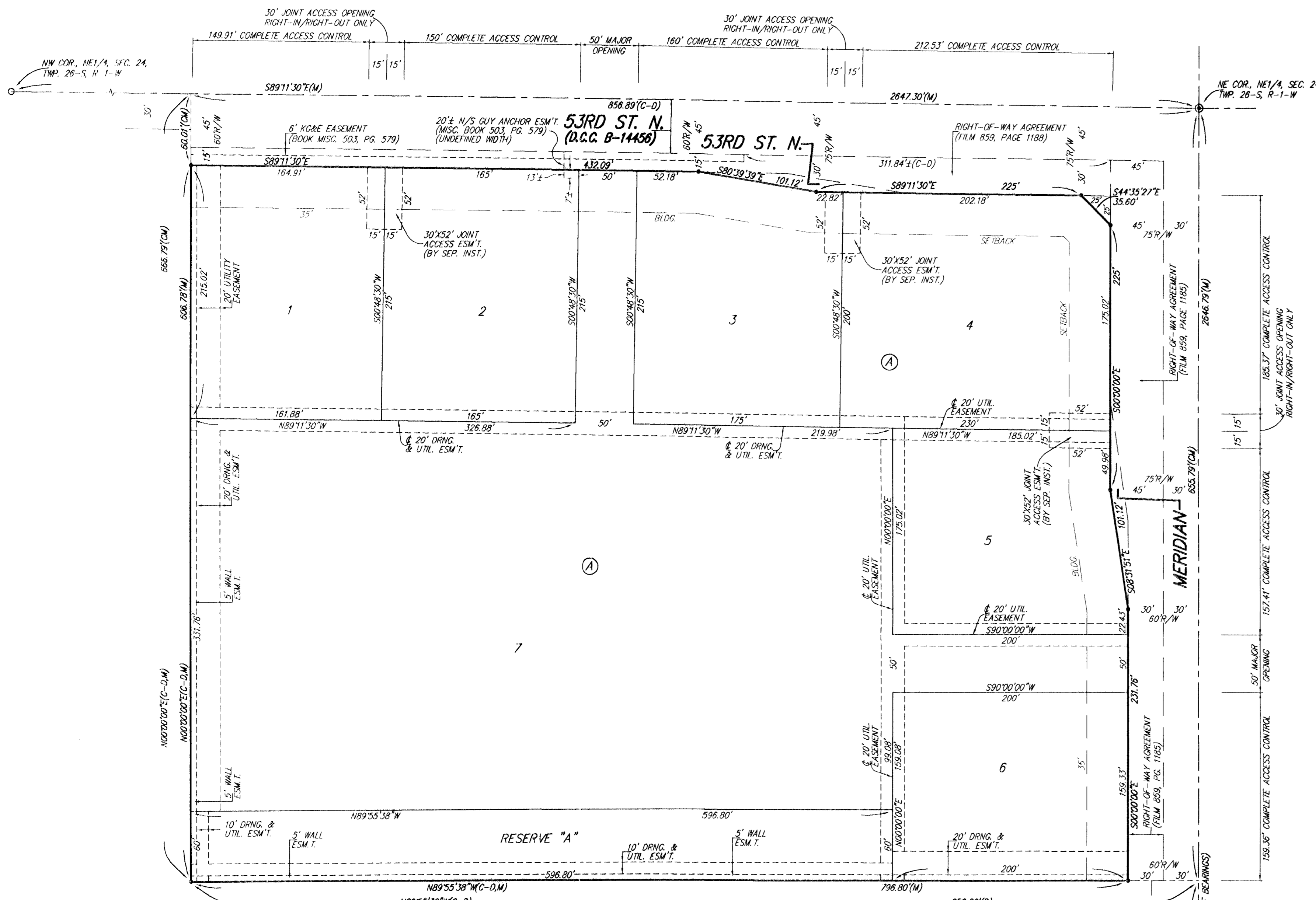
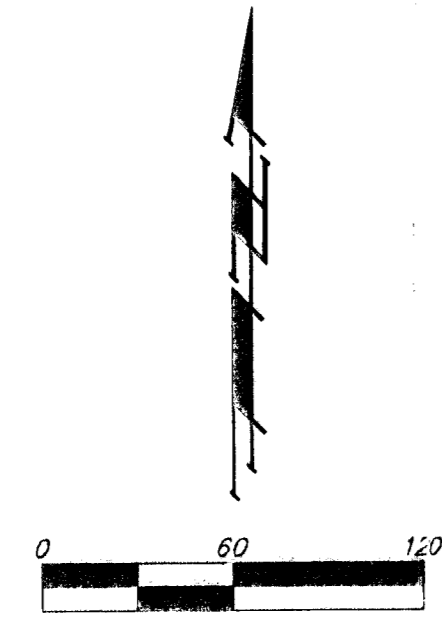


JOHNSON COMMERCIAL CENTRE

AN ADDITION TO WICHITA, SEDGWICK COUNTY, KANSAS



LOT	BLOCK	ELEVATION
1, 2	A	1332.0



BENCHMARK:
 CON. MARKER AT THE INTERSECTION OF MERIDIAN AND 53RD ST. N. N. CORNER, TOP OF CONCRETE HEADWALL.
 44' NORTH OF CENTERLINE
 57' EAST OF CENTERLINE
 50.00' N. OF SECTION CORNER
 9' N. OF AND PARALLEL TO CURB
 26' EAST OF SECTION LINE
 ELEV. = 1331.17 NGVD29

NOTE:
 A DRAINAGE PLAN HAS BEEN DEVELOPED FOR THIS SUBDIVISION AND IS ON FILE WITH THE CITY OF WICHITA, KANSAS. DRAINAGE INTENT SHALL REMAIN AS DELINEATED OR AS MODIFIED WITH THE APPROVAL OF THE CITY ENGINEER OF THE CITY OF WICHITA, KANSAS. NO OBSTRUCTIONS WHICH IMPED THE FLOW OF THIS DRAINAGE PLAN SHALL BE ALLOWED.

NOTE:
 ADDITIONAL BUILDING SETBACKS AND OTHER REQUIREMENTS ARE PER THE JOHNSON COMMERCIAL CENTRE COMMUNITY UNIT PLAN (CUP 2005-46, DP-289)

- #4 REBAR W/ "BAUGHMAN" CAP (SET)
 - ⊙ #5 REBAR (FOUND)
 - 1/2" IRON (FOUND)
 - #5 REBAR W/ "MITEC" CAP IN THIMBLE (FOUND)
- (M) = MEASURED
 (D) = DESCRIBED
 (CM) = CALCULATED PER MEASURED INFO.
 (PS) = INFO. PER PREVIOUS SURVEY
 (C-D) = CALCULATED PER DESCRIBED INFO.
 (PRO) = PROGRAED ANGLE
 (OPA) = CALCULATED PER PROGRAED ANGLE

State of Kansas) SS We, Baughman Company, P.A., Surveyors in Sedgwick County and state do hereby certify that we have surveyed and platted "JOHNSON COMMERCIAL CENTRE", an Addition to Wichita, Sedgwick County, Kansas and that the accompanying plat is a true and correct exhibit of the property surveyed, described as follows: The east 856.8 feet of the NE1/4 of Sec. 24, Twp. 26-S, R-1-W of the 6th P.M., Sedgwick County, Kansas, except the south 1901 feet thereof, and except the north 45 feet thereof taken for highway in Condemnation Case B-14456, all being subject to road rights-of-way of record.

Existing public easements and dedications being vacated by virtue of K.S.A. 12-512(b).

Baughman Company, P.A.

Michael A. Conroy
 Michael A. Conroy
 Michael G. Conroy

This plat of "JOHNSON COMMERCIAL CENTRE", an Addition to Wichita, Sedgwick County, Kansas has been submitted to and approved by the Wichita-Sedgwick County Metropolitan Area Planning Commission, Wichita, Kansas.

Dated this _____ day of _____, 2006.
 Wichita-Sedgwick County Metropolitan Area Planning Commission

_____, Chair
 Harold L. Warner, Jr.
 _____, Secretary
 John L. Schlegel

This plat approved and all dedications shown hereon accepted by the City Council of the City of Wichita, Kansas, this _____ day of _____.

_____, Mayor
 Carlos Mayans
 _____, City Clerk
 Karen Sublett

Know all men by these presents that we, the undersigned, have caused the land in the surveyors certificate to be platted into Lots, a Block, Streets, and a Reserve, to be known as "JOHNSON COMMERCIAL CENTRE", an Addition to Wichita, Sedgwick County, Kansas. The utility easements are hereby granted as indicated for the construction and maintenance of all public utilities. The drainage and utility easements are hereby granted as indicated for drainage purposes and for the construction and maintenance of all public utilities. The wall easements are hereby granted as indicated for the construction and maintenance of a private screening wall and utility main lines and service lines shall be allowed to cross these easements. The streets are hereby dedicated to and for the use of the public. Reserve "A" is hereby reserved for open space, landscaping, drainage purposes, berms, lakes, screening walls as confined to easements, and utilities as confined to easements. Reserve "A" shall be owned and maintained by the lot owners association for the addition. Access controls shall be as depicted on the face of the plat and are hereby granted to the City of Wichita, Kansas. The Minimum Building Pad Elevations for the lowest opening to the structures shall be as indicated on the face of the plat.

South Greenwich, LLC,
 a Kansas limited liability company

Thomas D. Jacob
 Thomas D. Jacob, Member

Reviewed in accordance with K.S.A. 58-2005 on this _____ day of _____.

_____, Deputy County Surveyor
 Tricia L. Robello, L.S. #1246
 Sedgwick County, Kansas

Entered on transfer record this _____ day of _____.

_____, County Clerk
 Don Brace

State of Kansas) SS The foregoing instrument acknowledged before me, this 21st day of DECEMBER, 2006, by Thomas D. Jacob, Member of South Greenwich, LLC, a Kansas limited liability company, on behalf of the limited liability company.

JUDITH M. TERHUNE
 Notary Public, State of Kansas
 My Appt. Expires 11-7-09

Judith M. Terhune
 JUDITH M. TERHUNE, Notary Public

My App't. Exp. 11-7-09

State of Kansas) SS This is to certify that this plat has been filed for record in the office of the Register of Deeds, this _____ day of _____, at _____ o'clock _____ M.; and is duly recorded.

_____, Register of Deeds
 Bill Meek
 _____, Deputy
 Tonya Buckingham

