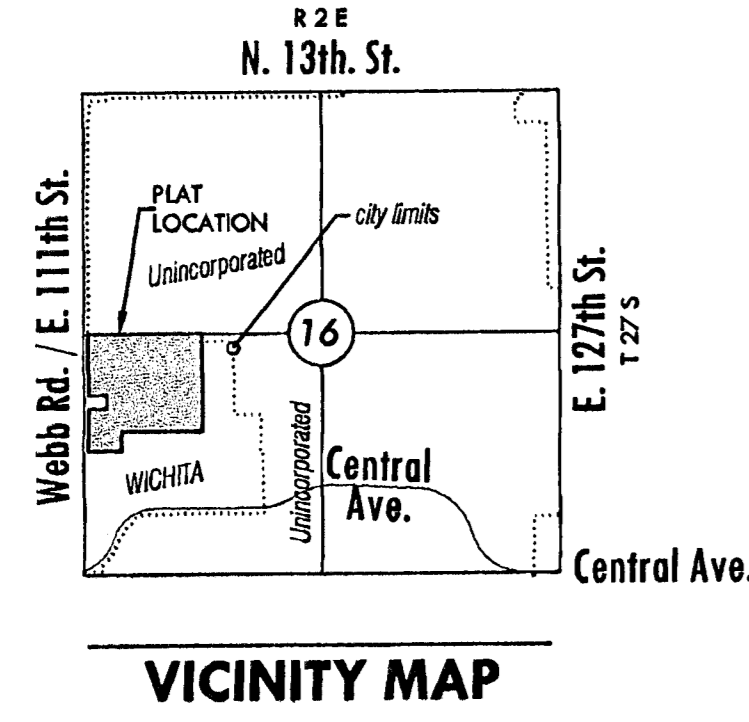


# FINAL PLAT

## CORNEJO EAST SECOND ADDITION

### AN ADDITION TO WICHITA, SEDGWICK COUNTY, KANSAS

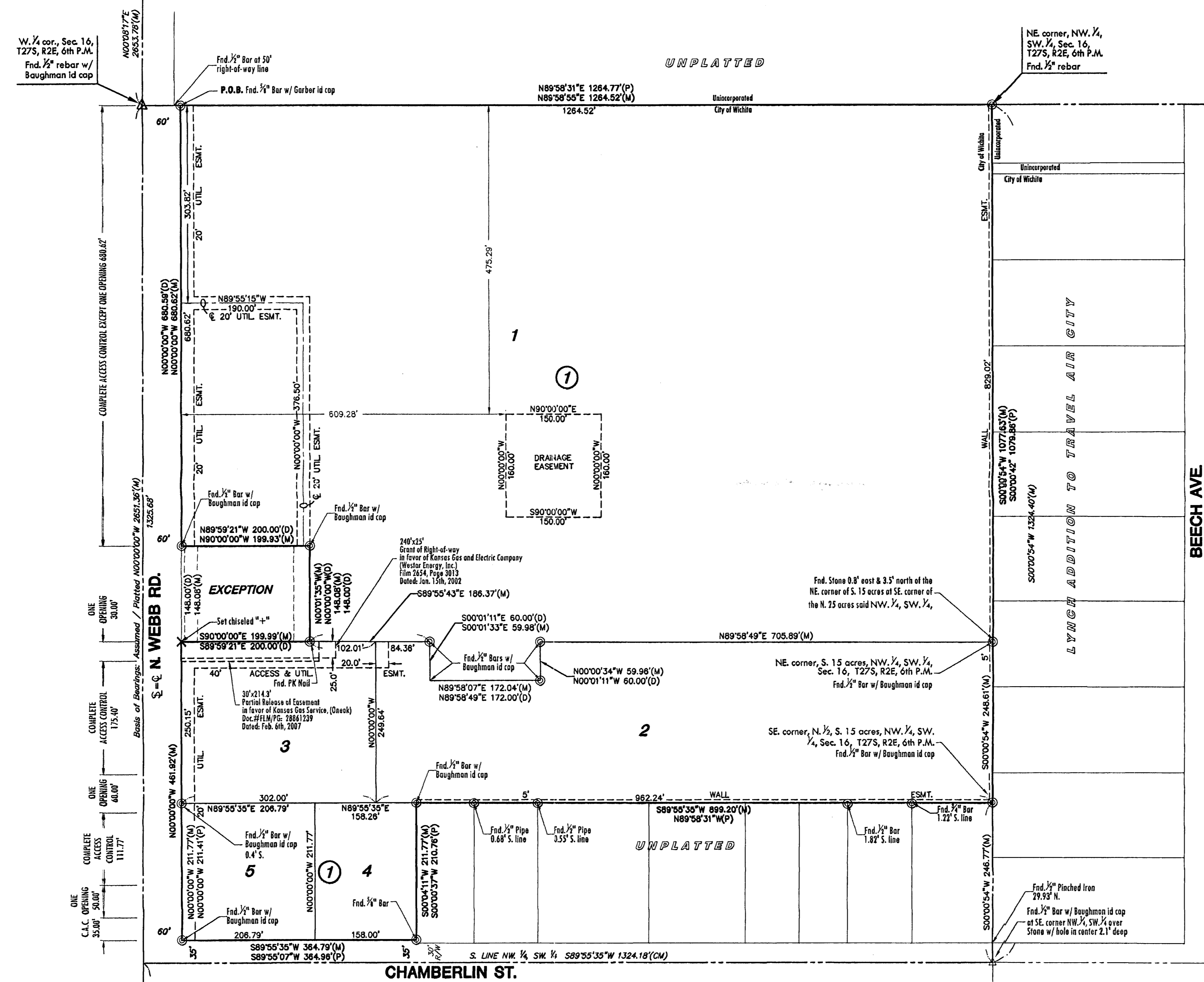


NW. cor., Sec. 16,  
T27S, R2E, 6th P.M.  
Fnd. Chiseled "4"

W. 1/4 cor., Sec. 16,  
T27S, R2E, 6th P.M.  
Fnd. 1/2" rebar w/  
Baughman id cap

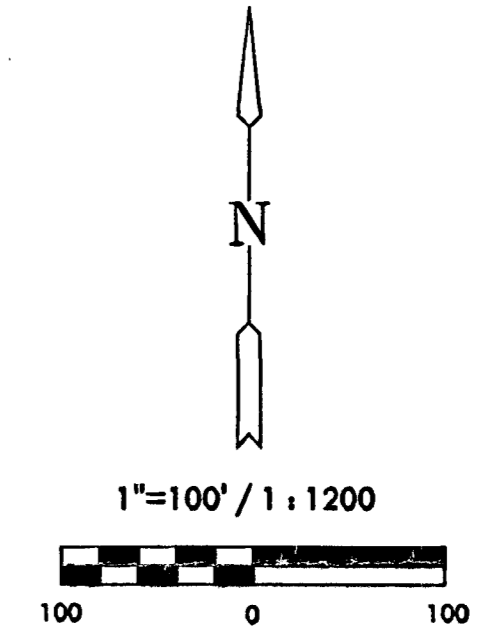
NE corner, NW 1/4,  
SW 1/4, Sec. 16,  
T27S, R2E, 6th P.M.  
Fnd. 1/2" rebar

SW corner, Sec. 16,  
T27S, R2E, 6th P.M.  
Fnd. "4" cut



UNPLATTED

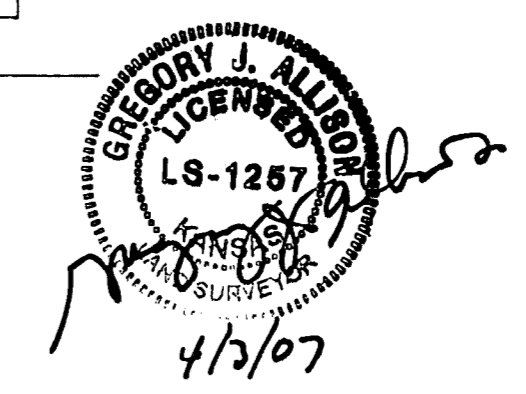
UNPLATTED



Basis of Bearings: Assumed / Platted bearing of N00°00'00"W  
along the west line of SW 1/4, Sec. 16, T27S, R2E, 6th P.M.

#### LEGEND

- Date of Survey: January, 2007
- △ = Section Corner Monument Found
  - ⊙ = Found Survey Monument
  - See annotation
  - X = Set "4" cut
  - (CM) = Calculated from measured
  - (M) = Measured
  - (P) = Platted
  - (D) = Described
  - 1 = Lot Number
  - ① = Block Number



**MKEC**  
ENGINEERING  
CONSULTANTS, INC.

411 N. WEBB ROAD  
WICHITA, KS. 67206  
316-684-9600