

FINAL TRACING REC'D

3-28-05

# FINAL PLAT SAVE-A-LOT ADDITION AN ADDITION TO WICHITA, SEDGWICK COUNTY, KANSAS

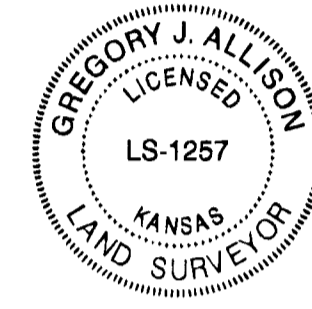
We, MKEC Engineering Consultants, Inc., a Registered Corporate Land Surveyor in Kansas, do hereby certify that we have been in responsible charge of surveying and platting of "SAVE-A-LOT ADDITION" an addition to Wichita, Sedgwick County, Kansas, into a Lot, and a Block, and a Street, the same being accurately set forth in the accompanying plat and described herein:

A replat of tract of land in the a portion of Marsh's Replat of Lots 1 through 8, Getto's 2nd Addition to Wichita, Sedgwick County, Kansas; AND ALL of, Hays and Bell Addition, Wichita, Kansas, described as follows:

All of said Hays and Bell Addition; TOGETHER WITH; Odd Lots 11, 13, 15, 17, 19, 21, 23 AND, Even Lots 14, 16, 18, 20, 22, said Marsh's Replat. AND ALSO, all alleys bound by and adjoining to said aforesaid Lots, EXCEPT the East 6 feet of the platted 12 foot alley adjoining Lot 11.

All reserves, streets, alleys, utility easements, building setbacks, access control, within the above described property are hereby vacated and replatted by virtue of K.S.A. 12-512(b).

I hereby certify that the details of this plat are correct to the best of my knowledge and belief this \_\_\_ day of \_\_\_\_\_, 2005.



Gregory J. Allison, PE, LS #1257  
MKEC Engineering Consultants, Inc.  
411 North Webb Road  
Wichita, Kansas 67206

Know all men by these presents that we the undersigned property owners of the land above set forth in the Registered Land Surveyor's Certificate, have caused the same to be surveyed and platted into a Lot, a Block, and a Street the same to be known as "SAVE-A-LOT ADDITION," an addition to Wichita, Sedgwick County, Kansas.

Easements for the construction and maintenance of public utilities and drainage, as indicated on the accompanying plat are hereby granted to the public.

The streets are hereby dedicated to and for the use of the public.

All abutters right to access to or from 13th Street over and across the South line of "SAVE-A-LOT ADDITION," are hereby granted to the appropriate governing body, provided however, Lot 1 shall have access to 13th Street at one location having full turning movements, as indicated hereon. All abutters right to access to or from Grove Avenue over and across the West line of "SAVE-A-LOT ADDITION," are hereby granted to the appropriate governing body, provided however, Lot 1 shall have access to 13th Street at one location having full turning movements, as indicated hereon.

A drainage plan has been developed for this plat and all drainage easements, right-of-way, or reserves shall remain at established grades or as modified with the approval of the applicable City or County Engineer, and unobstructed to allow for the conveyance of storm water.

POWER COMMUNITY DEVELOPMENT CORPORATION, INC.

\_\_\_\_\_, President and CEO  
James W. Arbertha, President and CEO

STATE OF KANSAS, SEDGWICK COUNTY) ss:

This instrument was acknowledged before me on \_\_\_ day of \_\_\_\_\_, 2005, by James W. Arbertha, President and CEO, Power Community Development Corporation, Inc.

IN WITNESS WHEREOF, I have hereunto set my hand and affixed my official seal, the day and year last above written.

\_\_\_\_\_, Notary Public  
My Term Expires: \_\_\_\_\_  
Sign and print below

This plat of "SAVE-A-LOT ADDITION" has been submitted to and approved by the Wichita-Sedgwick County Metropolitan Area Planning Commission, Wichita, Kansas.

Dated this \_\_\_ day of \_\_\_\_\_, 2005

WICHITA-SEDGWICK COUNTY METROPOLITAN AREA PLANNING COMMISSION

\_\_\_\_\_, Chair  
Morris K. Dunlap, Chair  
Attest:  
\_\_\_\_\_, Secretary  
John L. Schlegel, Secretary

At the direction of the City Council.

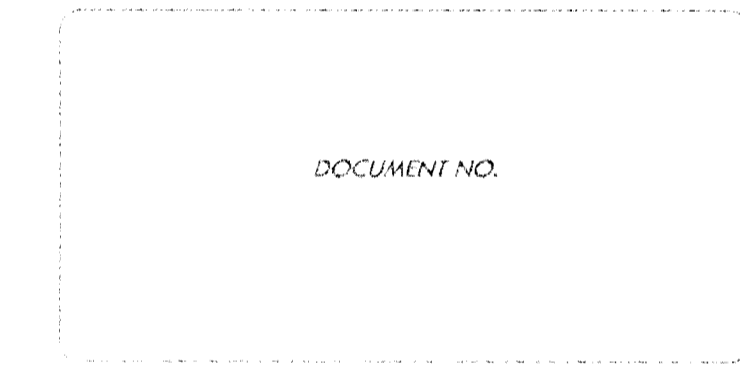
\_\_\_\_\_, Mayor  
Carlos Mayans, Mayor  
Attest:  
\_\_\_\_\_, City Clerk  
Karen Sublett, City Clerk

STATE OF KANSAS, SEDGWICK COUNTY) ss:

Entered on transfer record this \_\_\_ day of \_\_\_\_\_, 2005

\_\_\_\_\_, County Clerk  
Don Brace, County Clerk

This is to certify that this instrument was filed for record in the Register of Deeds office this \_\_\_ day of \_\_\_\_\_, 2005, at \_\_\_\_\_ o'clock \_\_M, and is duly recorded.

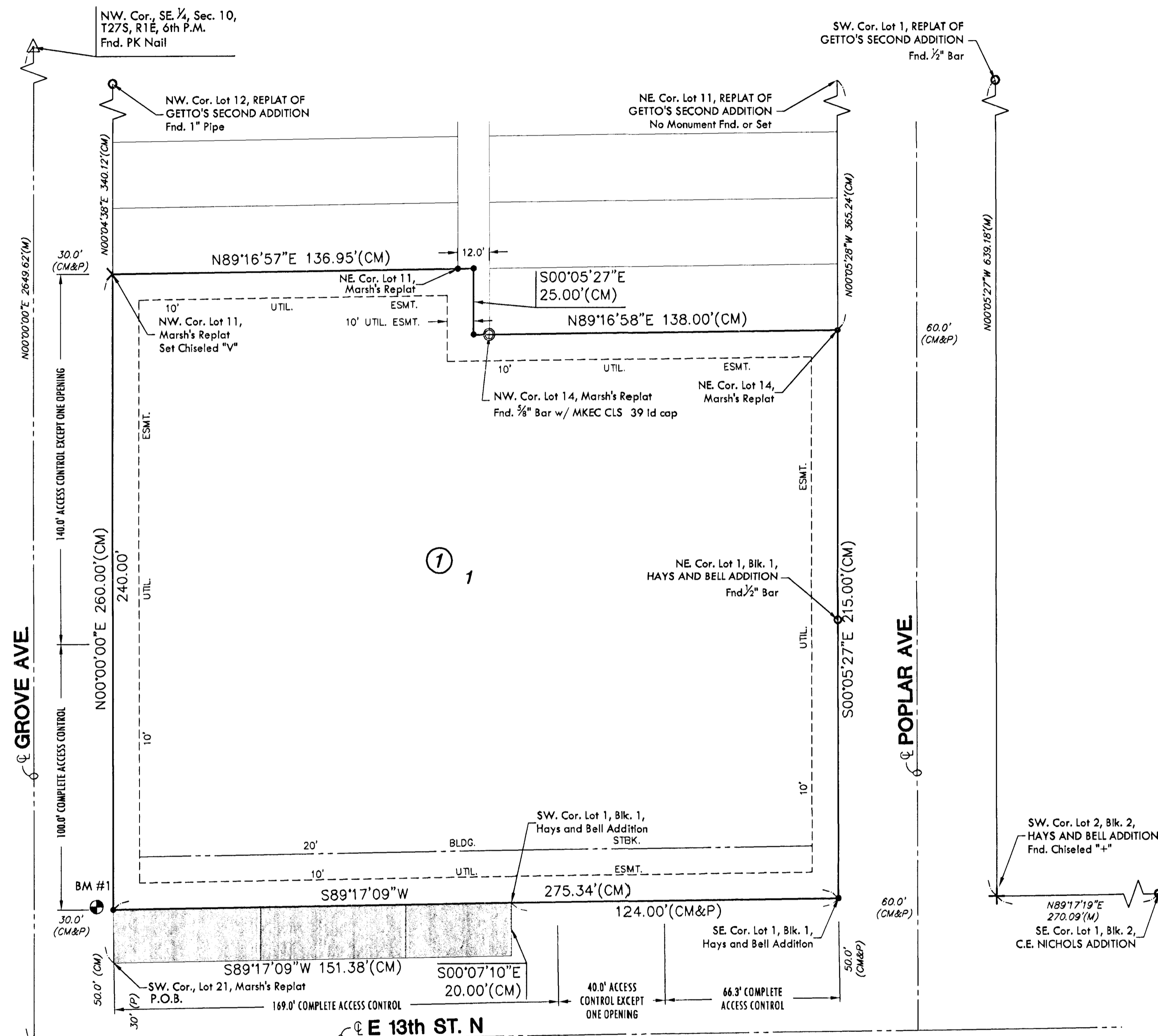


\_\_\_\_\_, Register of Deeds  
Bill Meek, Register of Deeds

Attest:  
\_\_\_\_\_, Deputy  
Tonya E. Buckingham, Deputy

Reviewed in accordance with K.S.A. 58-2005 on this \_\_\_ day of \_\_\_\_\_, 2005.

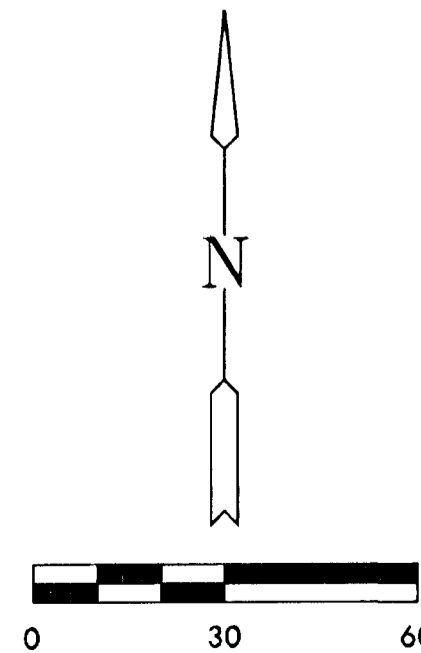
\_\_\_\_\_, Deputy County Surveyor  
Tricia L. Robello, LS #1246  
Deputy County Surveyor  
Sedgwick County, Kansas



SW. Cor., SE 1/4, Sec. 10,  
T27S, R1E, 6th P.M.  
Fnd. 1/2" Bar In Thimble

### BENCH MARK

BM #1 C.O.W. Disk on base of signal light pole, NE. corner of 13th and Grove St.  
Elev. = 1307.59 (NGVD)  
120.19 (City)



### LEGEND

- △ = Section Corner Monument Found
- = Found Survey Monument (see annotation for type)
- = Set 3/8" Rebar w/ MKEC CLS 39 id. cap
- (M) = Measured
- (P) = Platted
- (CM) = Calculated from measured
- ▭ = 20' Street Dedication

12/27/2004 2:37:38 PM CST

