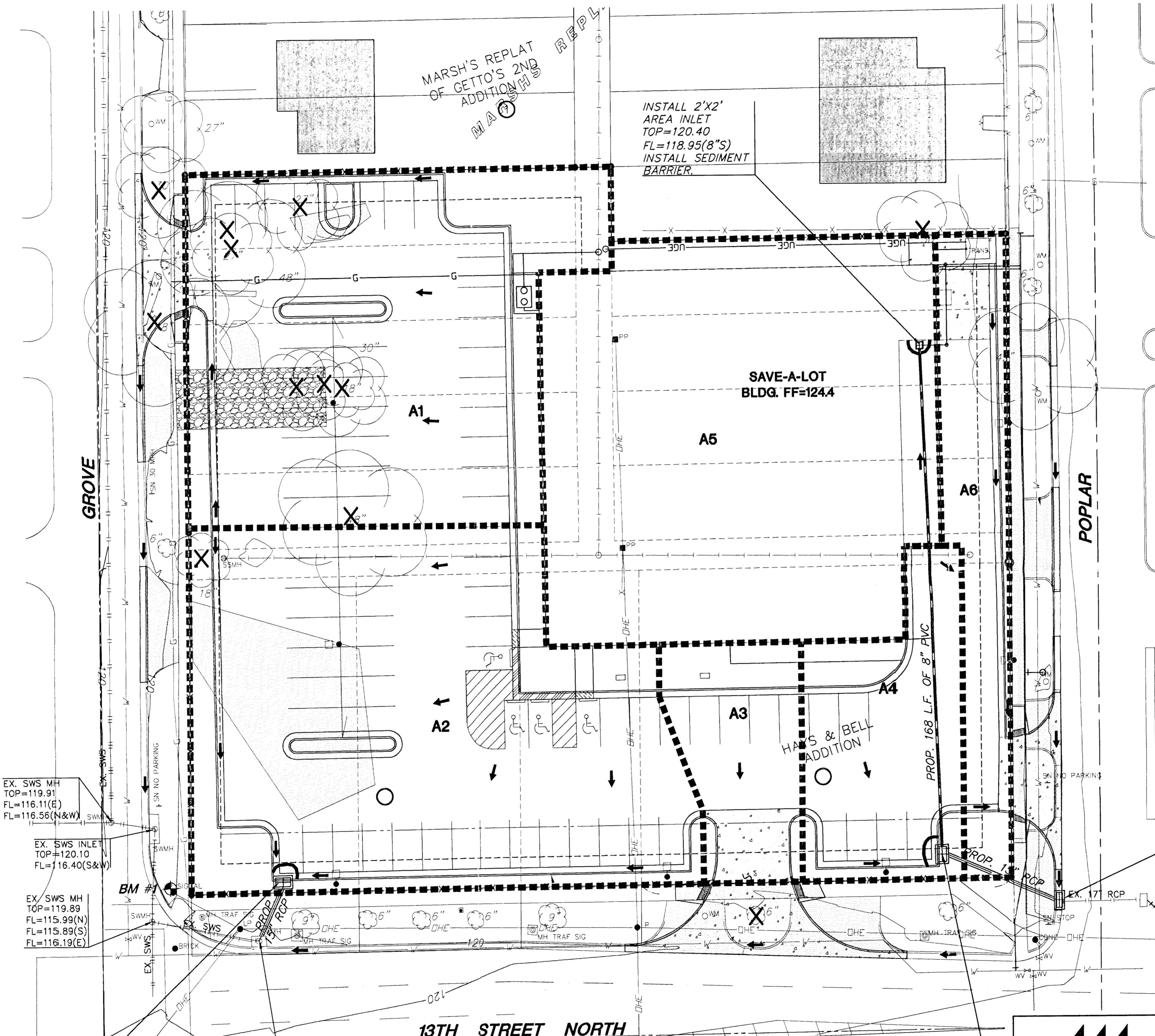


GENERAL NOTES

- UNLESS SHOWN OR STATED OTHERWISE ON THESE DRAWINGS, MATERIALS AND CONSTRUCTION SHALL BE IN ACCORDANCE WITH CITY OF WICHITA STANDARD SPECIFICATIONS.
- CONTRACTOR WILL BE REQUIRED TO PROVIDE A MINIMUM ADVANCE NOTICE OF SEVENTY-TWO (72) HOURS TO UTILITY COMPANIES PRIOR TO STARTING ANY EXCAVATION AS FOLLOWS:
KANSAS ONE-CALL 1-800-344-7233
OR 687-2470 (LOCAL WICHITA)
- THE CONTRACTOR MUST NOTIFY THE FOLLOWING IN CASE OF AN EMERGENCY:
SBC (TELEPHONE) 800-870-8390
COX COMMUNICATIONS (CABLE) 262-0661
WESTAR (ELECTRIC) 383-8600
KANSAS GAS SERVICE (GAS) 832-3101
CITY OF WICHITA WATER & SEWER MAINT. 262-6000
AQUILA (GAS) 946-0096
- THE CONTRACTOR SHALL BE RESPONSIBLE FOR PRESERVING PROPERTY IRONS. THE CONTRACTOR WILL BE REQUIRED TO RE-ESTABLISH ANY PROPERTY IRONS WHICH ARE DAMAGED OR DESTROYED BY HIS CONSTRUCTION OPERATIONS. SUCH IRONS SHALL BE RE-ESTABLISHED BY A LICENSED LAND SURVEYOR IN ACCORDANCE WITH STATE LAWS.
- EXISTING UTILITIES AND THEIR LOCATIONS, AS SHOWN ON THE PLANS REPRESENT THE BEST INFORMATION OBTAINABLE FOR DESIGN. LOCATION INFORMATION HAS BEEN OBTAINED FROM THE VARIOUS UTILITY COMPANIES AND IS EITHER FROM COMPANY RECORD DRAWINGS OR COMPANY PROVIDED FIELD LOCATIONS. THE PLAN LOCATIONS SHOWN ARE NOT GUARANTEED. ADDITIONAL EXISTING UTILITIES MAY ALSO BE ENCOUNTERED.
- RUBBLE FROM THE REMOVAL OF MISCELLANEOUS STRUCTURES AND EXCESS EXCAVATION WHICH IS TO BE WASTED SHALL BE DISPOSED OF ON SITES TO BE PROVIDED BY THE CONTRACTOR. THESE SITES SHALL BE APPROVED BY THE ENGINEER AS TO SUITABILITY, APPEARANCE AND SITE LOCATION. LOCATIONS THAT, IN THE OPINION OF THE ENGINEER, WILL LEAVE AN UNSIGHTLY APPEARANCE WILL NOT BE APPROVED. ALL DISPOSAL SITES MUST BE APPROVED BY THE KANSAS DEPARTMENT OF HEALTH AND ENVIRONMENT. MATERIAL EITHER STOCKPILED OR DISPOSED OF IN A FLOOD PLAIN WOULD REQUIRE A KANSAS STATE BOARD OF AGRICULTURE PERMIT. ANY MATERIAL DUMPED IN WATERS OF THE UNITED STATES OR WETLANDS IS SUBJECT TO U.S. CORPS OF ENGINEERS PERMITTING REGULATIONS. ANY MATERIAL BURIED OR STOCKPILED BEYOND APPROVED CONSTRUCTION LIMITS WOULD REQUIRE ADDITIONAL ARCHAEOLOGICAL INVESTIGATIONS UNLESS BURIED IN A PREVIOUSLY APPROVED BORROW LOCATION.
- A SAW CUT OF AT LEAST ONE-HALF THE DEPTH OF THE EXISTING SURFACE COURSES OR ONE-FOURTH THE DEPTH OF THE EXISTING TOTAL PAVEMENT THICKNESS SHALL BE PROVIDED AT LOCATIONS WHERE PROPOSED CONSTRUCTION ADJUTS AN EXISTING SURFACE OR PAVEMENT FOR WHICH PARTIAL REMOVAL OF THAT SURFACE OR PAVEMENT IS REQUIRED. SAW JOINT TO FACILITATE REMOVAL WITHIN THREE (3) FEET OF EXISTING JOINTS WILL NOT BE PERMITTED AND FOR SUCH INSTANCES THE LIMITS OF REMOVAL SHALL EXTEND TO THE EXISTING JOINT. SUCH SAW CUTS WILL NOT BE PAID FOR DIRECTLY AND THIS COST SHALL BE CONSIDERED AS SUBSIDIARY TO THE REMOVAL OF SURFACE OR PAVEMENT.
- CONTRACTOR SHALL REMOVE ALL CONCRETE PAVEMENT, SIDEWALKS, SLABS FROM AREAS OF PROPOSED IMPROVEMENTS, AND LEGALLY DISPOSE OF OFF SITE. (SEE NOTE 6).
- ALL FOOTINGS AND/OR FOUNDATIONS LOCATED WITHIN THE CONSTRUCTION LIMITS SHALL BE REMOVED TO A MINIMUM DEPTH OF 18" BELOW SUBGRADE IN AREAS TO BE PAVED OR REMOVED COMPLETELY IN AREAS TO BE SEEDED.
- TREES/SHRUBS ARE AN IMPORTANT ASSET TO THIS DEVELOPMENT. ONLY TREES/SHRUBS WITH TRUNKS LYING WITHIN THE PAVEMENT AREA MAY BE REMOVED. EVERY EFFORT SHALL BE MADE TO SAVE ALL OTHERS OUTSIDE THE CURB/SIDEWALK LINES.
- EQUIPMENT AND CONSTRUCTION MATERIALS SHALL REMAIN OUT OF AND AWAY FROM TREE DRIFLINES WHEREVER POSSIBLE SO AS NOT TO COMPACT THE ROOT ZONE OR DAMAGE THE TREE.
- CONTRACTOR SHALL COORDINATE WITH ENGINEER ON THE REMOVAL OF TREES/SHRUBS OUTSIDE BACK OF CURB/SIDEWALK. NO TREES/SHRUBS SHALL BE REMOVED PRIOR TO A MEETING ON SITE WITH ENGINEER.
- CONTRACTOR SHALL BE RESPONSIBLE FOR THE COORDINATION AND COST ASSOCIATED WITH EXTENSION, RELOCATION, ABANDONMENT AND/OR REMOVAL OF ALL UTILITIES. ARRANGEMENTS SHALL BE MADE WITH UTILITY COMPANIES AND ALL FEES SHALL BE PAID BY THE CONTRACTOR.
- MKEC WILL PROVIDE CONSTRUCTION PLANS PER CITY OF WICHITA REQUIREMENTS FOR THE INSTALLATION OF SANITARY SEWER, STORMWATER SEWER (15" AND LARGER) AND WATER MAIN. CONTRACTOR WILL BE RESPONSIBLE FOR INSTALLATION AND CITY REQUIRED STAKING, INSPECTION AND AS BUILT DRAWINGS.
- CONTRACTOR SHALL REFER TO "GEOTECHNICAL ENGINEERING REPORT" FOR SUBSURFACE CONDITIONS AND TREATMENT.
- REFER TO "SITE SURVEY PLAN" (SHEET SS1.1) FOR FURTHER DETAIL ON EXISTING SITE CONDITIONS.

SW COR., of the SE 1/4 of SEC. 10, T27S, R1E, of the 6th Principle Meridian.



LEGAL

ALL OF MARSH'S REPLAT, WICHITA, KANSAS. AND ALSO; LOT 1, BLOCK 1, HAYS AND BELL ADDITION, WICHITA, KANSAS.

BENCHMARKS

- BM #1 C.O.W. DISK ON SIGNAL LIGHT POLE NE CORNER OF 13TH ST. AND GROVE ST. ELEV.=120.19 (CITY DATUM)
- BM #2 "G" TO NE CORNER OF 13TH ST. N. & POPLAR ST. NORTH ON RETURN OF DRV. ELEV.=121.52 (CITY DATUM)

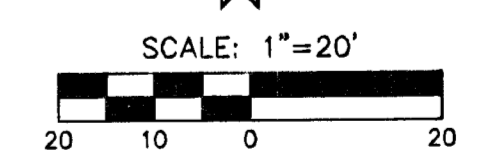
SITE NOTES

PLAT AREA - 1.93 ACRES MORE OR LESS.
ZONING: "TF"-3 & "GO" (EXISTING)
"LC" (PROPOSED)

LEGEND

- PAVEMENT/SIDEWALK, SAWCUT & REMOVAL (BC-BC)
- PROPOSED REINF. CONCRETE PVMT.
- TREE/SHRUB TO BE REMOVED
- PROPOSED TOP OF CURB & GUTTER FLOW LINE ELEVATIONS
- RAINLEADER
- INLET SEDIMENT BARRIER
- CONSTRUCTION ENTRY
- LINEAR SEDIMENT BARRIER

REMOVE EXIST. INLET TOP
REPLACE W/TYPE II
EX. GRATE TOP=120.51
PROP. INLET TOP=120.80
FL=118.00(W)
(SEE NOTE 14)



INSTALL TYPE 1 CURB INLET
TOP=120.40
FL=118.00(15"S)
(5'X3')
INSTALL 21 L.F. OF 15" RCP. TIE-INTO EXISTING INLET (SW). INSTALL SEDIMENT BARRIER & PVMT. UNDER DRAIN. (SEE NOTE 14)

EX. SWS INLET
TOP=119.92
FL=117.00(15"N)
FL=116.62(W)

INSTALL TYPE 1 CURB INLET
TOP=120.6
FL IN=118.25(8"N)
FL OUT=118.17(15"E)
(5'X3')
INSTALL 43 L.F. OF 15" RCP. TIE-INTO EXISTING INLET (SE). INSTALL SEDIMENT BARRIER & PVMT. UNDER DRAIN (SEE NOTE 14)



SAVE-A-LOT		
PROJECT NAME		
DRAINAGE AND UTILITY PLAN		
SHEET TITLE		
KLA	AJK	GJA
DESIGN BY:	DRAWN BY:	CHECKED BY:
JANUARY 2005	03002	1 / 1
DATE	JOB NO.	SHEET/OF

K:\MEPS\2003\SAVE-A-LOT\CIVIL\DWG\RAINAGE DRAINAGE AND UTILITY PLAN.DWG