

LEGEND

- △ - Sec. Corner
- ⊙ - Fnd. Prop. Corner
- SIGN
- GATE
- TREES
- EDGE OF TREES
- - POLE - POLE
- FH - FIRE HYDRANT
- WV - WATER VALVE
- WM - WATER METER
- TR - TELEPHONE RISER
- GM - GAS METER
- SSMH - SANITARY SEWER MANHOLE
- PG - POWER POLE/GUY ANCHOR
- EB - ELECTRIC BOX
- FENCE
- STORM SEWER PIPE
- WATER LINE
- SANITARY SEWER LINE
- GAS LINE
- TELEPHONE LINE
- OVERHEAD ELECTRIC
- - 20 foot street dedication

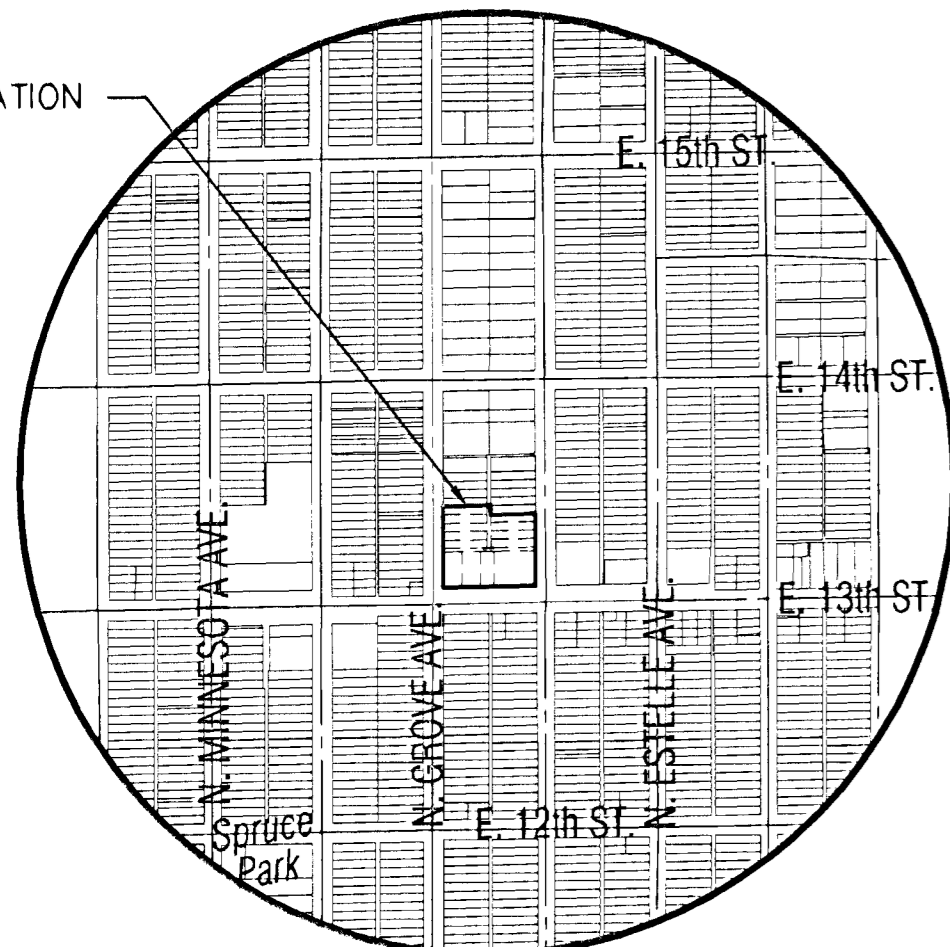
NOTES

1. ZONING: Existing - TF-3, LC, and GC
Proposed - LC and GC
3. PUBLIC UTILITIES: Shall be relocated site by petitions
4. LEGAL DESCRIPTION: See attached
5. EXISTING USE: Vacant Lots
6. PLAT AREA: 1.44 AC
7. SURVEY DATE: May 8th, 2004 (by MKEC)
8. MINIMUM PADS: Are as shown on the Final Drainage Plan
9. LOT TOTAL (7) - Lots 1 - LC Zoning District
SE 1/4 - GC Zoning District
10. RESERVES: None

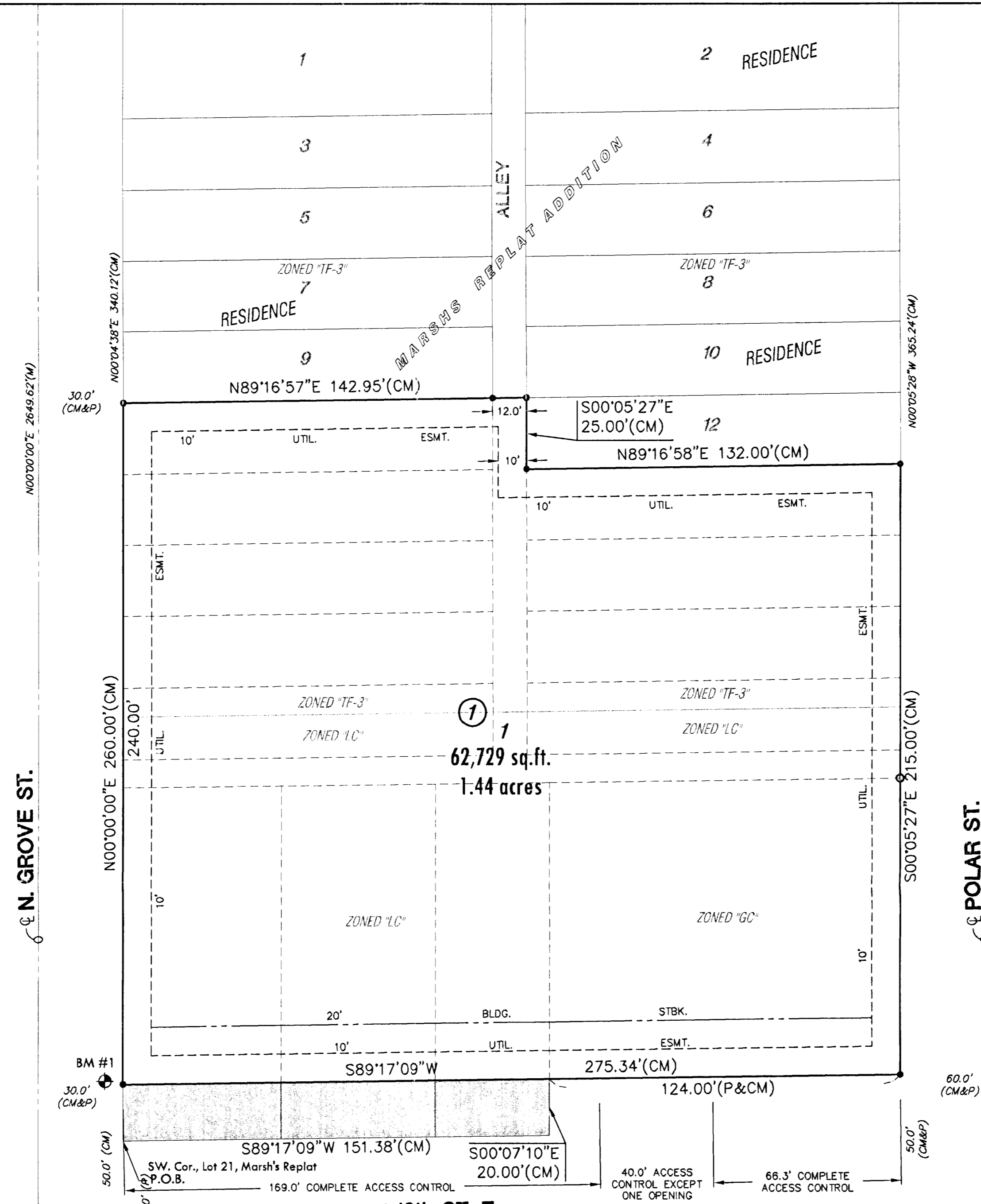
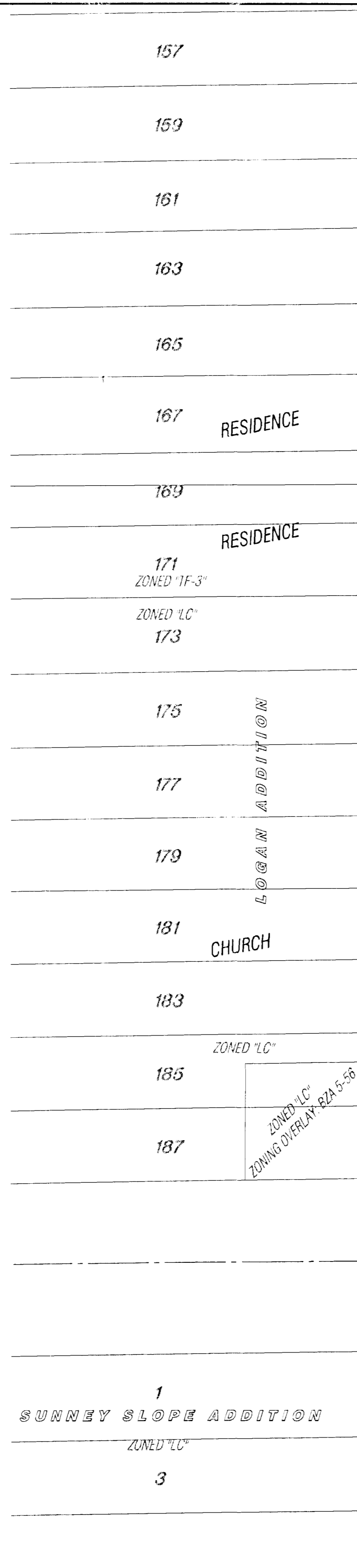
BENCH MARK

BM #1 C.O.W. Disk on base of signal light pole, NE corner of 13th and Grove St.
Elev. = 1307.59 (NGVD)
120.19 (City)

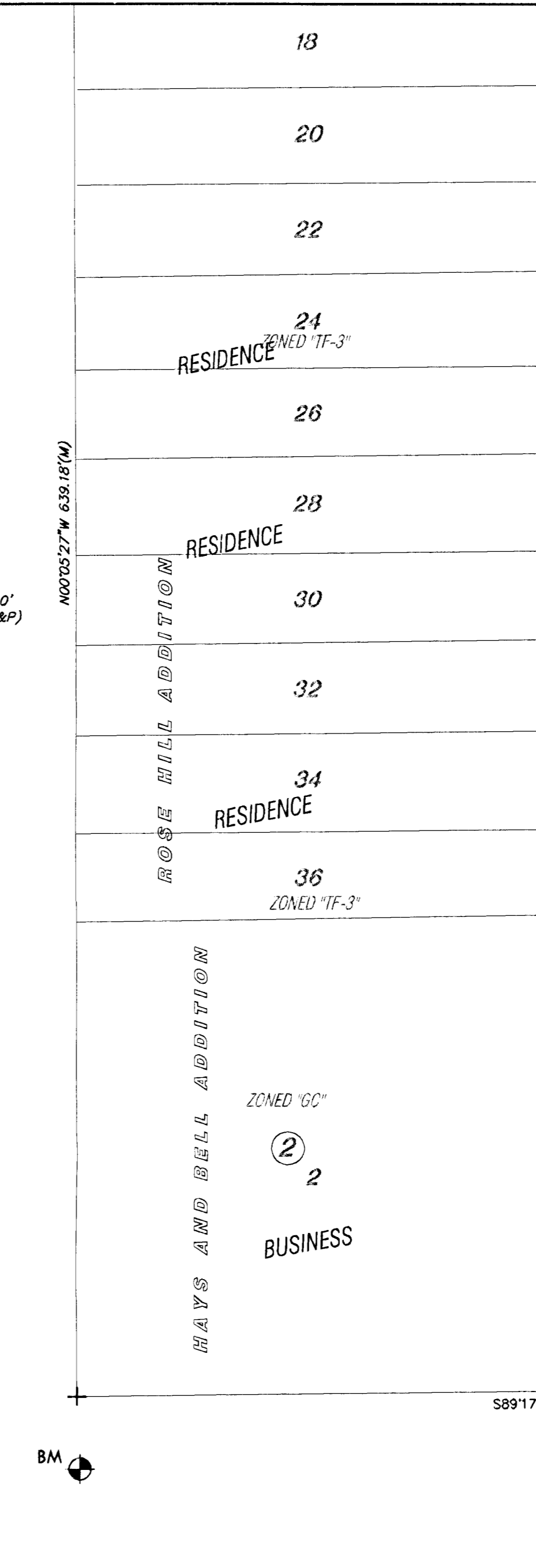
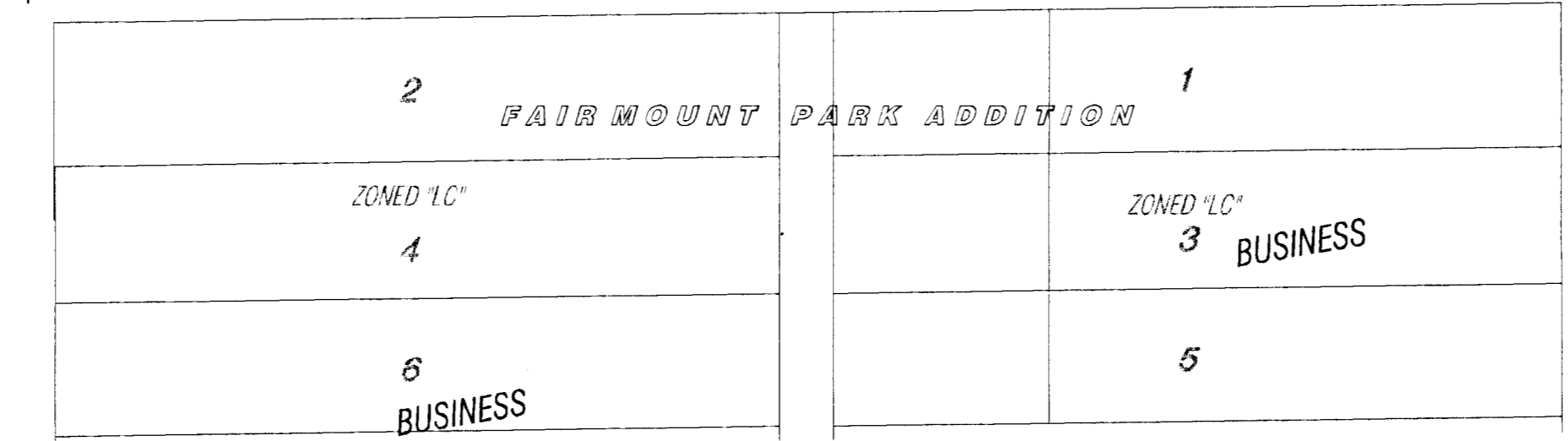
PLAT LOCATION



VICINITY MAP



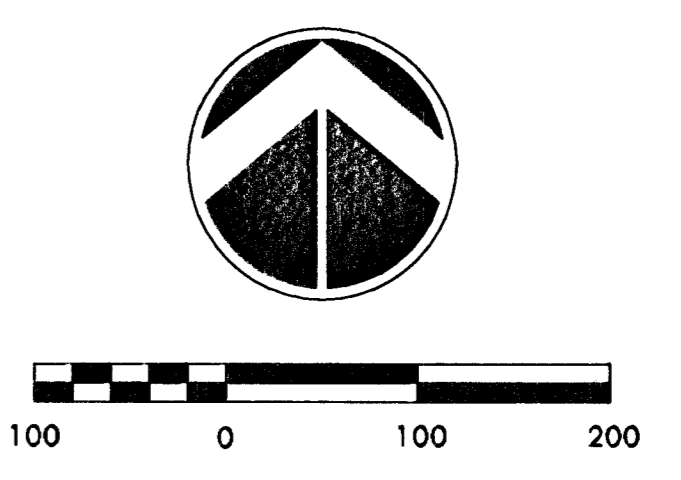
SW. Cor., SE 1/4, Sec. 10,
T27S, R1E, 6th P.M.
Fnd. 1/2" Bar in Thimble



LEGAL DESCRIPTION

A replat of tract of land in the portions of Marsh's Replat of Lots 1 through 8, Getto's 2nd Addition to Wichita, Sedgwick County, Kansas; AND ALL of, Hays and Bell Addition, Wichita, Kansas, described as follows:

All of said Hays and Bell Addition;
TOGETHER WITH;
Odd Lots 11, 13, 15, 17, 19, 21, 23 AND Even Lots 14, 16, 18, 20, 22, said Marsh's Replat.
AND ALSO, all alleys bound by and adjacent to said aforesaid Lots.



PRELIMINARY PLAT
SAVE-A-LOT ADDITION

OWNER / DEVELOPER: Attn. James W. Arbertha, Sr., POWER COMMUNITY DEVELOPMENT CORPORATION 1802 N. HYDRAULIC WICHITA, KS 67214-0000 (316) 267-3036 **Date: January 14th, 2005**



K:\MPEPS\2003\03002 Save-a-lot\GMA\Draw\Prop\030022pre.dwg 1/10/2005 1:04:05 PM CST