

# SAVINA 5TH ADDITION WICHITA, SEDGWICK COUNTY, KANSAS

State of Kansas) SS  
Sedgwick County) We, Baughman Company, P.A., Surveyors in  
aforesaid county and state do hereby certify that we have surveyed and  
platted "SAVINA 5TH ADDITION", Wichita, Sedgwick County, Kansas and that  
the accompanying plat is a true and correct exhibit of the property  
surveyed, described as a plat of Lot 1, Savina 4th Addition, Wichita,  
Sedgwick County, Kansas.

Existing public easements and dedications  
being vacated by virtue of K.S.A. 12-512(b).

Baughman Company, P.A.

Michael G. Conroy, Surveyor

Know all men by these presents that we, the undersigned, have caused the land in the surveyors certificate to be  
platted into Lots, Blocks, and Streets, and Reserves to be known as  
"SAVINA 5TH ADDITION", Wichita, Sedgwick County, Kansas. The drainage  
and utility easements are hereby granted as indicated for drainage  
purposes and for the construction and maintenance of all public utilities.  
The street, drainage, and utility easements are hereby granted as  
indicated for street related purposes, for drainage purposes, and for the  
construction and maintenance of all public utilities. The streets are  
hereby dedicated to and for the use of the public. Reserve "A" is hereby  
reserved for open space, landscaping, drainage purposes, utilities, entry  
monuments and streets. Reserve "B" is hereby reserved for open space,  
landscaping, gazebos, drainage purposes, recreational areas, playground,  
sidewalks, streets as confined to easements, and utilities as confined to  
easements. Reserves "A" and "B" shall be owned and maintained by the  
homeowners association for the addition. Access controls shall be as  
depicted on the face of the plat and are hereby granted to the City of  
Wichita, Kansas. The permitted opening locations shall be as determined  
by the City Engineer of the City of Wichita, Kansas. The Minimum Building  
Pad Elevations for the lowest opening to the structures shall be as  
indicated on the face of the plat.

Wichita Habitat for Humanity, Inc.

Linda Stewart, Executive Director

State of Kansas) SS  
Sedgwick County) The foregoing instrument acknowledged before  
me, this \_\_\_\_\_ day of \_\_\_\_\_, 2007, by Linda Stewart, Executive  
Director, of Wichita Habitat for Humanity, Inc. on behalf of the corporation.

\_\_\_\_\_, Notary Public

My App'l. Exp. \_\_\_\_\_

This plat of "SAVINA 5TH  
ADDITION", Wichita, Sedgwick County, Kansas has been submitted to and  
approved by the Wichita-Sedgwick County Metropolitan Area Planning  
Commission, Wichita, Kansas.  
Dated this \_\_\_\_\_ day of \_\_\_\_\_, 2007.  
Wichita-Sedgwick County Metropolitan Area Planning Commission

Darrell A. Downing, Chair

John L. Schlegel, Secretary

This plat approved and all dedications  
shown hereon accepted by the City Council of the City of Wichita,  
Kansas, this \_\_\_\_\_ day of \_\_\_\_\_, 2007.

Carlos Mayans, Mayor

Karen Sublett, City Clerk

Reviewed in accordance with K.S.A. 58-2005  
on this \_\_\_\_\_ day of \_\_\_\_\_, 2007.

Tricia L. Robello, L.S. #1246  
Deputy County Surveyor  
Sedgwick County, Kansas

Entered on transfer record this \_\_\_\_\_ day  
of \_\_\_\_\_, 2007.

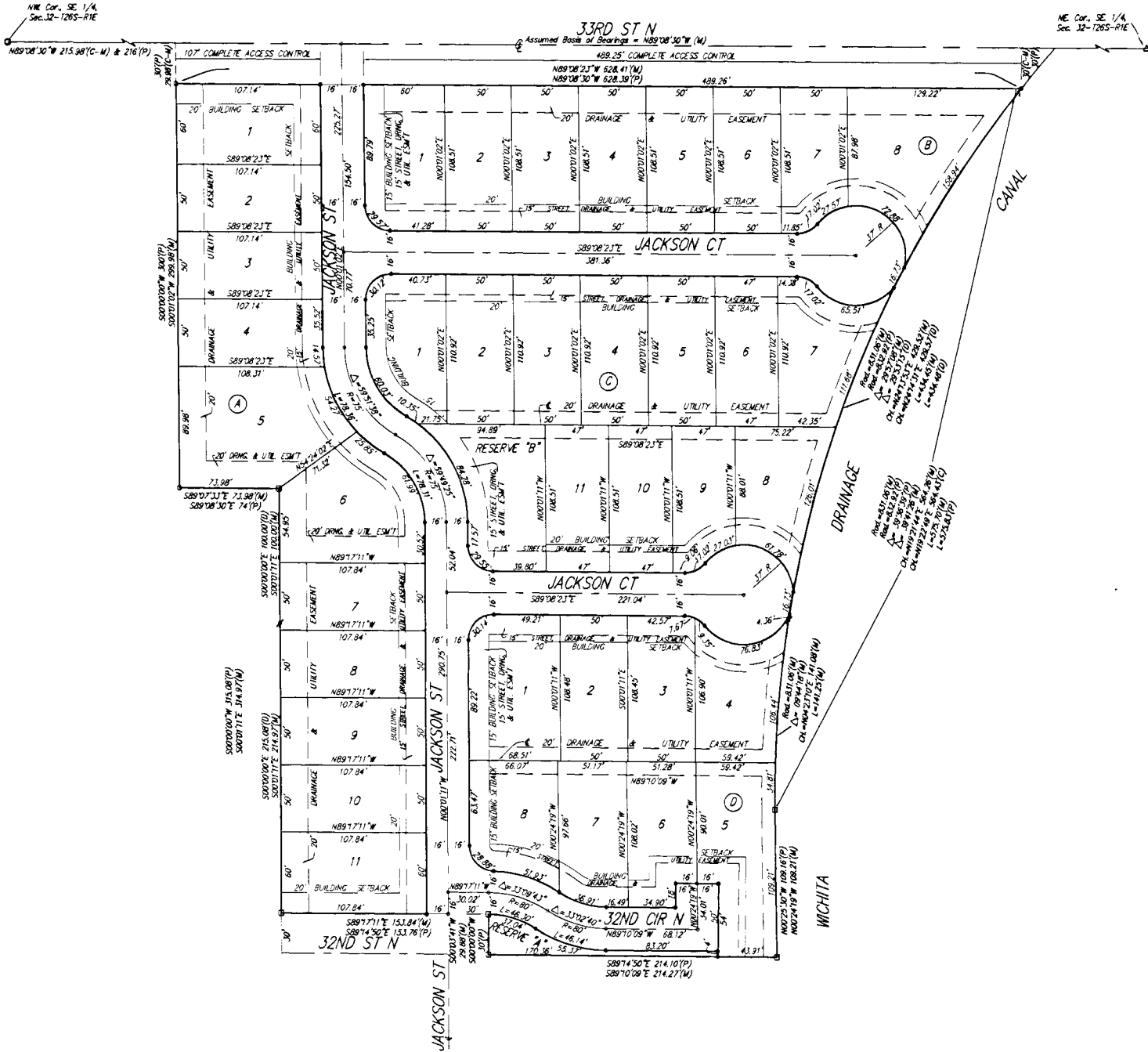
Don Broce, County Clerk

State of Kansas) SS  
Sedgwick County) This is to certify that this plat has been  
filed for record in the office of the Register of Deeds, this \_\_\_\_\_ day  
of \_\_\_\_\_, 2007 at \_\_\_\_\_ o'clock \_\_\_\_\_ M. and is duly recorded.

Bill Weisk, Register of Deeds

Tonya Buckingham, Deputy

**SAVINA 5TH ADDITION**  
Baughman Company, P.A.  
1111 S.W. 8th Street, Suite 100, Topeka, KS 66604  
Baughman SURVEYING & ENGINEERING, L.L.C.  
P. PLAT SAVINA 5TH ADDITION - 04-20-07 - 5/12/07



**BENCHMARKS**  
Arkansas and 33rd St. North  
corner benchmark  
32.00' N. south of centerline of 33rd St. Camp post  
22.00' N. east of centerline of Arkansas  
Elev = 1317.21 (Tied 29)  
corner disk NE bridge headwall 33rd and drainage canal  
Elev = 1300.58 (Tied 29)

**MINIMUM BUILDING PAD ELEVATIONS FOR  
LOWEST OPENING TO THE STRUCTURES**

| LOT  | BLOCK | ELEVATION |
|------|-------|-----------|
| 1-11 | A & C | 121.8     |
| 1-8  | B & D | 126.8     |

**NOTES**  
A drainage plan has been developed for this subdivision and is  
on file with the City of Wichita, Kansas. Drainage plans shall  
remain as depicted or as modified with the approval of the City  
Engineer of the City of Wichita, Kansas. No alterations which  
impede the flow of this drainage plan shall be allowed.

**LEGEND**  
● #4 Baughman Rebar Set  
▲ #4 Baughman Rebar Found  
○ 1/2" Iron Pipe Found  
○ 3/4" Iron Pipe Found  
○ 5/8" Iron Pipe Found  
○ 3/4" Iron Pipe in Trench Found  
○ 5/8" Iron Pipe in Trench Found

**SYMBOLS**  
(C) = Calculated  
(M) = Measured  
(P) = Potted