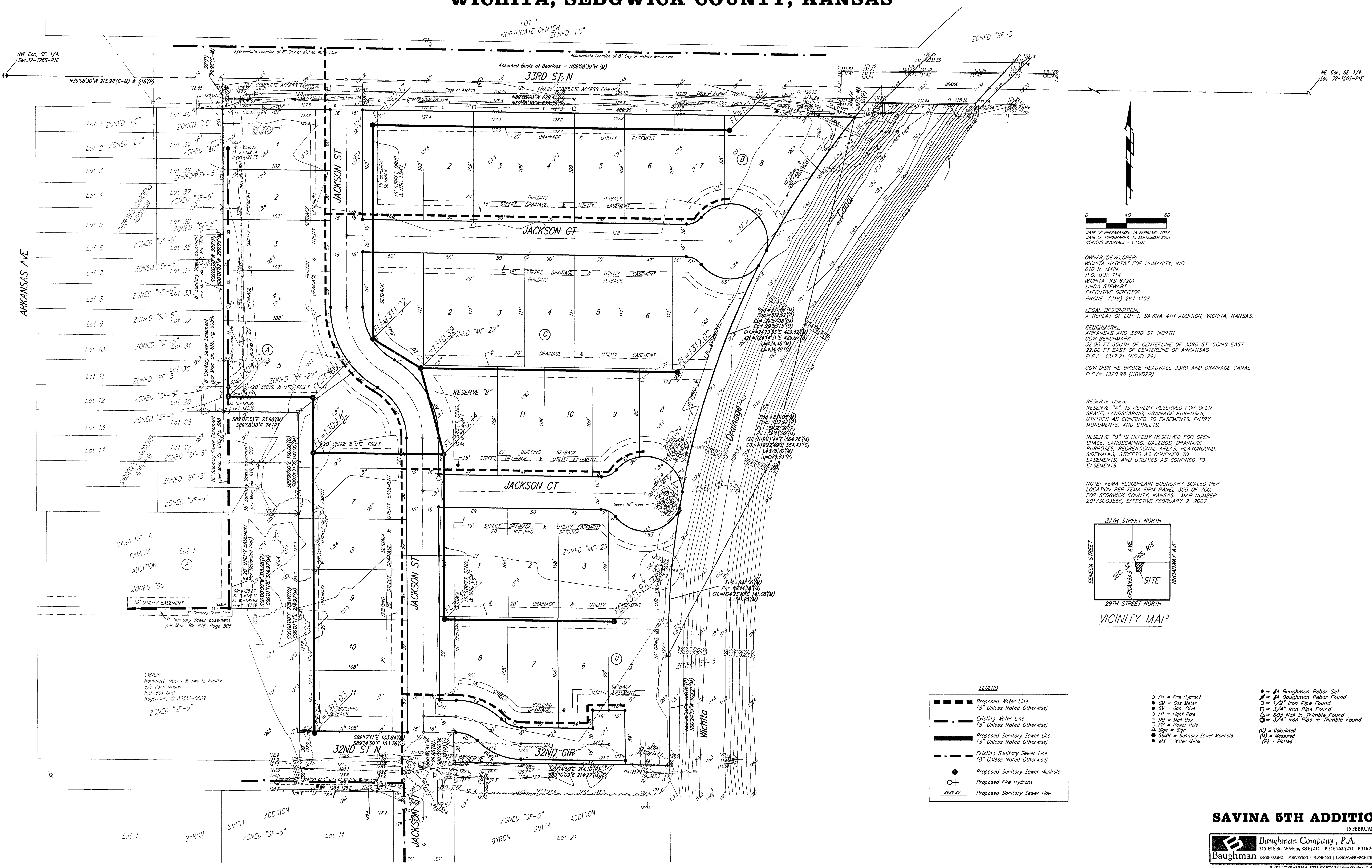


UTILITY PLAN

SAVINA 5TH ADDITION

WICHITA, SEDGWICK COUNTY, KANSAS



NE Cor., SE. 1/4,
Sec. 32-1265-RIE

Assumed Basis of Bearings = N89°08'30"W (M)

33RD ST N

LOT 1
NORTHGATE CENTER
ZONED "LC"

ZONED "SF-5"

Approximate Location of 8" City of Wichita Water Line

Approximate Location of 8" City of Wichita Sewer Line

NW Cor., SE. 1/4,
Sec. 32-1265-RIE

DATE OF PREPARATION: 16 FEBRUARY 2007
DATE OF TOPOGRAPHY: 15 SEPTEMBER 2004
CONTOUR INTERVALS = 1 FOOT

OWNER/DEVELOPER:
WICHITA HABITAT FOR HUMANITY, INC.
610 N. MAIN
P.O. BOX 114
WICHITA, KS 67201
LINDA STEWART
EXECUTIVE DIRECTOR
PHONE: (316) 264 1108

LEGAL DESCRIPTION:
A REPLAT OF LOT 1, SAVINA 4TH ADDITION, WICHITA, KANSAS.

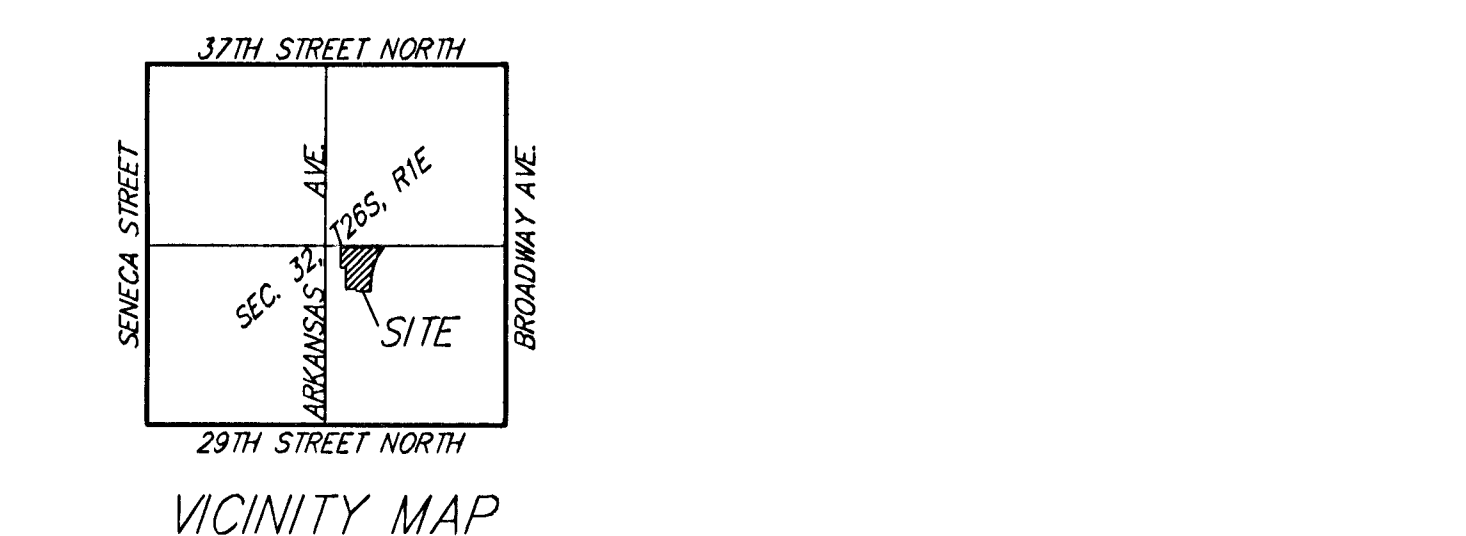
BENCHMARK:
ARKANSAS AND 33RD ST. NORTH
COW BENCHMARK
32.00 FT SOUTH OF CENTERLINE OF 33RD ST GOING EAST
22.00 FT EAST OF CENTERLINE OF ARKANSAS
ELEV = 1317.21 (NGVD 29)

COW DISK NE BRIDGE HEADWALL 33RD AND DRAINAGE CANAL
ELEV = 1320.98 (NGVD29)

RESERVE USES:
RESERVE "A" IS HEREBY RESERVED FOR OPEN SPACE, LANDSCAPING, DRAINAGE PURPOSES, UTILITIES AS CONFINED TO EASEMENTS, ENTRY MONUMENTS, AND STREETS.

RESERVE "B" IS HEREBY RESERVED FOR OPEN SPACE, LANDSCAPING, GAZEBOS, DRAINAGE PURPOSES, RECREATIONAL AREAS, PLAYGROUND, SIDEWALKS, STREETS AS CONFINED TO EASEMENTS, AND UTILITIES AS CONFINED TO EASEMENTS.

NOTE: FEMA FLOODPLAIN BOUNDARY SCALED PER LOCATION PER FEMA FIRM PANEL 305 OF 700, FOR SEDGWICK COUNTY, KANSAS. MAP NUMBER 20173C03556, EFFECTIVE FEBRUARY 2, 2007.



- LEGEND**
- Proposed Water Line (8" Unless Noted Otherwise)
 - - - Existing Water Line (8" Unless Noted Otherwise)
 - Proposed Sanitary Sewer Line (8" Unless Noted Otherwise)
 - - - Existing Sanitary Sewer Line (8" Unless Noted Otherwise)
 - Proposed Sanitary Sewer Manhole
 - ⊕ Proposed Fire Hydrant
 - XXXXXX Proposed Sanitary Sewer Flow
 - FH = Fire Hydrant
 - GU = Gas Meter
 - GV = Gas Valve
 - LP = Light Pole
 - MB = Mail Box
 - PP = Power Pole
 - Sign = Sign
 - SSMW = Sanitary Sewer Manhole
 - WM = Water Meter
 - = #4 Baughman Rebar Set
 - = #4 Baughman Rebar Found
 - = 1/2" Iron Pipe Found
 - = 3/4" Iron Pipe Found
 - = 604 Nail in Thimble Found
 - = 3/4" Iron Pipe in Thimble Found
 - (C) = Calculated
 - (M) = Measured
 - (P) = Plotted

ARKANSAS AVE

OWNER:
Hammett, Mason & Swartz Realty
c/o John Mason
P.O. Box 569
Hagerman, ID 83332-0569

SAVINA 5TH ADDITION
16 FEBRUARY 2007

Baughman Company, P.A.
315 Ella St., Wichita, KS 67211 P 316-262-1271 F 316-262-0149

ENGINEERING | SURVEYING | PLANNING | LANDSCAPE ARCHITECTURE

E:\PLAT\SAVINA 4TH SKETCH\dwg\Savina_P.dwgGED