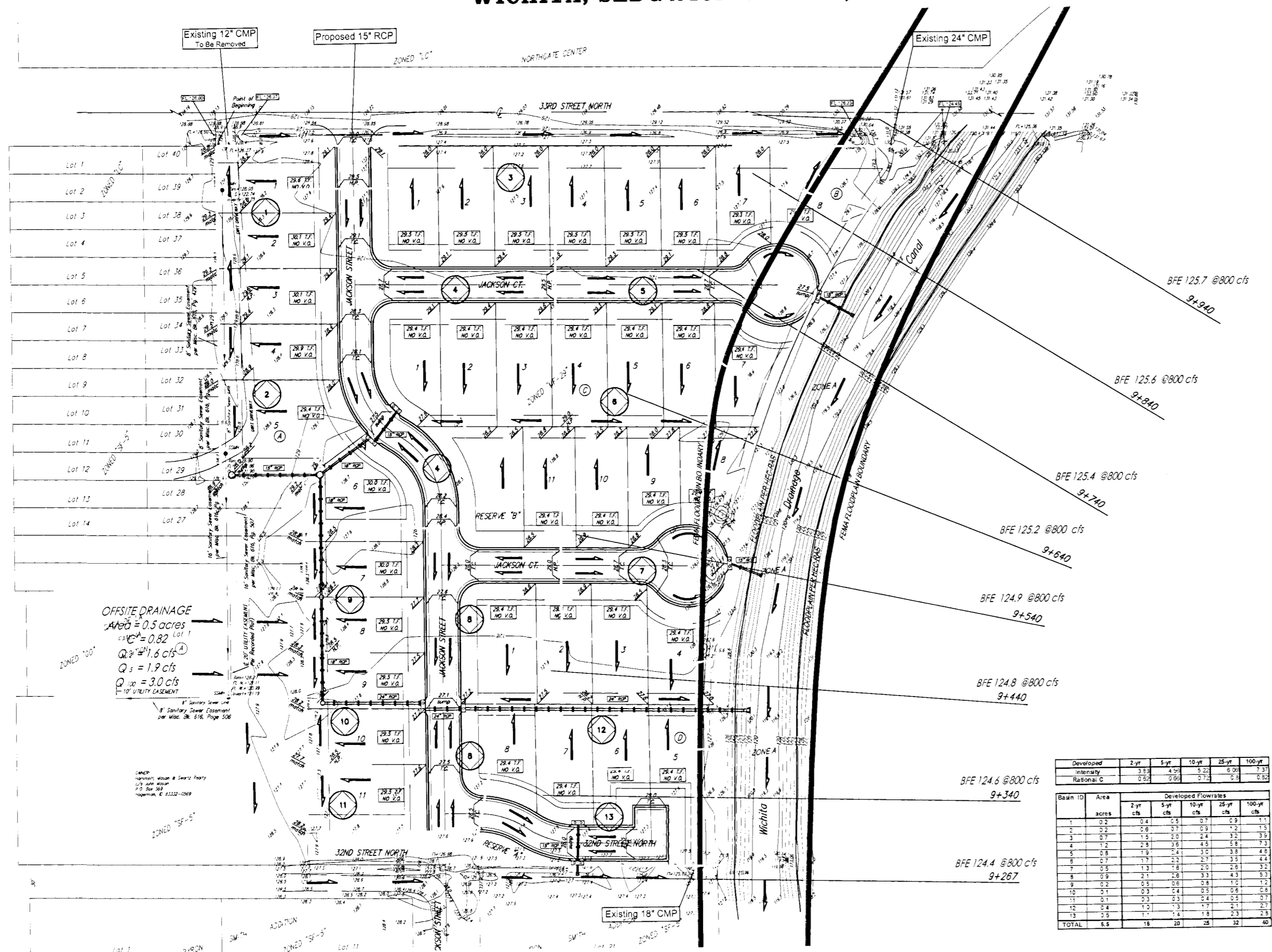
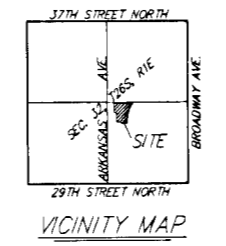


DRAINAGE & GRADING PLAN SAVINA 5TH ADDITION WICHITA, SEDGWICK COUNTY, KANSAS



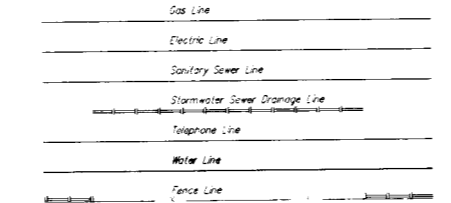
OFFSITE DRAINAGE
AREA = 0.5 acres
 $C = 0.82$
 $Q_2 = 1.5 cfs$
 $Q_3 = 1.9 cfs$
 $Q_{100} = 3.0 cfs$
1" UTILITY CASING
10' UTILITY CASING



DATE OF PREPARATION: 15 FEBRUARY 2007
DATE OF SUBMITTAL: 15 SEPTEMBER 2006
CONTRACT INTERVALS: 1 FOOT

DESIGNED BY:
BAUGHMAN COMPANY, P.A.
111 EAST W. WICHITA, KS 67202
PHONE: (316) 261-1100

RESERVE NOTES:
RESERVE 1" UTILITY CASING FOR 10' UTILITY CASING. SEE GRADE PLAN FOR 10' UTILITY CASING. SEE GRADE PLAN FOR 10' UTILITY CASING.



Developed Intensity	2-yr	5-yr	10-yr	25-yr	100-yr
Intensity	3.3	4.2	5.2	6.0	7.3
Rational C	0.82	0.86	0.77	0.6	0.52

Basin ID	Area acres	Developed Flowrates				
		2-yr cfs	5-yr cfs	10-yr cfs	25-yr cfs	100-yr cfs
1	0.2	0.4	0.5	0.7	0.9	1.1
2	0.2	0.4	0.5	0.7	0.9	1.1
3	0.7	1.3	1.6	2.4	3.2	3.9
4	1.2	2.1	2.6	4.0	5.3	6.5
5	0.8	1.4	1.8	2.7	3.6	4.4
6	0.7	1.3	1.6	2.4	3.2	3.9
7	0.5	0.9	1.1	1.6	2.1	2.6
8	0.9	1.6	2.0	3.0	4.0	4.9
9	0.2	0.4	0.5	0.7	0.9	1.1
10	0.1	0.2	0.3	0.4	0.5	0.6
11	0.1	0.2	0.3	0.4	0.5	0.6
12	0.4	0.7	0.9	1.4	1.8	2.2
13	0.5	0.9	1.1	1.6	2.1	2.6
TOTAL	6.8	12	15	23	30	37

NOTE: FEMA Boundary Scaled per location per FEMA FIRM Panel 335 of 700 for Sedgwick County, Kansas, effective February 2, 2007.

Floodplain Boundary per HEC-RAS established with flow rate of 800 cfs.

All homes are proposed to be slab-on-grade construction.

DRAINAGE & GRADING PLAN SAVINA 5TH ADDITION

21 MARCH 2007

Baughman Company, P.A.
111 East W. Wichita, KS 67202 | (316) 261-1100 | www.baughman.com