

MER

BD. OF FINANCE P. CUMBERLAND CO. D-17840-1

JOSEPH E. HALL ADDITION

ROMMEL

ST. CLAIR

EVERETT

BENNETT

BONN

HIRAM

EUCLID

GLENN

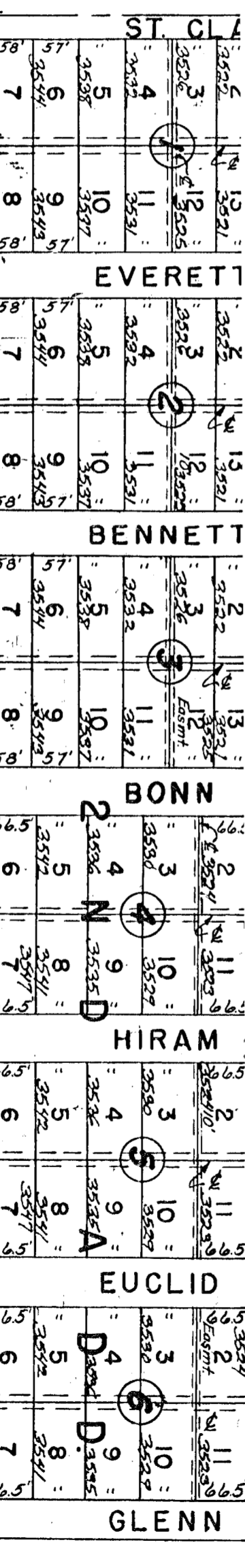
Part of D-172-A-UP

Part of D-172-A-UP

35TH

ST.

SO.



SCHRAFT

4TH

ALDITON

DEDICATION

DEDICATED FOR DRAINAGE BK-36 PG 195 10-27-72

INTERSTATE 275

130'

50'

50'

50'

50'

50'

50'

50'

50'

50'

50'

50'

50'

50'

50'

50'

50'

50'

50'

50'

50'

50'

50'

50'

50'

50'

50'

50'

50'

50'

50'

50'

50'

50'

50'

50'

50'

50'

50'

50'

50'

50'

50'

50'

50'

50'