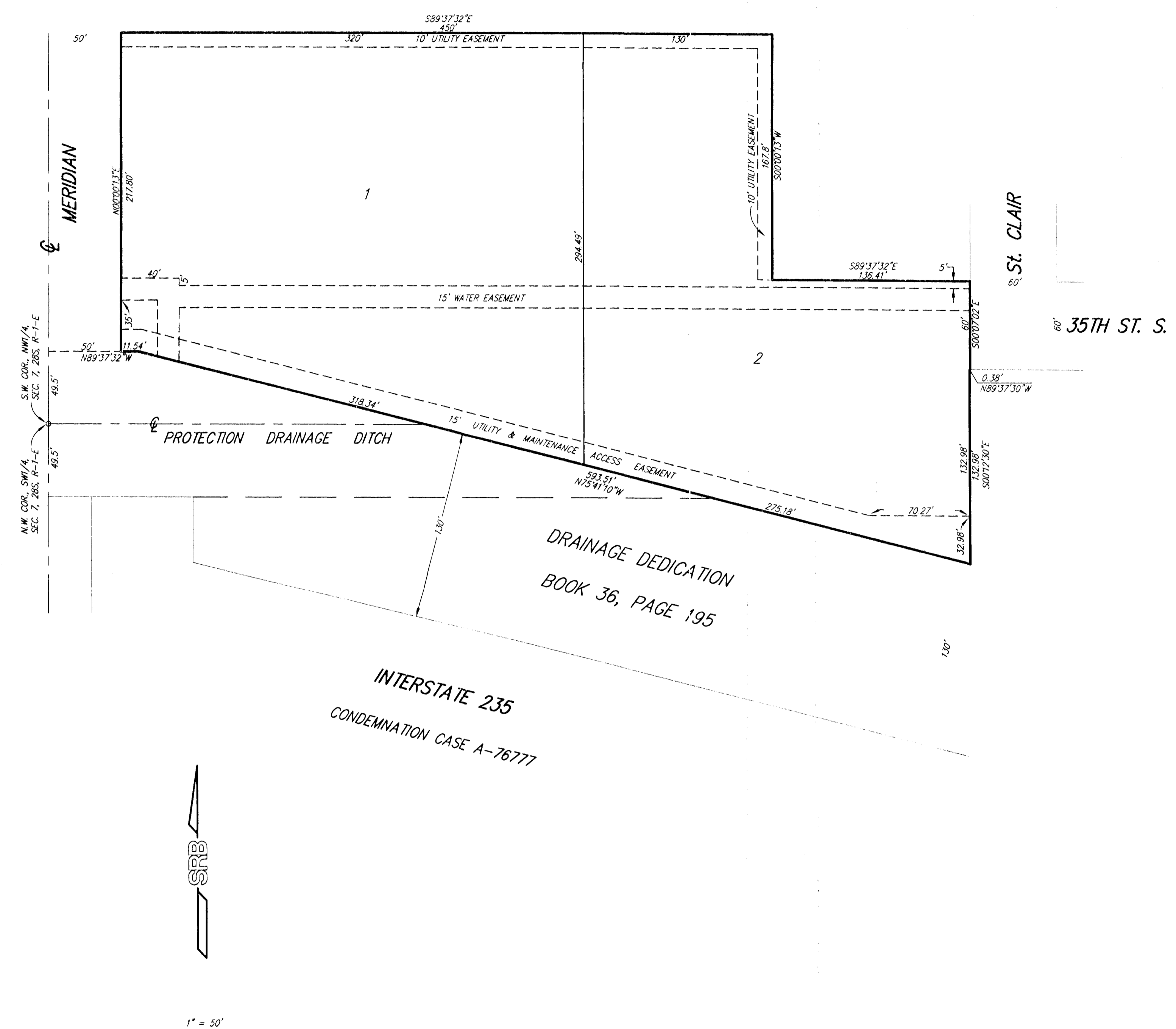


# SCHRAFT 5TH ADDITION

WICHITA, SEDGWICK COUNTY, KANSAS



Bench Mark: Chiseled Square  
at N.E. Corner of R.C.B.C. at S.W.  
Corner of 35th St. So. & Meridian  
Elevation = 1283.71 M.S.L.  
Minimum Pad Elevation  
1282.85 Mean Sea Level

State of Kansas) SS  
Sedgwick County)

We, Savoy, Ruggles & Bohm, P.A., Surveyors in aforesaid county and state do hereby certify that, under the supervision of the undersigned, we have surveyed and platted "SCHRAFT 5TH ADDITION", Wichita, Sedgwick County, Kansas and that the accompanying plat is a true and correct exhibit of the property surveyed, described as and being a replat of:

Lot 1, Joseph E. Hall Addition, Wichita, Kansas, together with all of the 50 feet of street right-of-way for 35th St. S., lying south of and adjacent to said Lot 1 and Lots 6 and 7, Hatcher-Gomez Addition to Wichita, Kansas, together with all of the 50 feet of street right-of-way, lying south of said Lots 6, 7 and Lot 8, in said Hatcher-Gomez Addition, Wichita, Kansas and together with the south 49.5 feet of the NW1/4 of Sec. 7, Twp. 28-S, R-1-E of the 6th P.M., Sedgwick County, Kansas, lying west of the west line of Lot 1, Schraft 3rd Addition, Wichita, Kansas and together with that part of the SW1/4 of Sec. 7, Twp. 28-S, R-1-E of the 6th P.M., Sedgwick County, Kansas, lying north of a line 130 feet north of and parallel with the north right-of-way line of I-235 Highway as condemned in Case A-76777 and lying west of the west line of Lot 1, Schraft 3rd Addition, Wichita, Kansas.

All Public easements and dedications being vacated by virtue of K.S.A. 12-512(b).

Savoy, Ruggles & Bohm, P.A.

Date \_\_\_\_\_  
\_\_\_\_\_  
Mark A. Savoy RLS #788  
Surveyor

Know all men by these presents that we, the undersigned, have caused the land described in the surveyors certificate to be platted into a Lots to be known as "SCHRAFT 5TH ADDITION", Wichita, Sedgwick County, Kansas. The utility easements are hereby granted as indicated for the construction and maintenance of all public utilities. A drainage plan has been developed for this plat and all drainage easements, rights-of-way, or reserves shall remain at established grades, or as modified with the approval of the City Engineer, and unobstructed to allow for the conveyance of stormwater. The Minimum Pad Elevation for lowest opening is as shown on the face of the plat.

Schraft Corp.

\_\_\_\_\_  
William G. Schraft  
President

State of Kansas) SS  
Sedgwick County)

The foregoing instrument acknowledged before me, this \_\_\_\_\_ day of \_\_\_\_\_ 2000 by William G. Schraft, President of Schraft Corp. on behalf of the Corporation.

\_\_\_\_\_  
Notary Public  
My App't. Exp \_\_\_\_\_

This plat of "SCHRAFT 5TH ADDITION", Wichita, Sedgwick County, Kansas, has been submitted to and approved by the Wichita-Sedgwick County Metropolitan Area Planning Commission, Wichita, Kansas. Dated this \_\_\_\_\_ day of \_\_\_\_\_, 2000.

Wichita-Sedgwick County Metropolitan Area Planning Commission

\_\_\_\_\_  
Francis S. Garafalo  
Chairman  
\_\_\_\_\_  
Marvin S. Krout  
Secretary

Reviewed in accordance with K.S.A. 58-2005 on this \_\_\_\_\_ day of \_\_\_\_\_, 2000

\_\_\_\_\_  
Deputy County Surveyor  
Tricia L. Robello, LS #1246

This plat approved and all dedications shown hereon, accepted by the City Council of the City of Wichita, Kansas, this \_\_\_\_\_ day of \_\_\_\_\_, 2000.

\_\_\_\_\_  
Bob Knight  
Mayor  
\_\_\_\_\_  
Pat Burnett  
City Clerk

Entered on transfer record this \_\_\_\_\_ day of \_\_\_\_\_, 2000.

\_\_\_\_\_  
James Alford  
County Clerk

State of Kansas) SS  
Sedgwick County)

This is to certify that this plat has been filed for record in the office of the Register of Deeds, this \_\_\_\_\_ day of \_\_\_\_\_, 2000, at \_\_\_\_\_ o'clock \_\_\_\_\_ M. and is duly recorded.

\_\_\_\_\_  
Bill Meek  
Register of Deeds  
\_\_\_\_\_  
Linda Kizzire  
Deputy