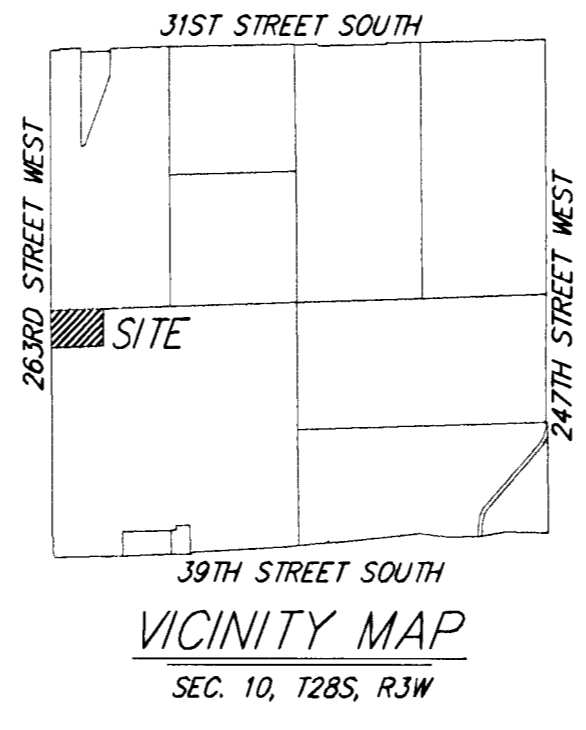
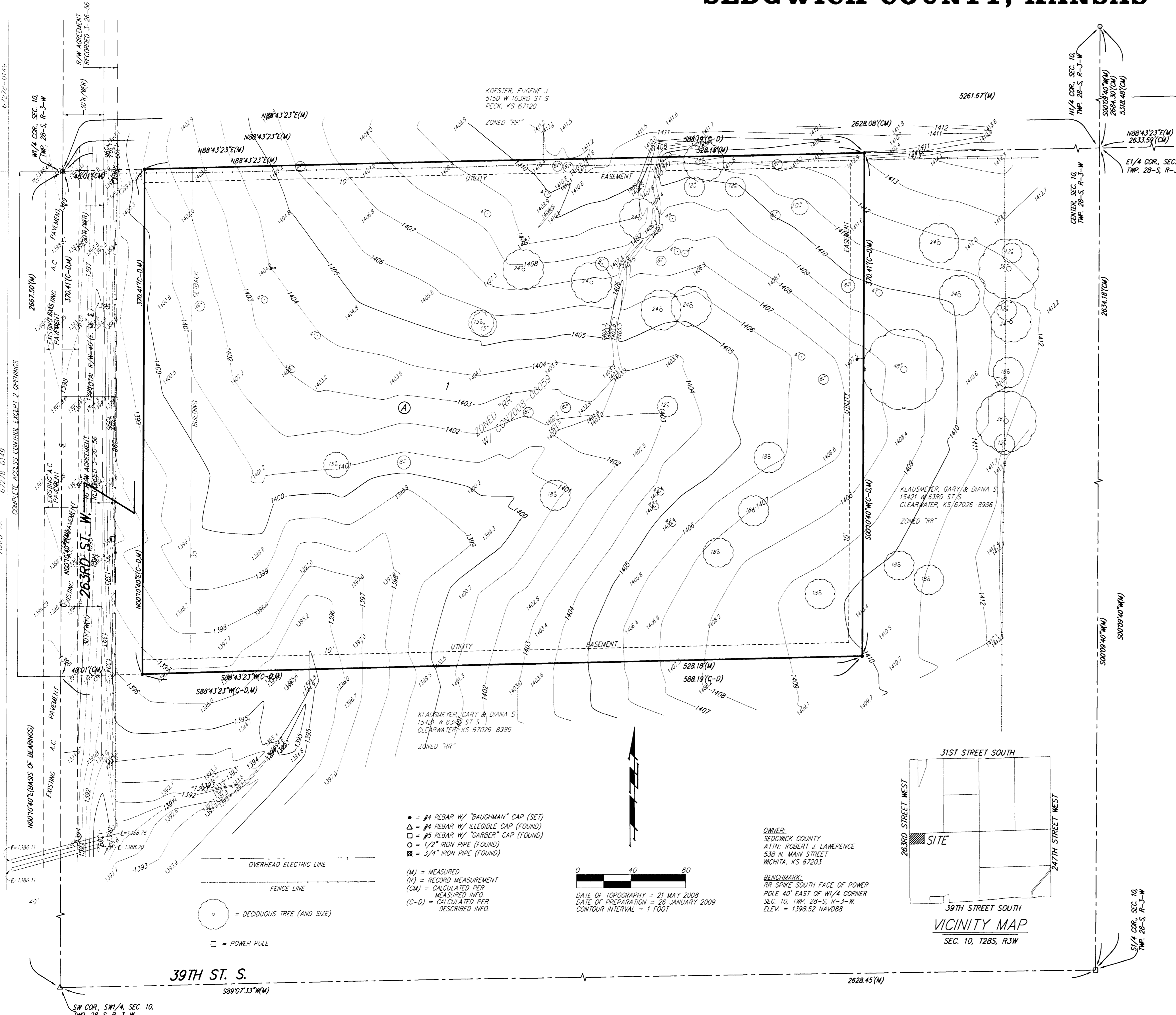


ONE-STEP FINAL PLAT

SEDGWICK COUNTY FIRE STATION NO. 39 ADDITION

SEDGWICK COUNTY, KANSAS



- = #4 REBAR W/ "BAUGHMAN" CAP (SET)
 - △ = #4 REBAR W/ ILLEGIBLE CAP (FOUND)
 - = #5 REBAR W/ "CARBER" CAP (FOUND)
 - = 1/2" IRON PIPE (FOUND)
 - ⊗ = 3/4" IRON PIPE (FOUND)
- (M) = MEASURED
 (R) = RECORD MEASUREMENT
 (CM) = CALCULATED PER MEASURED INFO
 (C-D) = CALCULATED PER DESCRIBED INFO
- OWNER:
 SEDGWICK COUNTY
 ATTN: ROBERT J. LAWRENCE
 538 W. MAIN STREET
 WICHITA, KS 67203
- BENCHMARK:
 RR SLOPE SOUTH FACE OF POWER
 POLE 40' EAST OF 1/4 CORNER
 SEC. 10, TWP. 28-S, R-3-W
 ELEV. = 1398.52 NAVD88
- DATE OF TOPOGRAPHY = 21 MAY 2008
 DATE OF PREPARATION = 26 JANUARY 2009
 CONTOUR INTERVAL = 1 FOOT

State of Kansas) SS
 Sedgwick County) We, Baughman Company, P.A., Surveyors in
 atforesaid county and state do hereby certify that we have surveyed and
 plotted "SEDGWICK COUNTY FIRE STATION NO. 39 ADDITION", Sedgwick
 County, Kansas and that the accompanying plat is a true and correct
 exhibit of the property surveyed, described as the west 588.00 feet of the
 north 370.29 feet of the SW 1/4 of Sec. 10, Twp. 28-S, R-3-W of the 6th
 P.M., Sedgwick County, Kansas, subject to road rights-of-way of record.

Existing public easements and dedications
 being vacated by virtue of K.S.A. 12-512(b).

Baughman Company, P.A.

Michael G. Conroy, Surveyor

Know all men by these presents that we,
 the undersigned, have caused the land in the surveyors certificate to be
 platted into a Lot, a Block, and Street, to be known as "SEDGWICK
 COUNTY FIRE STATION NO. 39 ADDITION", Sedgwick County, Kansas. The
 utility easements are hereby granted as indicated for the construction and
 maintenance of all public utilities. Access controls shall be as depicted
 on the face of the plat and are hereby granted to the appropriate
 governing body. The permitted opening locations shall be as determined
 by the City Engineer of the City of Wichita, Kansas.

Sedgwick County, Kansas

Chairman of the
 Board of County
 Commissioners

Kelly Parks

ATTEST: Kelly B. Arnold, County Clerk

State of Kansas) SS
 Sedgwick County) The foregoing instrument acknowledged before
 me, this day of 2009, by Kelly Parks, Chairman of the
 Board of County Commissioners, on behalf of Sedgwick County.

Notary Public

My App't. Exp. _____

This plat of "SEDGWICK COUNTY FIRE STATION
 NO. 39 ADDITION", Sedgwick County, Kansas has been submitted to and
 approved by the Wichita-Sedgwick County Metropolitan Area Planning
 Commission, Wichita, Kansas.
 Dated this _____ day of _____, 2009.
 Wichita-Sedgwick County Metropolitan Area Planning Commission

Darrell Downing, Chair

John L. Schlegel, Secretary

This plat approved and all dedications
 shown hereon accepted by the Board of Commissioners of
 Sedgwick County, Kansas, this _____ day of _____, 2009.

Kelly Parks, Chairman

ATTEST: Kelly B. Arnold, County Clerk

Reviewed in accordance with K.S.A. 58-2005
 on this _____ day of _____, 2009.

Tricia L. Robello, L.S. #1246
 Deputy County Surveyor
 Sedgwick County, Kansas

Entered on transfer record this _____ day
 of _____, 2009.

Kelly B. Arnold, County Clerk

State of Kansas) SS This is to certify that this plat has been
 filed for record in the office of the Register of Deeds, this _____ day
 of _____, 2009 at _____ o'clock _____ M., and is duly recorded.

Bill Meek, Register of Deeds

Tonya Buckingham, Deputy

**SEDGWICK COUNTY FIRE
 STATION NO. 39 ADDITION**
 20 JANUARY 2009

Baughman Company, P.A.
 315 Ellis St. Wichita, KS 67211 P 316-262-7271 F 316-262-0149
 ENGINEERING | SURVEYING | PLANNING | LANDSCAPE ARCHITECTURE
 E:\PLAT\SEDGWICKCOUNTYFIRESTATION39\FIRESTA39\FW38KR

NOTE:
 A drainage plan has been developed for this submission and is on file with
 the appropriate governing body. Drainage intent shall remain as depicted or
 as modified with the approval of the City Engineer of the appropriate
 governing body. No obstructions which impede the flow of this drainage plan
 shall be allowed.