

SEDGWICK COUNTY FIRE STATION NO. 39 ADDITION

SEDGWICK COUNTY, KANSAS

State of Kansas) SS We, **Baughman Company, P.A.**, Surveyors in
Sedgwick County) do hereby certify that we have surveyed and
platted "SEDGWICK COUNTY FIRE STATION NO. 39 ADDITION", Sedgwick
County, Kansas and that the accompanying plat is a true and correct
exhibit of the property surveyed, described as the west 588.00 feet of
the north 370.29 feet of the SW1/4 of Sec. 10, Twp. 28-S, R-3-W of
the 8th P.M., Sedgwick County, Kansas, subject to road rights-of-way
of record.
Existing public easements and dedications
being vacated by virtue of K.S.A. 12-512(b).
Baughman Company, P.A.

This plat of "SEDGWICK COUNTY FIRE STATION
NO. 39 ADDITION", Sedgwick County, Kansas has been submitted to and
approved by the Wichita-Sedgwick County Metropolitan Area Planning
Commission, Wichita, Kansas.
Dated this _____ day of _____, 2009.
Wichita-Sedgwick County Metropolitan Area Planning Commission

_____, Chair
Darrell Downing
_____, Secretary
John L. Schlegel

_____, Surveyor
Michael G. Conroy

This plat approved and all dedications
shown hereon accepted by the Board of Commissioners of
Sedgwick County, Kansas, this _____ day of _____, 2009.

_____, Chairman
Kelly Parks
ATTEST: _____, County Clerk
Kelly B. Arnold

Know all men by these presents that we,
the undersigned, have caused the land in the surveyors certificate to be
platted into a Lot, a Block, and a Street, to be known as "SEDGWICK
COUNTY FIRE STATION NO. 39 ADDITION", Sedgwick County, Kansas. The
utility easements are hereby granted as indicated for the construction and
maintenance of all public utilities. Access controls shall be as depicted
on the face of the plat and are hereby granted to the appropriate
governing body. The permitted opening locations shall be as determined
by the Engineer for the appropriate governing body.
Sedgwick County Fire District #1

_____, Chairman
Kelly Parks

Reviewed in accordance with K.S.A. 58-2005
on this _____ day of _____, 2009.

State of Kansas) SS The foregoing instrument acknowledged
Sedgwick County) before me, this _____ day of _____, 2009, by **Kelly Parks**,
Chairman of Sedgwick County Fire District #1, on behalf of Sedgwick
County Fire District #1.

_____, Notary Public

My App't. Exp. _____

Tricia L. Robello, L.S. #1246
Deputy County Surveyor
Sedgwick County, Kansas

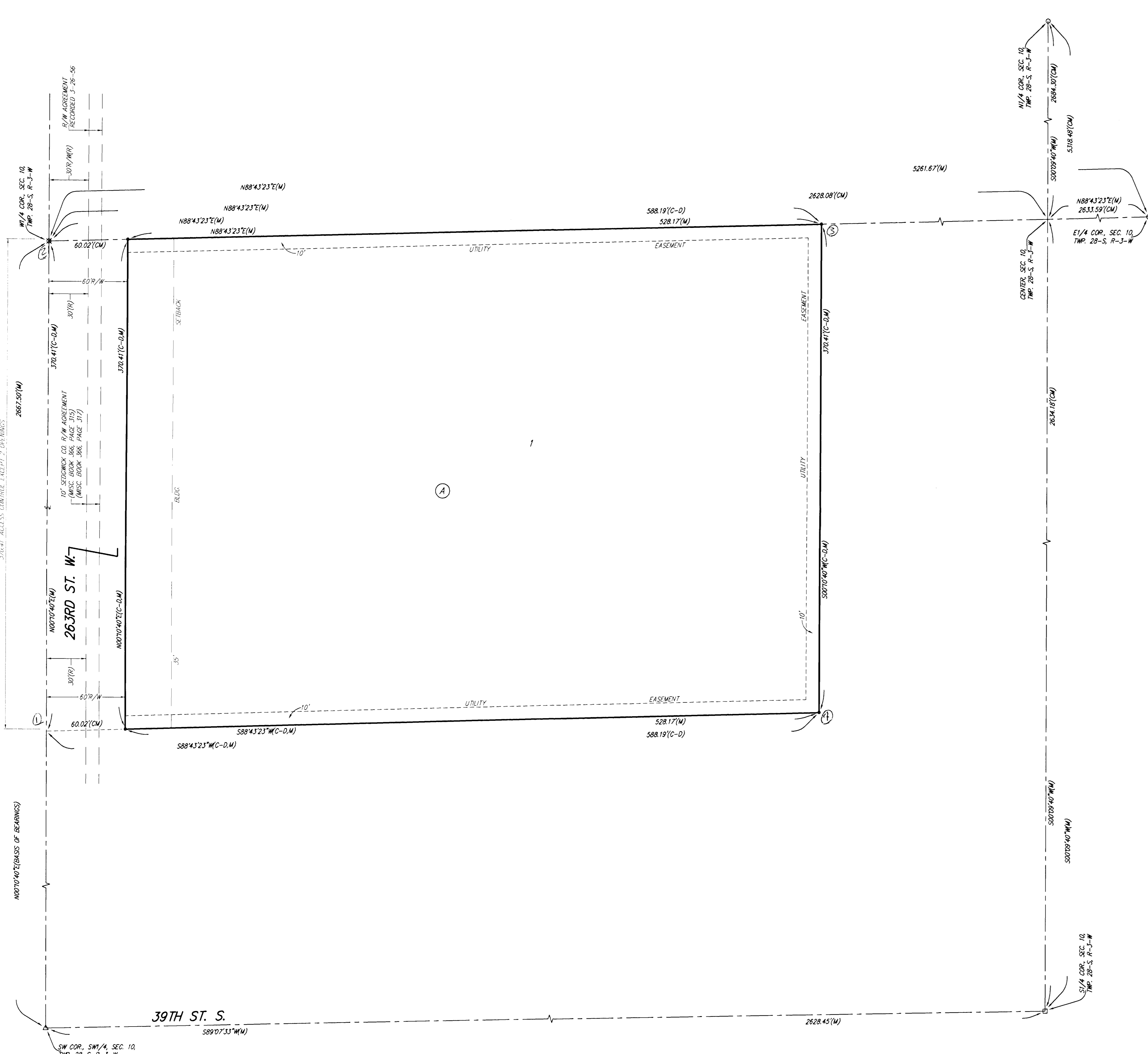
Entered on transfer record this _____ day
of _____, 2009.

_____, County Clerk
Kelly B. Arnold

State of Kansas) SS This is to certify that this plat has been
Sedgwick County) filed for record in the office of the Register of Deeds, this _____ day
of _____, 2009 at _____ o'clock _____ M., and is duly recorded.

_____, Register of Deeds
Bill Meek

_____, Deputy
Tonya Buckingham



- = #4 REBAR W/ "BAUGHMAN" CAP (SET)
- △ = #4 REBAR W/ ALLEGIBLE CAP (FOUND)
- = #5 REBAR W/ "GARBER" CAP (FOUND)
- = 1/2" IRON PIPE (FOUND)
- ⊗ = 3/4" IRON PIPE (FOUND)

- (M) = MEASURED
- (R) = RECORD MEASUREMENT
- (CM) = CALCULATED PER MEASURED INFO
- (C-D) = CALCULATED PER DESCRIBED INFO

NOTE:
EXISTING BLANKET PHILLIPS PIPE LINE COMPANY
RIGHT-OF-WAY CONTRACT, (LAST ASSIGNED TO
KANSAS PIPELINE PARTNERSHIP), OVER THE
SW1/4 OF SEC. 10, TWP. 28-S, R-3-W
RECORDED IN MISC. BOOK 98, PAGE 144.

Baughman Company, P.A.
315 Ella St. Wichita, KS 67211 P 316-262-7271 F 316-262-0149
ENGINEERING | SURVEYING | PLANNING | LANDSCAPE ARCHITECTURE
EXPLAT: SEDGWICK COUNTY FIRE STATION 39 ADDITION (FIRE STATION 39) DWG: MCCC