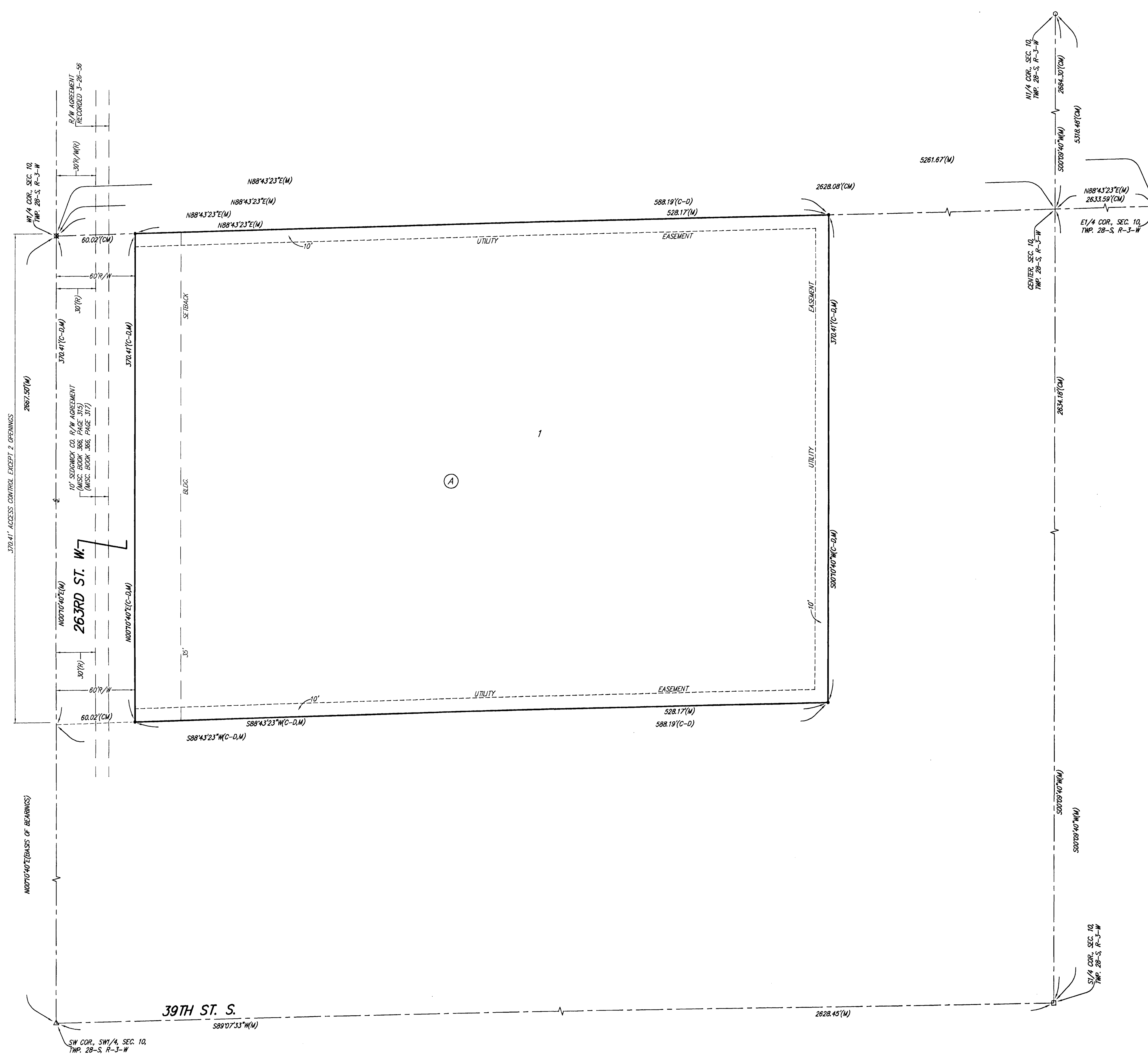


# SEDGWICK COUNTY FIRE STATION NO. 39 ADDITION

## SEDGWICK COUNTY, KANSAS

FINAL TRACING REC'D

6-18-09



State of Kansas) SS We, Baughman Company, P.A., Surveyors in Sedgwick County do hereby certify that we have surveyed and platted "SEDGWICK COUNTY FIRE STATION NO. 39 ADDITION", Sedgwick County, Kansas and that the accompanying plat is a true and correct exhibit of the property surveyed, described as the west 588.00 feet of the north 370.29 feet of the SW 1/4 of Sec. 10, Twp. 28-S, R-3-W of the 6th P.M., Sedgwick County, Kansas, subject to road rights-of-way of record.

Existing public easements and dedications being vacated by virtue of K.S.A. 12-512(b).  
Baughman Company, P.A.

Michael G. Conroy, Surveyor

This plat of "SEDGWICK COUNTY FIRE STATION NO. 39 ADDITION", Sedgwick County, Kansas has been submitted to and approved by the Wichita-Sedgwick County Metropolitan Area Planning Commission, Wichita, Kansas.  
Dated this \_\_\_\_\_ day of \_\_\_\_\_, 2009.  
Wichita-Sedgwick County Metropolitan Area Planning Commission

\_\_\_\_\_, Chair  
Darrell Downing

\_\_\_\_\_, Secretary  
John L. Schlegel

Know all men by these presents that we, the undersigned, have caused the land in the surveyors certificate to be platted into a Lot, a Block, and a Street, to be known as "SEDGWICK COUNTY FIRE STATION NO. 39 ADDITION", Sedgwick County, Kansas. The utility easements are hereby granted as indicated for the construction and maintenance of all public utilities. Access controls shall be as depicted on the face of the plat and are hereby granted to the appropriate governing body. The permitted opening locations shall be as determined by the Engineer for the appropriate governing body.

Sedgwick County Fire District #1  
  
 Kelly Parks, Chairman

KATIE ASBURY

State of Kansas) SS The foregoing instrument acknowledged before me, this \_\_\_\_\_ day of \_\_\_\_\_, 2009, by Kelly Parks, Chairman of Sedgwick County Fire District #1, on behalf of Sedgwick County Fire District #1.

KATIE ASBURY, Notary Public  
 My App't. Exp. 4/13/13

This plat approved and all dedications shown hereon accepted by the Board of Commissioners of Sedgwick County, Kansas, this \_\_\_\_\_ day of \_\_\_\_\_, 2009.

\_\_\_\_\_, Chairman  
Kelly Parks

ATTEST: \_\_\_\_\_, County Clerk  
Kelly B. Arnold

Reviewed in accordance with K.S.A. 58-2005 on this \_\_\_\_\_ day of \_\_\_\_\_, 2009.

Tricia L. Rabella, L.S. #1246  
Deputy County Surveyor  
Sedgwick County, Kansas

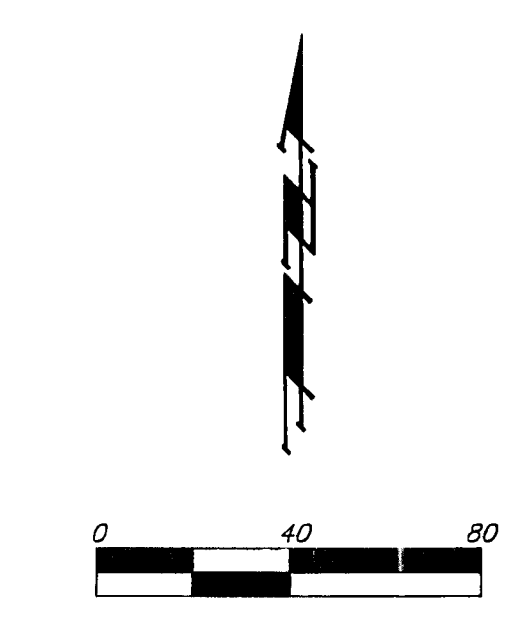
Entered on transfer record this \_\_\_\_\_ day of \_\_\_\_\_, 2009.

\_\_\_\_\_, County Clerk  
Kelly B. Arnold

State of Kansas) SS This is to certify that this plat has been filed for record in the office of the Register of Deeds, this \_\_\_\_\_ day of \_\_\_\_\_, 2009 at \_\_\_\_\_ o'clock \_\_\_\_\_ M. and is duly recorded.

\_\_\_\_\_, Register of Deeds  
Bill Meek

\_\_\_\_\_, Deputy  
Tonya Buckingham



- = #4 REBAR W/ "BAUGHMAN" CAP (SET)
- △ = #4 REBAR W/ ILLEGIBLE CAP (FOUND)
- = #5 REBAR W/ "SARBERT" CAP (FOUND)
- = 1/2" IRON PIPE (FOUND)
- ⊗ = 3/4" IRON PIPE (FOUND)

- (M) = MEASURED
- (R) = RECORD MEASUREMENT
- (CM) = CALCULATED PER MEASURED INFO.
- (C-D) = CALCULATED PER DESCRIBED INFO.

NOTE: A drainage plan has been developed for this subdivision and is on file with the appropriate governing body. Drainage intent shall remain as depicted or as modified with the approval of the Engineer for the appropriate governing body. No obstructions which impede the flow of this drainage plan shall be allowed.

NOTE: EXISTING BLANKET PHILLIPS PIPE LINE COMPANY RIGHT-OF-WAY CONTRACT, (LAST ASSIGNED TO KANSAS PIPELINE PARTNERSHIP), OVER THE SW 1/4 OF SEC. 10, TWP. 28-S, R-3-W, RECORDED IN MISC. BOOK 98, PAGE 144.

**Baughman Company, P.A.**  
 315 Ellis St. Wichita, KS 67211 P 316-262-7271 F 316-262-0149  
 ENGINEERING | SURVEYING | PLANNING | LANDSCAPE ARCHITECTURE  
F:\PLAT\SEDGWICK COUNTY FIRE STA 39.DWG\LIRE STA 39.F.DWG\MCC